

"筌筌" 注塑机

TSUENSAINT SERIES INJECTION MOLDING MACHINE



"筌筌" 压铸机

TSUENSAINT SERIES DIE-CASTING MACHINE



NINGBO TSUENSAINT TECHNOLOGY DEVELOPMENT CO.,LTD.
宁波筌筌科技发展有限公司

Add: Building 4, No.128, Jingyuan Road, High Tech Zone, Ningbo, Zhejiang.
地址: 浙江省宁波高新区晶源路128号4号楼

Mob: 0086-15658273134 0086-13967807575

Email: michelle@tsuensaint.com info@tsuensaint.com

大型冲压自动化方案解决专家

LARGE POWER PRESS
AUTOMATION SOLUTIONS EXPERTS

NINGBO TSUENSAINT TECHNOLOGY DEVELOPMENT CO., 宁波筌筌科技发展有限公司

TSUEN SAINT 荃笙
HIGH PRECISION POWER PRESS



宁波荃笙科技发展有限公司，专心致力于高精冲压机床设备的集研发、设计、生产、销售和服务，主营产品包含各类开式、闭式单/双点机械式、伺服冲床和高速冲床近20个系列，涵盖了从25吨到2500吨等30多种规格的机型。产品广泛应用于新能源、家电制造、仪器仪表、汽车配件、电机制造、电器制造、医疗器械、五金等金属制品加工领域。凭借公司二十多年的专业制造高精冲压机床技术经验及创新能力，公司科研技术团队能够为用户提供个性化工程设计和冲压集成解决的专业方案与服务。

NINGBO TSUENSAINT TECHNOLOGY DEVELOPMENT CO.,LTD. is dedicated to the R&D, design, manufacture, sales and service of high-precision presses. The products cover mechanical and servo presses with gap frame, C-frame, single/double points structure and high-speed presses, nearly 20 series, more than 30 types of models with capacity from 25 tons to 2,500 tons. Products are widely used in new energy, home appliance manufacturing, instrumentation, auto parts, motor manufacturing, electrical manufacturing, medical equipment, hardware and other metal processing fields. Relying on the professional experience of more than 20 years in metal stamping and innovation capabilities, our technical teams are able to provide customers with professional solutions and services for personalized engineering design and stamping integration solutions.

APC SERIES

Double Crank Precision Press Machin

双曲轴精密冲床



- 机身采用优质钢板焊制，经过消除应力工艺处理。提高了整机精度的稳定性和可靠性能。
- The machine body is welded of quality steel sheet and treated by tension elimination, improve stability and reliability of precision of the machine.

Standard Unit 标准装置

- High performance dry clutch & brake
- Standard operating system of aomate: electronic crank angle led display, electronic speed led display
- Operation mode selection: off/inching/safety one stroke/continuous
- Hydraulic overload protector
- Main motor (adjustable)
- Overrun detector
- Portable 2-hand push
- Dual solenoid valve
- Automatic slide adjust devicet
- Digital die height indicator (unit 0.1Mm)
- Manual lubrication system
- Total counter, 6 digits
- Preset counter, 6 digits
- Maintenance counter, 6 digits
- Life counter, 6 digits
- Electronic rotary cam switch (6 spare channel)
- Air ejector 1/2 inch one channel)
- Air source receptacle 1/2 inch two channel
- Missfeed detection circuit
- Power supply socket

- 干式离合刹车器
- 澳玛特标准操作系统：电子式曲轴角度指示器、电子式运转速度指示器
- 运转模式选择：/切/寸动/安全一行程/连续
- 油压过负荷保护装置
- 主电机(可调速)
- 二度落保护装置
- T型双手按钮操作台
- 双联电磁阀
- 电动滑块调整装置
- 数字式模高指示器(单位0.1mm)
- 手动黄油润滑装置
- 累计计数器6位数
- 预调计数器6位数
- 保养计数器6位数
- 寿命计数器6位数
- 电子式旋转凸轮开关预备6连
- 喷风装置1/2"一回路
- 空气源接头1/2"二回路
- 误送检知插座
- 电源插座

选购项目

Optional

110-315T

- Die cushion
- Electrical automatic lubrication system
- Safety light curtain
- Slide knock-out device
- Main motor reversing circuit
- Foot switch
- Safety die block with plug
- Dual solenoid valve with Inverter
- Missfeed detector
- Flywheel brake
- Quick mold replace mechanism
- Quick die change system
- Upper die clamber
- Die lifter
- Die arm
- Automatic feed equipment
- NC straightener feed c / wuncoiler (3 in 1)
- NC roller feeder
- Staightener c/w uncoiler (2 in 1)
- Staightene

- 模垫装置
- 电动式黄油润滑装置
- 光电安全装置
- 滑块上部顶料装置
- 主马达逆转装置
- 脚踏开关
- 安全挡块及安全插销
- 附检知变联电磁阀
- 误送检知装置
- 飞轮刹车装置
- 防震机械脚
- 快速换模装置
- 上夹模器
- 下夹模器
- 举模器
- 移模臂
- 自动送料装置
- 三合一NC矫直送料机
- NC滚轮送料机
- 二合一料架兼矫直机
- 矫直机(整平机)

In order to guarantee the machine running in stable and smooth, adopts the design of symmetrical two slid boards with balancer.

The precision of mold adjusting up to 0.1mm, safety, reliable and convenient.

Crank, gear, connect bar are oxidized hardening and milled, having super comprehensive mechanical performance and durable function.

Reasonable structural design, is convenient for automatic production and line

Used reliable high intensity clutch/brake and twin electromagnetic valve, overloading protector can guarantee safe production all-around.

Used high-grade alloy steel, double crank, wide work center with connection bar structure, the optimized design is suitable for large sizes and the mold bearing large impact loading as wzell as pressing of eccentric mold.

Adopted closed electric loop circuit, have compatible with any automatic equipments.

为保证机器运转的相对平稳性，采用对称两支滑块、平衡器装置设计方式。

调模精度高达0.1mm，安全、便捷、可靠。

曲轴、齿轮、连杆等部件，经硬氧化和研磨等，工艺处理后，只有极高的综合机械性能和耐用性。

机器结构设计合理，便于实现自动化生产和流水生产机构的组合。

采用高强度可靠的离合器/刹车装置和双联电磁阀，过载保护装置，确保生产操作安全最大化程度。

本机采用高档合金钢、双曲轴、2工位宽中心，距连杆支撑结构，优化设计，极大适合14.周密闭电气回路设计，可搭配任何的自动化设备。

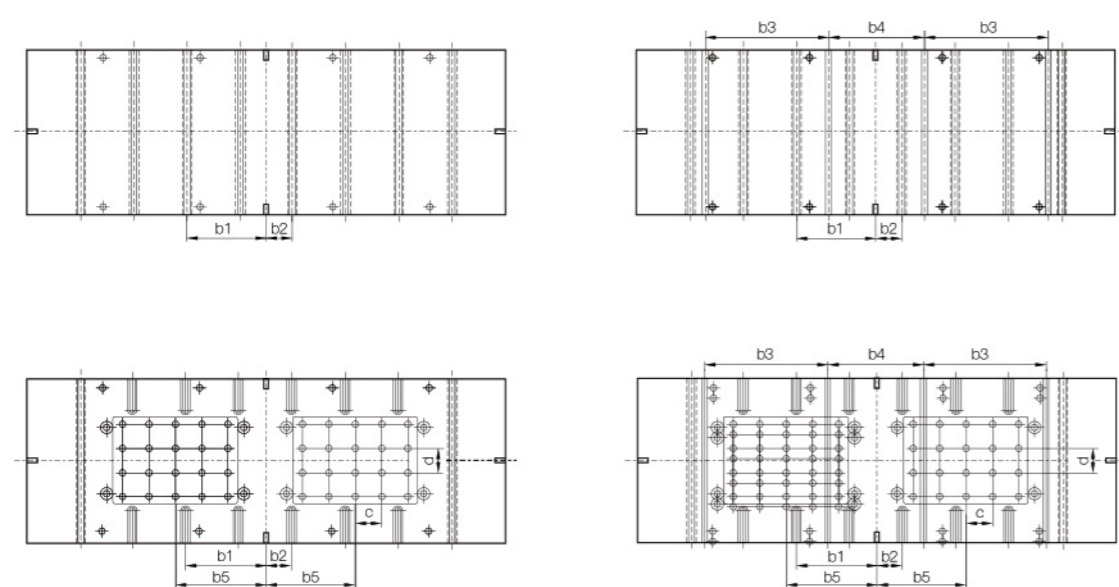
用密闭电气回路设计，可搭配任何的自动化设备。

规格		单位	APC-110		APC-160		APC-200		APC-250		APC-315	
型式	Model		V	H	V	H	V	H	V	H	V	H
吨数	Capacity	Ton	110		160		200		250		315	
冲压发生位置	Rated tonnage point	mm	5	3	6	3	6	3	7	3.5	7	3
每分钟行程数	Stable speed	s.p.m	35-65	50-100	30-55	40-85	25-45	35-70	20-35	30-60	20-35	30-50
行程	Stroke	mm	180	110	200	130	250	150	280	170	300	170
最大闭合工作高度	Die height	mm	400	435	450	485	500	550	550	605	550	450
滑块调整量	Slide adjustment	mm	100		100		120		120		120	
下工作台尺寸	Bolster area	mm	1800×650×130		2000×760×150		2400×840×170		2700×900×170		2800×950×190	
上工作台尺寸	Slide area	mm	1400×500×70		1600×550×70		1850×650×95		2100×700×95		2100×700×95	
主马达	Main motor	Kw×P	11×4		15×4		18.5×4		22×4		30×4	
使用空气压力	Air pressure	kg/cm ²	6		6		6		6		6	
冲床精度	Presses precision		GB/JIS 1class 一级									
冲床(长×宽×高)	Presses dimension	mm	2000×2285×3110		2220×2500×3760		2520×2800×3914		2820×3260×4355		3000×3190×4840	
模垫顶板面积	Die cushion work part dimension	mm ²	350×235×2组		410×260×2组		540×350×2组		640×470×2组		640×470×2组	

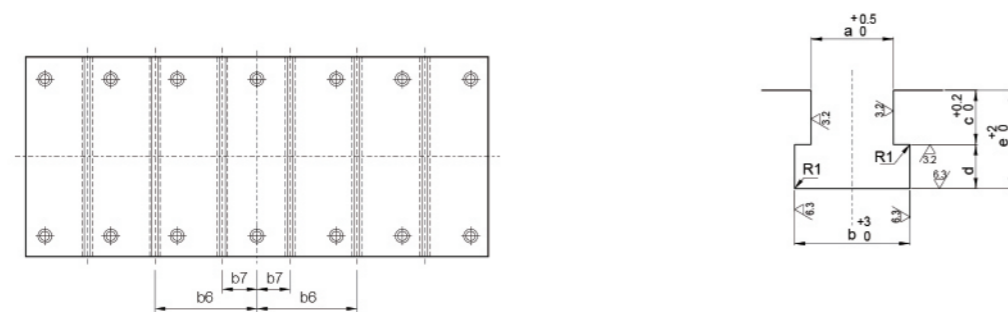
► Specification 规格参数

规格	APC-110	APC-160	APC-200	APC-250	APC-315
工作台面积 (左右×前后)	1800×650	2000×760	2400×840	2700×900	2800×950
T型槽型番	A	A	B	B	B
T型槽条数	6	8	8	8	8
b1	375	375	375	450	450
b2	125	125	125	150	150
b3	320	520	710	680	680
b4	430	520	520	540	540
b5	255	415	455	510	510
图形二、四 模垫销孔数目×孔径	∅8× ^{+0.5} / _{+0.1}	∅8× ^{+0.5} / _{+0.1}	∅8× ^{+0.5} / _{+0.1}	70×∅8 ^{+0.5} / _{+0.1}	∅8× ^{+0.5} / _{+0.1}
销孔距离c×d	75×100	75×75	100×100	100×100	100×100

► Table 工作台



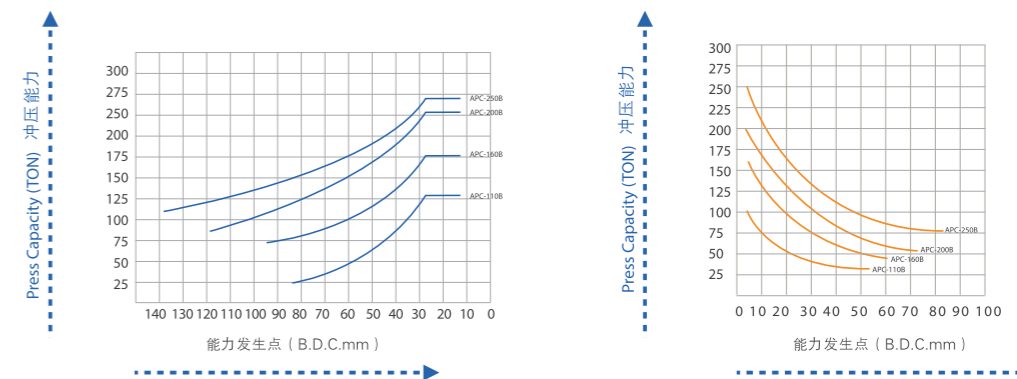
► Slide Bolster 上工作台



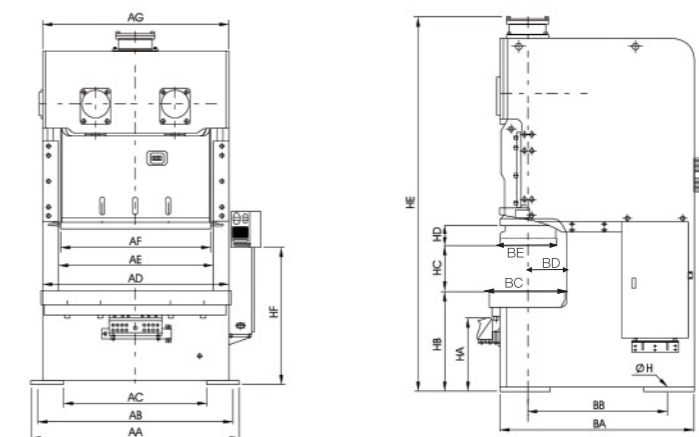
规格	APC-110	APC-160	APC-200	APC-250	APC-315
滑块板面积 (左右×前后) Slide Plate Area(LR×FB)	1400×500	1600×550	1850×650	2100×700	2100×700
T沟型类型	A	A	B	B	B
T沟条数	4	6	6	6	6
b6	375	375	375	450	450
b7	125	125	125	150	150

MODEL	A	B
a	22	28
b	37	48
c	24	28
d	16	20
R	1	1

► Graph 能力曲线图



► Dimensions 外形尺寸



规格 Specification	APC-110		APC-160		APC-200		APC-250		APC-315	
型式 Model	V	H	V	H	V	H	V	H	V	H
AA	2000	2200	2620	3000	3100					
AB	1900	2080	2460	2800	2800					
AC	1360	1520	1820	2200	2200					
AD	1800	2000	2400	2700	2800					
AE	1510	1660	1990	2230	2220					
AF	1400	1600	1850	2100	2100					
AG	1780	1980	2320	2590	2640					
BA	1720	1940	2235	2545	2720					
BB	1270	1380	1675	1975	2170					
BC	650	760	840	900	950					
BD	330	385	425	455	480					
BE	500	550	650	700	700					
HA	(695)	(835)	(895)	(925)	(890)					
HB	830	830	990	990	1070	1070	1100	1100	1205	1205
HC	400	435	450	485	500	550	550	605	550	450
HD	180	110	200	130	250	150	280	170	300	170
HE	3110	3760	3914	4355	4840					
HF	1370	1405	1630	1430	1445					
∅h	∅35	∅45	∅47	∅47	∅52					