

"筌筌" 注塑机

TSUENSAINT SERIES INJECTION MOLDING MACHINE



"筌筌" 压铸机

TSUENSAINT SERIES DIE-CASTING MACHINE



NINGBO TSUENSAINT TECHNOLOGY DEVELOPMENT CO.,LTD.

宁波筌筌科技发展有限公司

Add: Building 4, No.128, Jingyuan Road, High Tech Zone, Ningbo, Zhejiang.

地址: 浙江省宁波高新区晶源路128号4号楼

Mob: 0086-15658273134 0086-13967807575

Email: michelle@tsuensaint.com info@tsuensaint.com



大型冲压自动化方案解决专家

LARGE POWER PRESS

AUTOMATION SOLUTIONS EXPERTS

NINGBO TSUENSAINT TECHNOLOGY DEVELOPMENT CO., 宁波筌筌科技发展有限公司



# TSUEN SAINT 荃笙

## HIGH PRECISION POWER PRESS



宁波荃笙科技发展有限公司，专心致力于高精冲压机床设备的集研发、设计、生产、销售和服务，主营产品包含各类开式、闭式单/双点机械式、伺服冲床和高速冲床近20个系列，涵盖了从25吨到2500吨等30多种规格的机型。产品广泛应用于新能源、家电制造、仪器仪表、汽车配件、电机制造、电器制造、医疗器械、五金等金属制品加工领域。凭借公司二十多年的专业制造高精冲压机床技术经验及创新能力，公司科研技术团队能够为用户提供个性化工程设计和冲压集成解决的专业方案与服务。

NINGBO TSUENSAINT TECHNOLOGY DEVELOPMENT CO.,LTD. is dedicated to the R&D, design, manufacture, sales and service of high-precision presses. The products cover mechanical and servo presses with gap frame, C-frame, single/double points structure and high-speed presses, nearly 20 series, more than 30 types of models with capacity from 25 tons to 2,500 tons. Products are widely used in new energy, home appliance manufacturing, instrumentation, auto parts, motor manufacturing, electrical manufacturing, medical equipment, hardware and other metal processing fields. Relying on the professional experience of more than 20 years in metal stamping and innovation capabilities, our technical teams are able to provide customers with professional solutions and services for personalized engineering design and stamping integration solutions.



APD SERIES

Semi-Closed Precision Press Machine

半闭式精密冲床

- 滑块平衡装置与滑块在同一中心，使机器平衡运转的同时，滑块自身的受力均匀，达到运动精度更加稳定。
- The slid board and slid board balancer at same center, the slid board is borne force evenly, so the precision of motion in stable.



80-315T

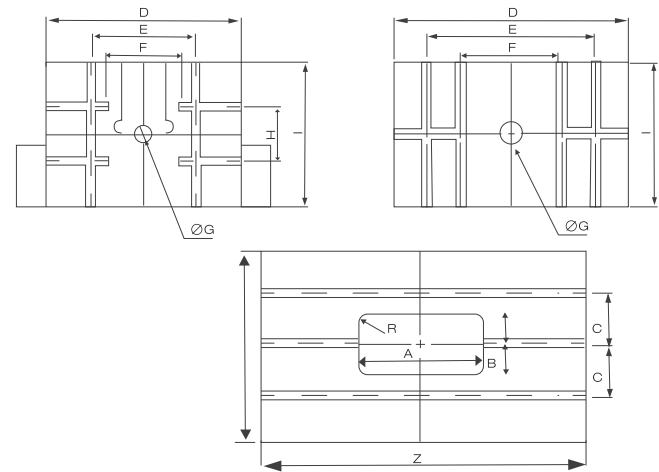
Standard Unit  
标准装置

- Hydraulic over-load protector
- Automatic slide adjust device
- Automatic die height indicator
- Balance device
- Main motor(adjustable)
- Rotary cam switch
- Crank angle indicator
- Electrical stroke counter
- Air source receptacle
- Against over-run safety device
- 油压式过载保护装置
- 电动式滑块调整装置
- 电动式模高指示器
- 滑块及模具平衡装置
- 主电机(可调速)
- 旋转凸轮开关
- 曲轴角度指示器
- 计数器
- 空气源接头
- 二度落保护装置

选购项目

Optional

- Electrical automatic lubrication system
- Pneumatic die cushion device
- Preset counter
- Preset counter
- Foot switch
- Quick die change device (Die lifter, clamp and die arm sepjes)
- Slide knock-out device
- Misfeed detection consent
- 电动式黄油润滑装置
- 气压模式装置
- 预裁计数器
- 预断计数器
- 脚踏开关
- 快速换模装置 (举模器、夹模器或移模臂)
- 滑块上部打料装置
- 误送检测装置
- Power supply
- Anti-vibration press mount
- Photo-electronic safety device
- Feeder
- Uncoiler
- Leveler
- Mechanism hand
- Die room light
- Left (right) feeding device
- 电源插座
- 防震脚
- 光电保护装置
- 送料机(空气、机械及NC各类)
- 料架
- 矫平机
- 机械手
- 模具照明装置
- 左(右)侧送料装置



MODEL	APD-80	APD-110	APD-160	APD-200	APD-260	APD-315
A	360	400	440	480	520	520
B	180	200	220	240	260	260
C	150	160	220	280	280	280
D	560	650	700	850	880	950
E	300	300	500	700	700	700
F	220	220	300	350	350	350
G	50	50	70	70	70	70
H	160	200	-	-	-	-
I	420	470	580	650	700	700
G	940	1100	1230	1420	1540	1630
K	550	600	800	820	840	700

- 机身采用优质钢板焊制，经过消除应力工艺处理。提高了整机精度的稳定性和可靠性。
- 为保证机器运转的相对平稳性，采用对称两支滑块、平衡器装置设计方式。调模精度高达0.1mm，安全、便捷、可靠。
- 曲轴、齿轮、连杆等部件，经硬氧化和研磨等，工艺处理机械性能和耐用性。
- 机器结构设计合理，便于实现自动化生产和流水生产机构的组合。
- 采用高强度可靠的离合器/刹车装车和双联电磁阀，过载保护装置，确保生产操作安全最大化程度。
- 本机采用半闭式机架结构设计，冲压精度稳定，可有效提高模具的使用寿命。
- The machine body is welded of quality steel sheet and treated by tension elimination, improve stability and reliability of precision of the machine.
- In order to guarantee the machine running in stable and smooth, adopts the design of symmetrical two slid boards with balancer.
- The precision of mold adjusting up to 0.1mm, safety, reliable and convenient.
- Crank, gear, connect bar are oxidized hardening and milled, having super comprehensive mechanical performance and durable function.
- Reasonable structural design, is convenient for automatic production and line production.
- The machine adopts semi-closed machine frame structure design, can promote the using life of mold.

规格	Specification	单位	APD-80		APD-110		APD-160		APD-200		APD-260		APD-315	
型式	Model		V	H	V	H	V	H	V	H	V	H	V	H
吨数	Capacity	Ton	80		110		160		200		260		315	
冲力发生位置	Rated tonnage point	mm	4	2	6	3	6	3	6	3	7	3.5	8	4
行程	Stroke	mm	150	70	180	80	180	110	200	130	220	150	250	180
最大闭合工作高度	Die height	mm	340	380	360	410	400	435	450	485	500	535	550	585
每分钟行程数	Stroke per minute	s.p.m	35-80	80-120	30-60	60-90	30-55	35-70	25-50	30-66	25-45	30-50	25-40	25-40
滑块调整量	Slide adjustment	mm	80		80		100		110		110		120	
上工作台尺寸	Slide area	mm	560×420×70		650×470×80		700×580		850×650		880×700		950×700	
下工作台尺寸	Bolster area	mm	940×550×90		1100×600×110		1230×800×140		1420×820×160		1540×840×180		1630×900×180	
主电动机	Main motor	kwxp	7.5×4		11×4		15×4		18.5×4		22×4		30×4	
滑块调整机构	Slide adjust device	HP	电动 clectrial driving											
使用空气压力	Air pressure	kg/cm <sup>2</sup>	6		6		6		6		6		6	
冲床(长×宽×高)	Presses dimension	mm	1400×1940×3100		1580×2080×3330		1730×2440×3550		1970×2780×3930		2120×3030×4190		2250×8230×4580	
冲床精度	Presses precision		GB/JIS 1class 一级											
模垫能力	Die cushion capacity	Ton	3.6		6.0		10		14		14		14	
模垫行程长	Stroke	mm	70		85		80		100		100		100	
模垫有效面积	Die cushion effective area	mm <sup>2</sup>	440×300		490×350		640×420		710×480		810×480		810×480	