

"筌筌" 注塑机

TSUENSAINT SERIES INJECTION MOLDING MACHINE



"筌筌" 压铸机

TSUENSAINT SERIES DIE-CASTING MACHINE



NINGBO TSUENSAINT TECHNOLOGY DEVELOPMENT CO.,LTD.

宁波荃筌科技发展有限公司

Add: Building 4, No.128, Jingyuan Road, High Tech Zone, Ningbo, Zhejiang.

地址: 浙江省宁波高新区晶源路128号4号楼

Mob: 0086-15658273134 0086-13967807575

Email: michelle@tsuensaint.com info@tsuensaint.com



大型冲压自动化方案解决专家

LARGE POWER PRESS  
AUTOMATION SOLUTIONS EXPERTS

NINGBO TSUENSAINT TECHNOLOGY DEVELOPMENT CO.,LTD. 宁波荃筌科技发展有限公司

# TSUEN SAINT 荃笙

## HIGH PRECISION POWER PRESS



宁波荃笙科技发展有限公司，专心致力于高精冲压机床设备的集研发、设计、生产、销售和服务，主营产品包含各类开式、闭式单/双点机械式、伺服冲床和高速冲床近20个系列，涵盖了从25吨到2500吨等30多种规格的机型。产品广泛应用于新能源、家电制造、仪器仪表、汽车配件、电机制造、电器制造、医疗器械、五金等金属制品加工领域。凭借公司二十多年的专业制造高精冲压机床技术经验及创新能力，公司科研技术团队能够为用户提供个性化工程设计和冲压集成解决的专业方案与服务。

NINGBO TSUENSAINT TECHNOLOGY DEVELOPMENT CO.,LTD. is dedicated to the R&D, design, manufacture, sales and service of high-precision presses. The products cover mechanical and servo presses with gap frame, C-frame, single/double points structure and high-speed presses, nearly 20 series, more than 30 types of models with capacity from 25 tons to 2,500 tons. Products are widely used in new energy, home appliance manufacturing, instrumentation, auto parts, motor manufacturing, electrical manufacturing, medical equipment, hardware and other metal processing fields. Relying on the professional experience of more than 20 years in metal stamping and innovation capabilities, our technical teams are able to provide customers with professional solutions and services for personalized engineering design and stamping integration solutions.



我司拥有精良数控装备的CMA制造与精密检测器具及理化设施，以及数字化控制的产品质量保证体系。我司和国家塑机质量监督检验中心共建为机械压力机实验基地，同时被评为“省级高新技术企业研究开发中心”、“省级企业研究院”，先后成为“浙江制造精品”企业，国家高新技术企业、及国家专精特新“小巨人”企业。

近年来,公司先后承接了十几项省、市重点科技攻关项目,

获得了“浙江省科技进步奖三等奖”等荣誉，获批十几项国家发明专利和上百项实用新型专利，多个产品被列为浙江省制造业重点领域首台（套）产品。



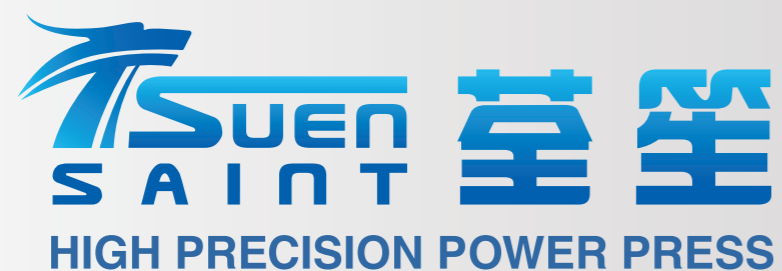
TSUENSAINT equips CMA manufacturing with excellent CNC equipment, precision testing equipment and physical and chemical facilities, as well as a digitally controlled product quality assurance system. Our company has jointly established a mechanical press experimental base with the National Plastic Machinery Quality Supervision and Inspection Center and was rated as the "Provincial High-tech Enterprise Research and Development Center" and "Provincial Enterprise Research Institute". Meanwhile, we have successively been honored as "Zhejiang Manufacturing Quality Enterprise", National High-tech Enterprise, and the National Specialization and Innovation "Little Giant" Enterprise.

In recent years, the company has successively undertaken more than a dozen provincial and municipal key scientific and technological research projects, won honors such as the "Third Prize of Zhejiang Science and Technology Progress Award", and was approved more than a dozen national invention patents. Some achievements were listed as the first set products in the key areas of manufacturing in Zhejiang Province.

## SEEKING INCREASING PERFECTION QUALITY AND EFFICIENT

“路行万里，始于专注，成于专业”。公司愿与社会各界朋友一起携手，提升自身核心竞争力，将荃笙打造成为行业领先的精密冲压机床智能装备制造和服务企业。

Sustainable development begins with concentration and becomes professional. With mutual cooperation and support, we are keeping to enhance our core competitiveness and build TSUENSAINT as the industry-leader of precision and intelligent stamping press manufacturer and service provider.



荃笙科技团队为顾客提供  
个性化工程设&伺服驱动/控制系统高端设备

TSUENSAINT Technology Group provides high-quality equipment Design/servo/-  
control system for customers





ENGINEERING  
TECHNOLOGY



大型意大利PAMA数控镗铣床  
LARGE ITALIAN PAMA CNC BORING AND MILLING MACHINE

CARRY FORWARD  
CRAFTSMANSHIP



激光跟踪仪 LASER TRACKER

SEEKING INCREASING  
PERFECTION QUALITY AND  
EFFICIENT



激光跟踪仪 LASER TRACKER

PERFECTION  
QUALITY

工程研究中心 Engineering Research Center



追求精益求精  
品质高效





# APA SERIES

Precision Press Machine

## 精密冲床

- 机身采用优质钢板焊制，经过消除应力工艺处理。提高了整机精度的稳定性和可靠性能。
- The machine body is welded of quality steel sheet and treated by tension elimination, improve stability and reliability of precision of the machine.



# 15-400T

## Standard Unit

### 标准装置

- Hydraulic over-load protector
- Manual slide adjust device (apa below 60)
- Automatic slide adjust device(apa60 or more)
- Main motor ( adjustable)
- Die height indicator (apa below 60)
- Automatic die height indicator (apa60 or more)
- Balance device
- Rotary cam switch
- Crank angle indicator
- Electrical stroke counter
- Air source receptacle
- Against over-run safety device
- Air ejector
- 油压式过载保护装置
- 手动式滑块调整装置(APA60B及60以下)
- 电动式滑块调整装置(APA60B以上)
- 主电机(可调速)
- 机械式模高指示器(APA60B及60以下)
- 电动式模高指示器(APA60B以上)
- 滑块及模具平衡装置
- 旋转凸轮开关
- 曲轴角度指示器
- 计数器
- 空气源接头
- 二度落保护装置喷风装置

## 选购项目

### Optional

电动式黄油润滑装置	Automatic lubrication system
光电保护装置	Photo-electronic safety device
气压模垫装置	Pneumatic die cushion device
脚踏开关	Foot switch
快速换模装置(举模器、夹模器或移模臂)	Fast mdd change device (Die lifter, clamp and die arm sepjes)
滑块上部打料装置	Slide knock-out device
误送检测装置	Misfeed detection consent
电源插座	Power supply
防震脚	Feeder
送料机(空气、机械及NC各类)	Anti-vibration pad
料架	Uncoiler
矫平机	Leveler
机械手	Robot hand
模具照明装置	Die room light
触摸屏(预断、预裁、总计数)	Touch pad
电动调模装置(15-60T)	Electrical slide adjust device(15-60T)

融合欧美、日本先进技术 / 机能结构CAE动态仿真优化设计
高刚性机身优质钢仿形焊制或整体铸造件回火 / 振动应力处理
导柱 / 导杆等主关零部件经镀铬 / 氮化 / 研磨高标准工艺处理
高性能控制器 / 电器、液压 / 气动元件等国际品牌高端配置
国际冲压设备技术等级机器指标 / 制造全过程测验
The advance technical optimized structure design of machine
The machine body is welded high quality steel sheet and treated by tension elimination
The guide / guide bar of key parts are treated by hard chrome plated / nitrogen / rubbing technology
Adopted well known controller / driving equipment,hydraulic equipments /gas driving parts etc
International technology class for press machine,measures machine specification

## The press machine are widely used for

为保证机器运转的相对平稳性，采用对称两支滑块、平衡器装置设计方式。  
In order to guarantee the machine running in stable and smooth, adopts the design of symmetrical two slid boards with balancer.

调模精度高达0.1mm，安全、便捷、可靠。  
The precision of mold adjusting up to 0.1mm, safety, reliable and convenient .

曲轴、齿轮、连杆等部件，经硬氧化和研磨等，工艺处理后，只有极高的综合机械性能和耐用性。  
Crank, gear , connect bar are oxidized hardening and milled, having super comprehensive mechanical performance and durable function.

机器结构设计合理，便于实现自动化生产和流水生产机构的组合。  
Reasonable structural design, is convenient for automatic production and line production.

采用高强度可靠的离合器／刹车装车和双联电磁阀，过载保护装置，确保生产操作安全最大化程度。  
Used reliable high intensity clutch / brake and twin electromagnetic valve, overloading protector can guarantee safe production all-around.

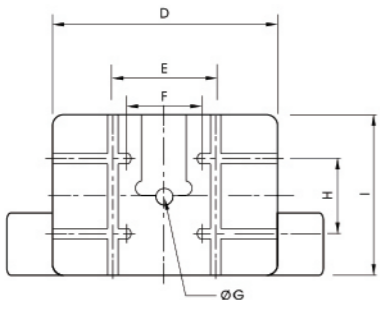
冲压机床广泛应用于：  
Manufacturing in the industries  
航天航空  
Aviation& aerospace  
船舶汽车  
Ship & vehicles  
电器电子  
Ship & vehicles  
仪器仪表  
Instruments and meters  
医疗器械  
Medical facilities  
五金用品等行业的制造。  
Hardware etc.

► Specification 规格参数

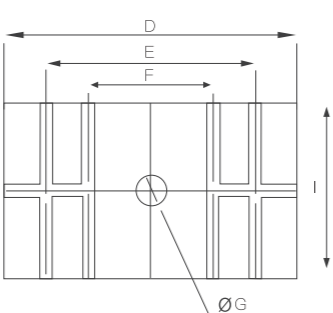
规 格	Specification	单 位	APA-15	APA-25			APA-35		APA-45		APA-60	
型 式	Model		V	V	H	S	V	H	V	H	V	H
吨 数	Capacity	Ton	15	25			35		45		60	
冲力发生位置	Rated tonnage point	mm	1	3.2	1.6	3.2	3.2	1.6	3.2	1.6	4	2
每分钟行程数 变速	Speed changing	s.p.m	120-180	60-140	130-200	60-120	40-120	110-180	40-100	110-150	35~90	80-120
行 程	Stroke	mm	60	70	30	80	70	40	80	50	120	60
最大闭合工作高度	Die height	mm	200	195	215	195	220	235	250	265	310	340
滑块调整量	Slide adjustment	mm	50	50		50	55		60		75	
上工作台尺寸	Slide area	mm	300×230×50	300×230×50			360×250×50		400×300×60		500×360×70	
下工作台尺寸	Bolster area	mm	680×300×70	680×300×70		680×300×65	800×400×70		850×440×80		900×500×80	
模 柄 孔	Shank hole	mm	ø38.1	ø38.1			ø38.1		ø38.1		ø50	
主电动机	Main motor	kw.p	2.2×6	3.7×4			3.7×4		5.5×4		5.5×4	
滑块调整机构	Slide adjust device	HP	手动 manual operation									
使用空气压力	Air pressure	kg/cm <sup>2</sup>	6	6			6		6		6	
冲床精度	Presses precision		GB/JIS 1class 一级									
冲床(长×宽×高)	Presses dimension	mm	1360×930×2100	1450×985×2300			1480×1055×2450		1680×1105×2600		1700×1155×2900	
模垫能力	Die cushion capacity	Ton	-	-			-		-		-	
模垫行程长	Stroke	mm	-	-			-		-		-	
模垫有效面积	Die cushion effective area	mm <sup>2</sup>	-	-			-		-		-	

APA-80		APA-110		APA-125		APA-160		APA-200		APA-260		APA-315		APA-400	
V	H	V	H	V	H	V	H	V	H	V	H	V	H	V	H
80		110		125		160		200		250		315		400	
4	2	6	3	5	3	6	3	6	3	7	3.5	8	4	8	4
35-80	80-120	30-60	60-90	35-65	45-80	30-55	35-70	25-50	30-60	25-45	30-50	25-40	25-50	25-35	25-30
150	70	180	80	160	100	180	110	200	130	220	150	250	180	250	180
340	380	360	410	370	400	400	435	450	485	500	535	500	585	550	585
80		80		90		100		110		110		120		120	
560×420×70		650×470×80		620×520×80		700×580×100		850×650×100		880×700×100		950×700×110		950×700×110	
1000×550×90		1150×600×110		1120×720×120		1260×760×140		1400×820×160		1500×840×180		1650×840×180		1800×840×190	
ø50		ø50		ø70		ø70		ø70		ø70					
7.5×4		11×4		11×4		15×4		18.5×4		22×4		30×4		37×4	
clectrial driving电动															
6		6		6		6		6		6		6		6	
GB/JIS 1class 一级															
1875×1330×3100		2000×1460×3350		2070×1530×3250		2260×1690×3600		2468×1890×3910		2730×1982×4050		2900×2060×4530		3020×22604600	
3.6		6		3.6		8		10		14		14		14	
70		85		70		85		80		100		100		100	
440×300		490×350		440×300		490×350		640×420		710×480		810×480		810×480	

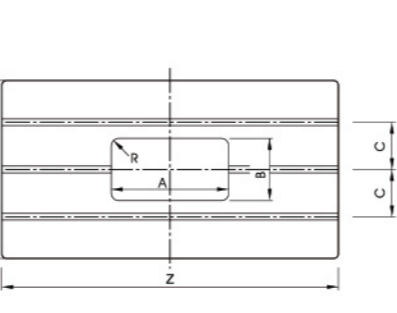
► Upper Table 上工作台



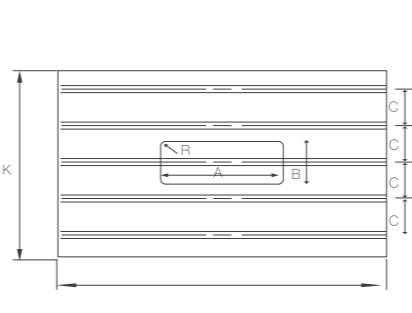
APA-15~APA-110



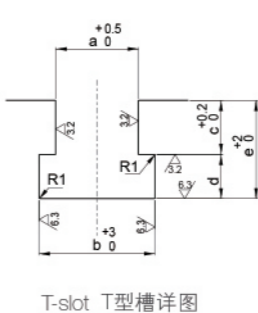
APA-125~APA-400



APA-15~APA-110



APA-125~APA-400

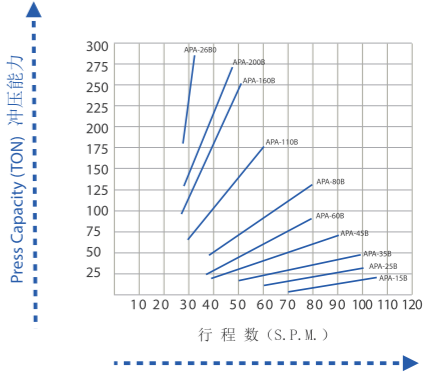
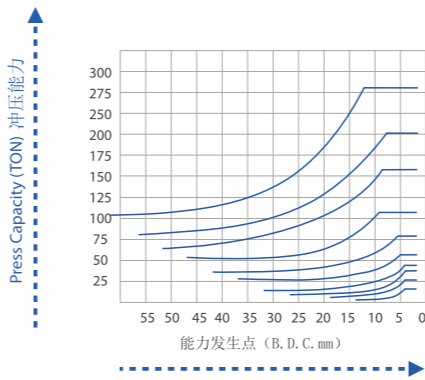


T-slot T型槽详图

Model	A	B	C
a	18	22	28
b	30	37	48
c	18	24	28
d	12	16	20

规 格	APA-15	APA-25	APA-35	APA-45	APA-60	APA-80	APA-110	APA-125	APA-160	APA-200	APA-260	APA-315	APA-400
A	240	240	280	300	320	360	400	400	440	480	520	520	520
B	120	120	140	150	160	180	200	200	220	240	260	260	260
C	90	90	120	120	150	150	160	110	250	175	175	175	175
D	300	300	360	400	500	560	650	620	700	850	880	950	950
E	-	-	-	-	220	300	300	300	500	700	700	700	700
F	150	150	160	210	220	220	220	-	300	350	350	350	350
G	38.1	38.1	38.1	38.1	50	50	50	70	70	70	70	70	70
H	80	80	100	120	160	160	200	-	-	-	-	-	-
I	230	230	250	300	360	420	470	520	580	650	700	700	700
Z	680	680	800	850	900	1000	1150	1120	1260	1400	500	1650	1800
K	300	300	400	440	500	550	600	720	760	820	840	840	840

► Graph 能力曲线图



# TSUENSAINT PRESS

GROUP SUPPLY HIGH QUALITY EQUIPMENT WITH  
ENGINEERING DESIGN / SERVO DRIVING / CONTROLLING SYSTEM FOR CUSTOMERS

# GLOBAL COOPERATION

全球合作





专业自动化生产设备及方案提供商  
Professional Provider of Automatic Production and Solutions

