

"筌筌" 注塑机

TSUENSAINT SERIES INJECTION MOLDING MACHINE



TSUENSAINT

die-casting machine

筌筌 | 精密压铸机床

"筌筌" 高精冲床

TSUENSAINT SERIES HIGH PRECISION PRESS MACHINE



300-16800KN

NINGBO TSUENSAINT TECHNOLOGY DEVELOPMENT CO.,LTD.
宁波筌筌科技发展有限公司

Add: Building 4, No.128, Jingyuan Road, High Tech Zone, Ningbo, Zhejiang.
地址: 浙江省宁波高新区晶源路128号4号楼

Mob: 0086-15658273134 0086-13967807575

Email: michelle@tsuensaint.com info@tsuensaint.com

宁波筌筌科技发展有限公司
NINGBO TSUENSAINT TECHNOLOGY DEVELOPMENT CO.,LTD.



TSUENSAINT

宁波荃笙科技发展有限公司位于宁波市北仑区，长期以来从事压铸机的研发 & 制造。厂区外设有机械加工分厂和总部精加工车间、总装车间。建立有企业工程技术中心、压铸机事业部研发实验室、实行PDM程序化设计、ERP管理系统、零件加工CAM制造加工等信息化工程，公司通过ISO质量管理体系认证和产品欧盟CE认证。“荃笙”压铸机凭借国外先进专业技术及具备高端检测器具及理化测验等手段，实现品质保证。

“荃笙”多款系列精密压铸机，以精为誉、以诚为本、铭求品质、竭诚服务，与客户共创卓越。

Company Profile

NINGBO TSUENSAINT TECHNOLOGY DEVELOPMENT CO.,LTD. located in Beilun Ningbo, deals with the research and manufacture of high-end die casting machine for many years. We have established the machining factory, headquarter finishing workshop as well as assembly workshop. Besides, we have also built enterprise engineering technology center, die casting machine division R&D laboratory. We have carried out the PDM program design, ERP administration system and information engineering such as CAM manufacturing of parts processing etc. Our company is qualified with ISO quality management system certification as well as European CE certification. We have combined with foreign advanced professional technology, high end testing equipment as well as physical and chemical testing method so to ensure good quality of “TSUENSAINT” die casting machine.

TSUENSAINT series high precision die casting machine always adheres to the principle of precision-oriented, honesty-oriented, quality-oriented as well as dedicated&sincere service and pursue excellence and create a brilliant future with our customers.

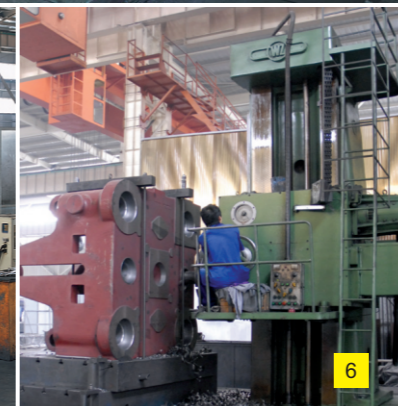
海纳百川 旭日东升

CREATE EXCELLENCE JOINTLY

制造集锦 MANUFACTURING HIGHLIGHTS



工欲善其事——必先利其器
Good tools are prerequisite to the successful execution of a good job



1 — 2 总装二车间一角
A corner of assembly workshop No.2

3 — 10 CAM制造加工
CAM manufacture process

TSUENSAINT PRECISION DIE CASTING MACHINE

— DISTINGUISHED, LEADING, TOP QUALITY, HIGH EFFICIENCY

銜銜精密壓鑄機 —— 獨特、領先、優質、高效



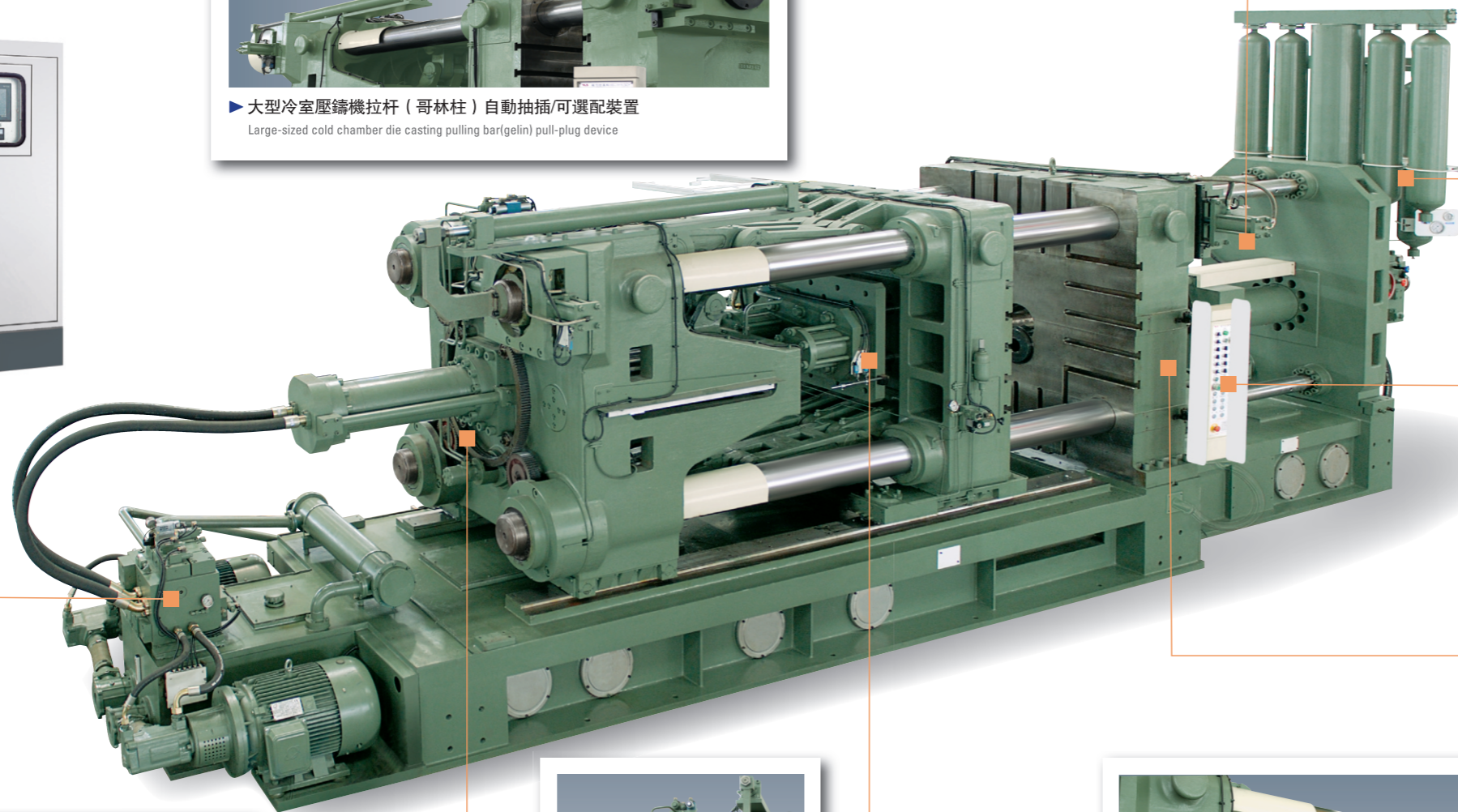
▶ 大型冷室壓鑄機拉杆（哥林柱）自動抽插/可選配置
Large-sized cold chamber die casting pulling bar(Gelin) pull-plug device



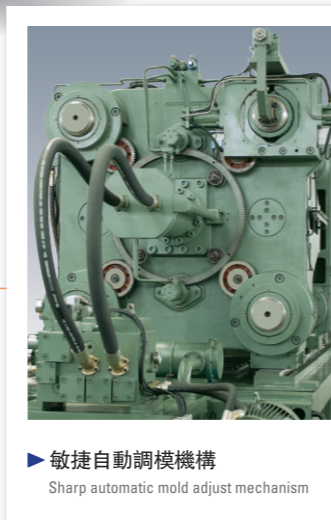
▶ 高端壓鑄成型領先技術、超高速壓射裝置
Up-to-date die casting molding technology ,high-speed press-injection device



▶ 進口高檔工業控制器——屏顯檢測控制系統
Imported high-class industrial controller—screen display test-control system



▶ 高配置的高響應液壓邏輯閥系統
High configuration ,high response hydraulic system



▶ 敏捷自動調模機構
Sharp automatic mold adjust mechanism



▶ 曲肘式斜排五支點鎖模機構
Toggle five-point support mold clamping mechanism



▶ 高剛性球墨合金模板
High rigidity nodular alloy mold platen

SELF INNOVATION & ENERGY - SAVING DEVICE

自主創新·節能設備

筌筌倡導壓鑄機——變頻&伺服驅動節能系統技術

TSUENSAINT special recommendation die casting machine-frequency-conversion & servo drive energy-saving system technology

珍惜能源倡導節能已是當今全球化共同的追尋，筌筌根據壓鑄機生產工藝特性而研制推出高效/強力節能系統的機型。並將高節能技術&機器性能科學地融合——讓客戶實現無與倫比的使用價值。

Cherish energy resource and advocate energy-saving is the common seeking target of globalization today. TSUENSAINT company have developed the die casting machine with high efficiency/powerful energy-saving system based on its characteristic of manufacturing technique. With scientific fusion of high energy-saving technology and machine features, so to achieve incomparable use value of our machine.

CA&MA系列冷室壓鑄機——變頻驅動高效節能型特性:

CA&MA series cold chamber die casting machine-frequency conversion drive high efficiency energy-saving characteristic

↑ 高效節能
ENERGY-EFFICIENT
↑ >35%

▶ 自主專用模塊技術的驅動器+控制器專用程序+專用電機+高性能油泵優化合成的電液控制系統。

▶ Special drive of autonomous module technology+specific program on controller+special computer+high performance oil pump optimized electric hydraulic control system

▶ 系統壓力/流量控制技術--能根據機器動作負載感應比例補償的自動匹配，且無高壓溢流的能量損失，並能有效抑制油溫上升，有效確保壓鑄成型的品質穩定並增加機器使用壽命。

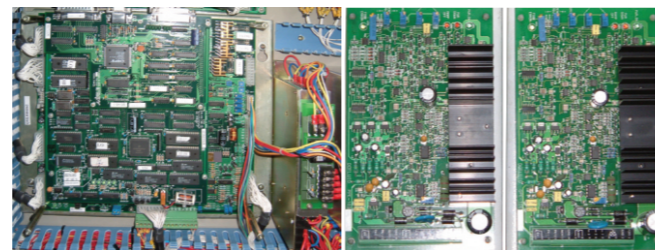
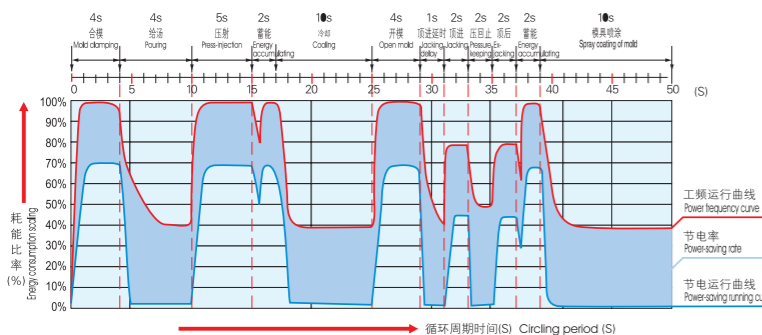
▶ System pressure / flow control technology, which can do automatic matching based on machine action load sensing proportional compensation, and no energy loss of high pressure overflow, which can effectively suppress oil temperature rise, ensure the stable quality of die-casting process as well as increase machine lifetime accordingly;

▶ 系統具有根據成型工藝需求設定無級轉速或選擇馬達自行運轉狀態至自行軟啟動循環功能，且不影響製品的生產的周期。CA·MA系列高效節能型的壓鑄成型耗電要比常規機器通常節能>35%。

▶ The system has the function that can set stepless speed according to the molding process demand or select the motor self-running state to the self soft restart, and it does not affect the production cycle time of the final product. CA·MA series high efficiency energy-saving type die casting machine can reduce the power consumption more than 35% compared to the standard machine.

CA&MA系列冷室壓鑄機節能效果曲綫圖 / 系統元件

The curve analysis chart of power saving result of CA·MA Series cold chamber die casting machine /elements and parts of system



CJ&MJ系列壓鑄機伺服驅動超強節能型特性:

CJ&MJ series die casting machine servo drive super energy-saving characteristic

↑ 超強節能
SUPER ENERGY EFFICIENT
↑ >60%

▶ 由本公司中外合資專業技術人員創新研發的專用高端模塊技術伺服驅動器+伺服馬達+控制器專用程序軟件+特種高性能泵浦優化組成的高響應電液伺服實現控制系統。

▶ Co-operatively developed by the experts, the driver of the up-to-date mold board technology+servo motor+special program software for controller use+ servo control system of high response electro-hydraulic comprised of specially made high performance oil pump.

▶ 系統實現壓力/流量閉環控制技術，實現動作的重複定位高精度，伺服驅動輸出匹配功率可按控制器設定的工藝參數指令而高速響應，並能有效抑制油溫，更能確保壓鑄成型的品質和增加機器使用壽命。

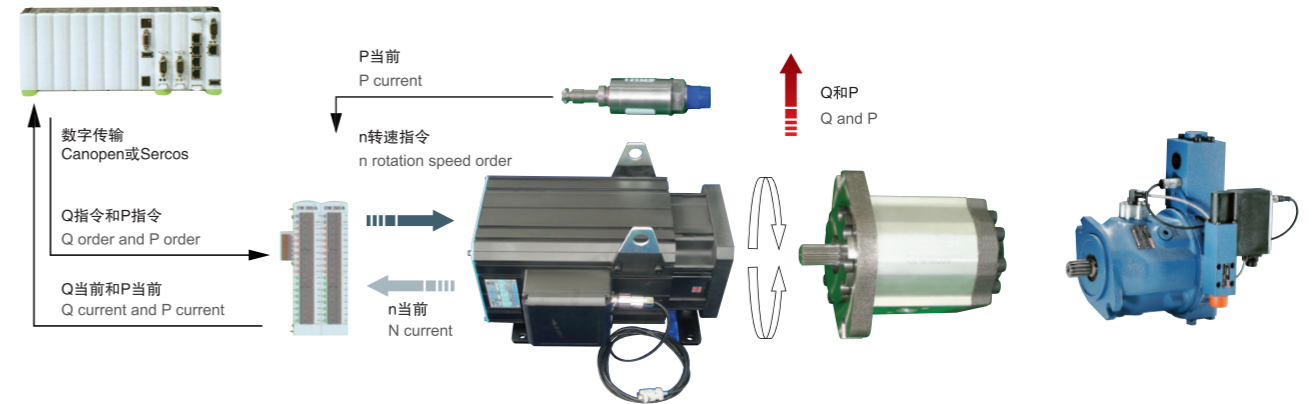
▶ The system carries out pressure-flow closed-loop control technology, guarantee the high accuracy for repeating positioning of the motions, the servo driver output matching power will be responded quickly according to the technical parameter order set by controller. And can control oil temperature effectively, keep top quality of castings and increase machine using period.

▶ 系統能自然地根據成型工藝要求設定階段性超低速且保持壓力的優點，且不影響製品生產周期的產能。CJ·MJ系列超強節能型壓鑄機電耗要比常規機器通常節能>60%。

▶ The system can set the staged ultra-low speed and maintain the pressure according to the molding process requirements, and it does not effect the cycle time of the product as well as production capacity. CJ·MJ series powerful energy-saving die casting machine can reduce power consumption more than 60% compared to the standard machine.

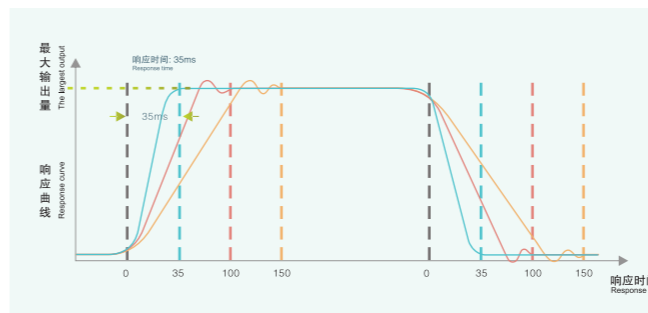
如：伺服馬達驅動雙容積變量泵——是最具性價比的機能系統

For example: servo motor driven biproduct variable displacement pump—the most cost-effective function system



系統高速響應比照

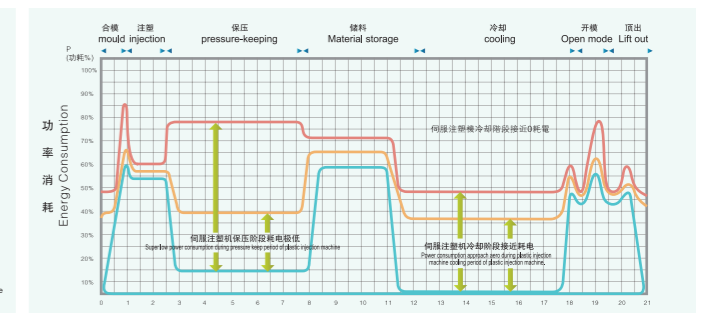
The comparison of systemic high speed response



— 定速馬達定量泵驅動 Fixed-speed motor-driven dosing pump
— 定速馬達變量泵驅動 Variable speed motor driven pump
— 伺服馬達定量泵驅動 Quantitative servo motor driven pump

系統功率消耗比照

The comparison of systemic power consumption



— 定速馬達定量泵驅動 Fixed-speed motor-driven dosing pump
— 定速馬達變量泵驅動 Variable speed motor driven pump
— 伺服馬達定量泵驅動 Quantitative servo motor driven pump

THE TECHNICAL STUDY OF DIE CASTING FORMING

壓鑄成型工藝探索

- ▶ 一般來說，鋁合金充型時間0.03-0.15秒為宜。充型時間受澆口面積、排氣槽大小、合金種類以及澆注溫度、衝頭速度、鑄造壓強的影響，需對這些進行控制。
- ▶ 應根據不同的產品，控制澆注溫度並實現標準化，壓型設計時，為使它溫度分布均勻，設有冷却水路和集渣槽，但總會有些溫度差。壓型溫度的管理，通常是控制壓型表面的幾個點，其溫度不是整個壓型的溫度，統一用合型之前的溫度來控制也行，Al合金時，是150-300℃，Zn合金時，為150-220℃。另外，動型與定型的溫度差要盡量小。
- ▶ 儲能器內的壓力對於壓射壓力有重大的影響，所以，當氣體量一減少，充型的最後壓力也會大大降低，影響鑄件質量。如果壓射衝頭壓射一次儲能器內部壓強降低10%以上，則需要補充氣體。
- ▶ 離型劑要根據鑄件要求進行選擇，要噴塗適當濃度。使用時要噴施最少的量而且要噴塗均勻。重點噴塗冷却進料口周圍及產品壁厚區域。活動芯子、頂杆、回程銷等的滑動部分和壓射室、衝頭上潤滑劑須塗抹適量。太多的話，會混入金屬液，進入型腔，導致鑄造缺陷。
- ▶ 當壓射完成在型內冷凝的時間過長，由于凝固收縮力而形成的抱型力就會加大，鑄件難以頂出。生產薄壁件時，很容易頂壞產品。時間太短，又容易凝固不好，造成鑄件變形。因此，壓射後要盡快達到取件溫度，就需要很好地冷却壓型，為此還希望澆注量和澆注溫度的穩定。

CK&MK系列冷室壓鑄機
Cold chamber die casting machine



Note: ① the picture is for reference only, may be different from the actual

HK系列熱室壓鑄機
Hot chamber die casting machine



② please contact us when you want to buy the machine with European CE standard

提示：①資料中產品圖僅供參考，可能與實際出售物偶有不同 ②當您欲購具備歐盟CE標準的機器、請與我們闡明

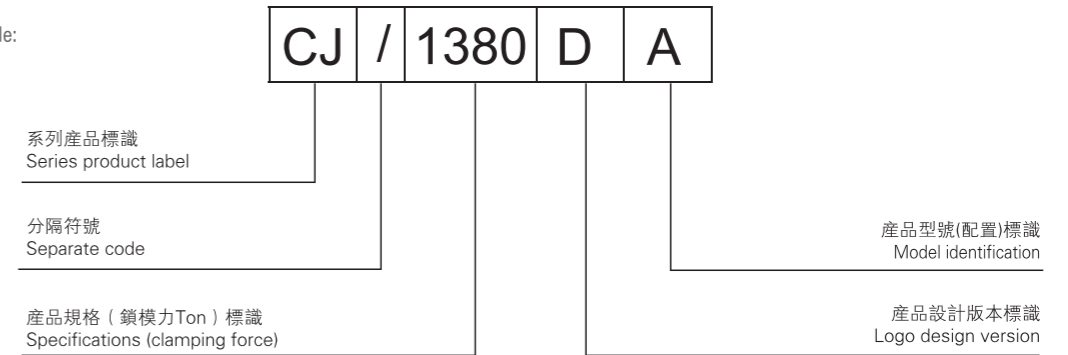
- ▶ In general for aluminum alloy, the reasonable mold filling time are 0.03---0.15 second. The mold filling time are affected by the area of pouring head, gas exhausting slot, kind of alloy, speed of punch head, pressure intensity of casting, it need to control these elements.
- ▶ It must carry out standardization on pouring temperature control according various products, for the purpose of temperature even distributing when design the profiling, though have cooling water route and residue slot, but still have some different temperature. For the profiling temperature management, in general it controls some points on surface, which temperature is not the whole profiling temperature, it is available use the temperature before mold clamping, for AL alloy is 150-300 °C, for Zn alloy is 150-220°C , in addition, the temperature difference between moving profiling and dead profiling must be as small as possible.
- ▶ The internal pressure of accumulator has the big effectiveness to press-injection pressure, therefore the lasting pressure will be reduce in large scale after mold filling which affect the casting quality. It need to recharge gas if the internal pressure intensity has reduced more than 10% after the punch press-injection once time.
- ▶ The mold release selection must be according to the requirement of castings, must spray with reasonable concentration . the spraying key points cooling filling inlet and thick-wall area of products. It must spray evenly with minimum quantity. The movable core, ejector, stroke pin etc. moving parts and press-injection chamber, punch head, for lubrication quantity should be suitable. If too much, they will be mixed into metal liquid, and into the cavity to cause defective casting.
- ▶ If the condensation in mold with too long time after press-injection, due to the condensation the sharp adhering force will be increased so it is difficulty for casting lift out. It is easy to turn out defective products during lift out when it produce thin-wall product. So to the target of as quickly as possible to arrive to the casting taking-out temperature, must do well for cooling profiling, and also must keep the stable pouring quantity and pouring temperature.

PRODUCT SPEC / TYPE IDENTIFIER

筌筌精密壓鑄機床系列產品規格 / 型號——標識認知

例如：

For example:



系列產品標識=機款標識+機能標識的組成

Product series label =style label +model label

機款標識 Machine Model Mark

- ▶ 機種款式標識C為：冷室壓鑄機床
- ▶ 機種款式標識M為：冷室鎂合金壓鑄機床
- ▶ 機種款式標識H為：熱室壓鑄機床
- ▶ Mark C: Cold chamber die casting machine
- ▶ Mark M: Cold chamber die casting machine for magnesium alloy
- ▶ Mark H: Hot chamber die casting machine

機能標識 Machine Function Mark

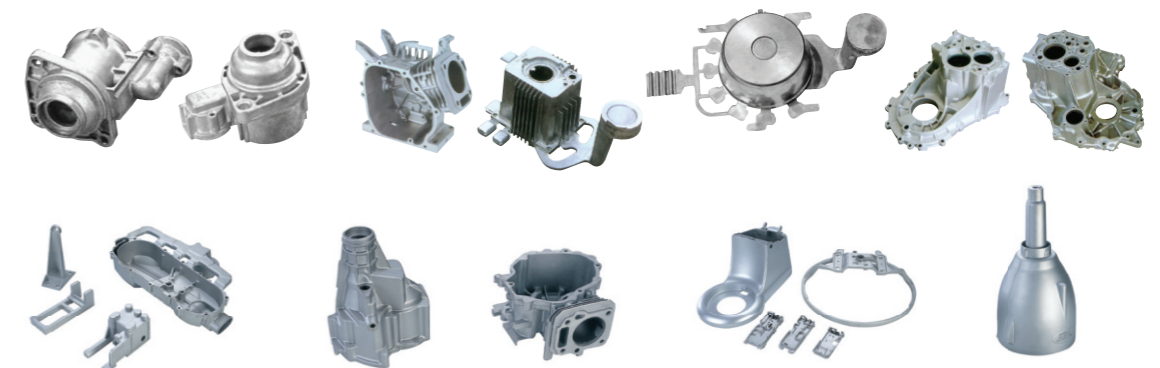
- ▶ 機能型式標識K為：常規標準型系統
- ▶ 機能型式標識A為：高效節能型系統
- ▶ 機能型式標識J為：強力節能型系統
- ▶ Mark K: Standard system
- ▶ Mark A: High efficiency energy-saving system
- ▶ Mark J: Powerful energy-saving system

產品型號標準配置資料垂詢

Please feel free to contact us if you would like to learn details about our machine configurations for each model / type

“筌筌”精密壓鑄機床廣泛應用於：航天航空、船舶汽車、電器電子、儀器儀表、醫療器械、五金用品等行業的鉛、鋅、銅、鋁、鎂等有色金屬產品壓鑄。

TSUENSAINT precision die casting machine are widely used for lead, zinc, copper, aluminum, magnesium etc non-ferrous die casting in the industries of aviation & aerospace, ship & vehicles, electric and electronic appliances, instruments and meters, medical facilities, hardware's etc.



HOT CHAMBER SERIES DIE CASTING MACHINE PARAMETERS

H款(熱室)精密壓鑄機/規格參數

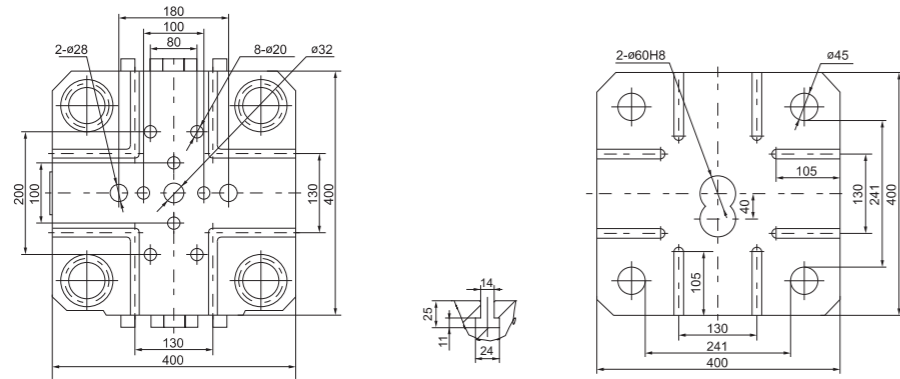
| 規格 | Specification | Tons | H/30D | H/50D | H/90D | H/130D | H/160D | H/200D |
|------------------|--|------|--------------------|--------------------|--------------------|--------------------|--------------------|--------------------|
| 鎖模力 | Clamping Force | kN | 300 | 500 | 900 | 1300 | 1600 | 2000 |
| 鎖模行程 | Open stroke | mm | 200 | 230 | 280 | 350 | 350 | 400 |
| 頂出力 | Ejector Force | kN | 35 | 50 | 60 | 88 | 108 | 108 |
| 頂出行程 | Ejector stroke | mm | 50 | 60 | 60 | 85 | 85 | 100 |
| 模具厚度(最小-最大) | Die-Thickness(Min-Max) | mm | 120-320 | 120-340 | 120-360 | 170-450 | 205-505 | 250-550 |
| 拉杆內間距 | Space Between Tie-Bars | mm | 241x241 | 310x310 | 360x360 | 409x409 | 459x459 | 510x510 |
| 拉杆直徑 | Diameter of Bars ϕ | mm | 45 | 56 | 65 | 75 | 80 | 90 |
| 壓射位置 | Injection Position | mm | 0 | 0 | 0 | 0 | 0 | 0 |
| 壓射力 | Injection Force | kN | 35 | 65 | 88 | 108 | 108 | 130 |
| 壓射行程 | Injection Stroke | mm | 110 | 130 | 150 | 150 | 150 | 175 |
| 離嘴行程 | Disengage Stroke | mm | 200 | 192 | 200 | 200 | 200 | 200 |
| 最大澆注量 (鋅) | Injection Weight (Zn) | kg | 0.6 \square (Zn) | 1.1 \square (Zn) | 1.5 \square (Zn) | 2.1 \square (Zn) | 2.5 \square (Zn) | 3.3 \square (Zn) |
| 壓射衝頭直徑 | Injection Plunger Diameter ϕ | mm | 45 | 50 | 60 | 65 | 70 | 75 |
| 系統工作壓力 | System Working Pressure | Mpa | 16 | 16 | 16 | 16 | 16 | 16 |
| 空循環周期 | Dry Cycle Time | s | ≤ 4 | ≤ 5 | ≤ 5.5 | ≤ 7 | ≤ 7 | ≤ 7 |
| 電機功率 | Motor Power | kW | 7.5 | 11 | 11 | 15 | 15 | 15 |
| 坩堝有效容量 | Pot Capacity | kg | 160 | 250 | 380 | 360 | 360 | 720 |
| 燃油爐 | Fuel Oil Consume | kg/h | 3.6 | 4.8 | 4.8 | 4.8 | 4.8 | 6.3 |
| 電爐 | Electric Furnace Power | kW | 20 | 24 | 24 | 30 | 30 | 42 |
| 油箱容量 | Tank Capacity | L | 250 | 300 | 400 | 400 | 400 | 400 |
| 機器重量 | Machine Weight | kg | 3000 | 3500 | 4600 | 5800 | 6150 | 7900 |
| 機器外形尺寸 (長x寬x高) | Overall Dimensions of Machine (L x W x H) | mm | 3400x1640x2100 | 3400x1450x1880 | 4220x1700x2020 | 5200x1630x2350 | 5600x1630x2580 | 5950x1750x2600 |

說明: 資料中規格參數如有變更, 恕不另行通知。 / All Above Technical Parameters Are Subject To Change Without Prior Notice.

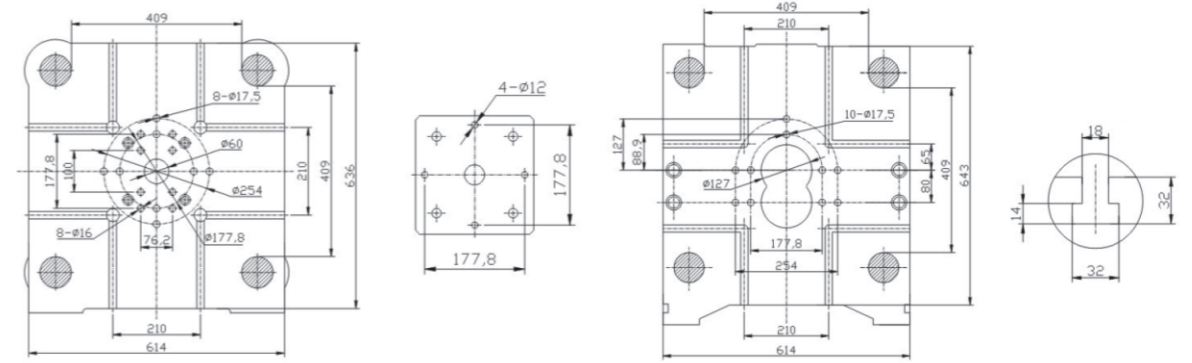
H (HOT CHAMBER SERIES) DIE CASTING MACHINE – PLATEN DRAWING

H款(熱室)精密壓鑄機——模板示意圖

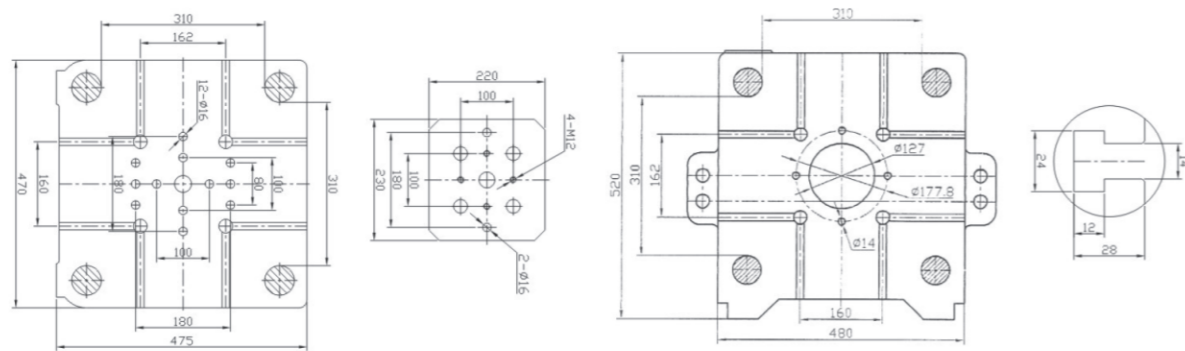
H30



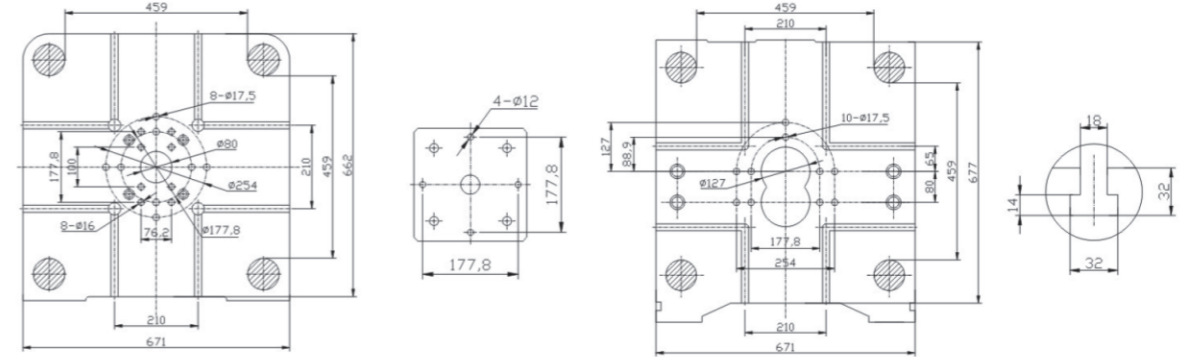
H130



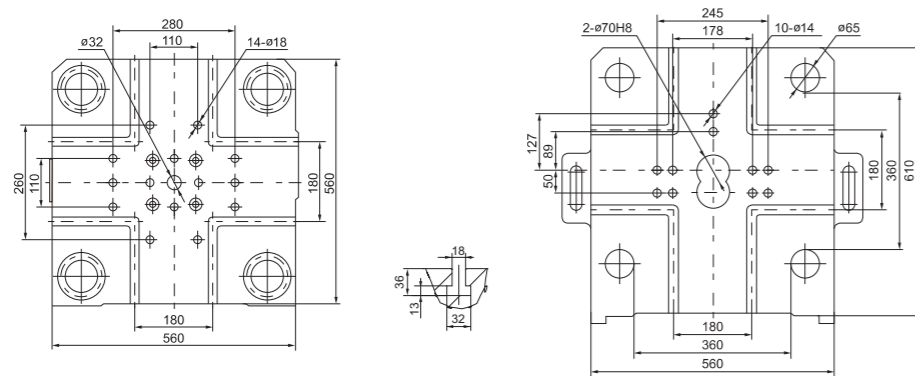
H50



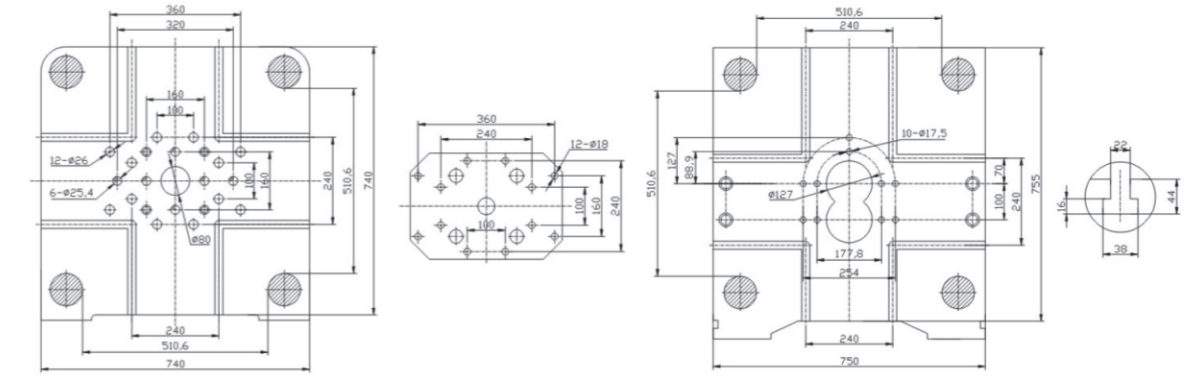
H160



H90



H200



C/M SERIES STANDARD UNIT C/M系列标准装置

| 鎖模系統 | MOLD CLOSING SYSTEM |
|----------------------|---|
| 高刚性耐磨性球墨合金模板 | High rigidity and wear resistance nodular alloy mold platen |
| 高刚性肘式斜排五支点锁模机构 | High rigidity five-point support toggle |
| 高拉力合金钢导柱外层镀铬 | Euro design multi-point oil-bearing graphite bush |
| 欧规多点石墨合金油衬套 | High wear resistant aluminum alloy platen support slider with dust clean device |
| 高耐磨铝合金滑脚带灰尘清扫装置 | High rigidity and wear resistant monolithic guide plate |
| 高刚性耐磨性整体式导轨 | Euro design eject platen and T slots device |
| 欧规设计顶出模板机构与T型装置 | Germany import material support mold adjustment platen to prevent adjustment hanged |
| 德国进口材料支撑调模板, 调模防绞死装置 | Big space between tie bars and big size mold platen |
| 大空间拉杆间距与模板尺寸 | Mechanical tie bar extraction by manual (1pc) |
| 手动机械式抽拉杆装置 | Die close and die open with lineal transducer control |
| 开合模行程电子尺控制 | Die close with low pressure protection function |
| 合模低压模板功能 | Die height adjustment with hydraulic motor |
| 液压马达驱动调模装置 | Mold adjustment by manual with low speed and high speed |
| 手动调模慢速与快速控制 | Multi-step eject setting function |
| 液压顶出多次设定功能 | Eject stroke control by proximity switch |
| | Eject in and out with time holding and delay setting function |
| | Core in and out function select before die close or after die close |
| | Multi-group hydraulic cores(up 200t) |
| | Central auto grease lubrication with pressure alarm sensor |

| 压射系统 | INJECTION SYSTEM |
|---------------------------|---|
| 四级压射控制功能 | Four-stages injection control function |
| 无浮动活塞设计结构压射系统 | Injection system adopts no floating piston design |
| 最大前冲速度后冲速度选择功能<= 15ms | Max dry injection speed >=8m/s,Pressure building time <= 15ms |
| 两种增压触发方式,压力触发与位置触发 | There are two intensification activation ways—pressure and position |
| 压射系统采用欧式拉杆结构,中心及偏心多位置压射选择 | Injection system adopted Euro standard design with multi injection position select function |
| 大流量高速压射功能 | Large flow logic fast speed function of injection and intens |
| 机械式精密手轮调节控制 | Mechanical hand wheel control |
| 接近开关控制压射行程 | Injection stroke control by proximity switch |

| 液壓系統 | HYDRAULIC SYSTEM |
|--------------------|---|
| 美国威格士高低压双联泵系统 | High and low pressure dual-pump system(Vickers) |
| 高响应压力/流量比例控制系统 | High response proportional control system of pressure and flow |
| 可靠耐用的力士乐、威格士液压元件, | Reliable and durable hydraulic components of famous brand(Hextoth,Vickers), |
| 意大利马努力高压软管 | Italy Manuli high pressure hose |
| 多级压力、速度控制功能 | Multi-stage pressure and speed control function |
| 系统压力、压射压力、蓄能器氮气压力、 | Pressure indication function of system pressure、injection pressure、 |
| 蓄能器工作压力指示功能 | accumulator.Nitrogen pressure and accumulator.intens.pressure |
| 油泵自封式吸油过滤装置 | Pump self-styled oil-suction filter |
| 油箱液位显示与报警功能 | Oil level display and alarm function |
| 油温表显示功能 | Oil temperature indicator |

| 控制系統 | CONTROL SYSTEM |
|--------------------|---|
| 德国西门子PLC与触摸屏控制系统 | Siemens PLC(S7-200) and touch screen (7")control system |
| 可靠耐用的国外名牌电器元件 | Reliable and durable electric components(Schneider,Omron) |
| 欧规CE标准主电源开关与信号连接插头 | Euro CE standard main power switch and signal connecting plug |
| 风扇冷却电控箱 | Electric cabinet with cooling fans |
| 模具参数存储读取功能 | Mould parameter save and read function |
| 详细的警报记录与警示功能 | Detail alarm message record and warning function |
| 循环周期与生产管理信息统计功能 | Cycle time and Production management statistic function |

| 机器外观 | MACHINE APPEARANCE |
|---------------------|---|
| 非多种金属封闭安全防护门装置 | Not a complete and close door for safety equipments |
| 机器标准颜色(灰色,白色和蓝色)可选择 | Machine standard color (Gray,white and blue)can be changed free |

C/M SERIES OPTIONS C/M系列选配装置

| | |
|------------------|--|
| 自动冲头润滑系统(油式、颗粒式) | Auto plunger lubrication (oil type or shot bead type) |
| 液压保险 | Hydraulic safety device |
| 电动前、后安全门 | Auto electric front side or back side safety door |
| 大空间防护门或者落地式防护门 | Big space safety door or floor-standing safety door(big mould) |
| 电箱空调冷却 | Electric cabinet cooling with air conditioner |
| 锁模油压显示功能 | Mold locking oil pressure display function |
| 油温显示界面与报警功能 | Oil temperature interface and alarm function |
| 蓄能器自动泄压功能 | Accumulator auto discharge pressure function |
| 压射行程电磁尺控制功能 | Injection storke control by electromagnetic tranducer |
| 模具局部增压功能 | Mould local pressure intens function |
| 自动调模系统 | Auto die height adjustment (no suggest) |
| 伺服阀压射实时控制系统 | Real time control system with servo valves of inject unit and Siemens S7-300 PLC |
| 高精度PPS曲线系统 | Position,Pressure & Speed curve display system with 10"screen |
| 10"高分辨率显示屏 | Siemens 10" touch screen(big machine) |
| 自动抽拉杆装置 | Auto tie bar (1pc) extraction device(big machine) |
| | Mould support device(big machine) |
| | Mould quick change system(big machine) |

| H SERIES STANDARD UNIT H系列標準裝置 | 鎖模系統 | MOLD CLOSING SYSTEM |
|--------------------------------|-----------------|---|
| 快速抽模裝置 | 開合模線性位移傳感器控制 | Linear position moving sensor control for mold open and close |
| | 合模低壓模保功能 | Low pressure mold protection function for mold clamping |
| | 液壓馬達驅動調模裝置 | Hydraulic motor drive mold adjusting mechanism |
| | 一組中子(抽、插芯)裝置 | One group hydraulic core pulling (pull & insert core) device |
| | 活動模板導柱含油軸承 | Guide post oiliness bearing of moving mold board |
| | 液壓多次及多級行程頂出設定功能 | Multi-step and multi-time stroke lift out setting function |
| | 自動潤滑系統/故率檢測報警功能 | Automatic lubrication system/trouble detect alarming function |
| | 產品自動檢出系統 | Product automatic detection system |

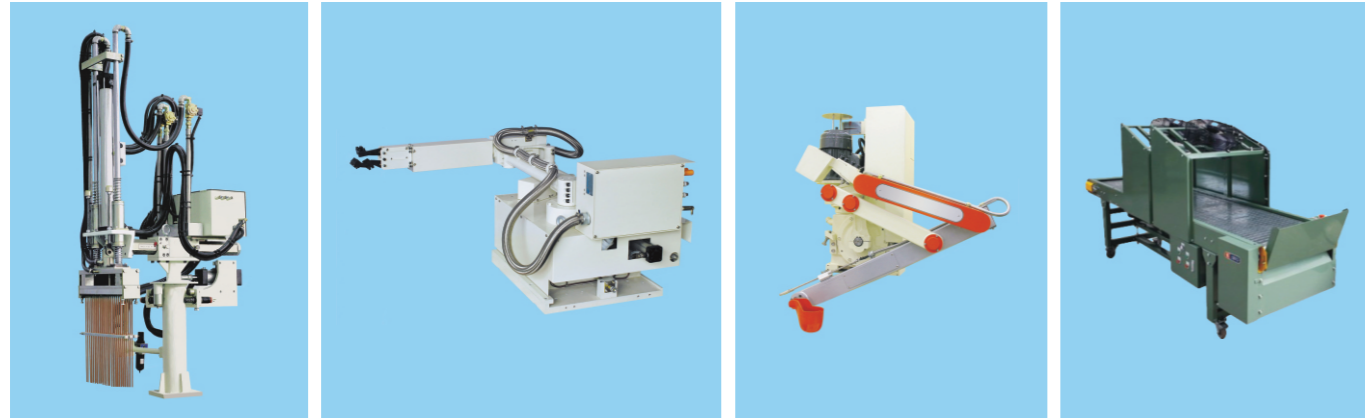
| 液壓系統 | HYDRAULIC SYSTEM |
|----------------|---|
| 獨特創導快速壓射裝置 | Distinguished created quick press-injection mechanism |
| 兩級壓射控制功能 | Two-step press-injection control function |
| 中子壓力/流量單獨設定功能 | Independent setting function of neutron pressure /flow |
| 高響應壓力/流量比例控制系統 | High response pressure/flow proportional control system |
| 蓄能器氮氣壓力指示功能 | Nitrogen pressure indication function of accumulator |
| 蓄能器工作壓力指示功能 | Work pressure indication function of accumulator |

| 控制系統 | CONTROL SYSTEM |
|-------------------|--|
| 工藝參數輸入/輸出動作屏顯檢索系統 | Technical parameter input/ output motion screen display retrieval function |
| 成型周期/產品成品統計功能 | Forming period/ qualified product statistics function |
| 運行異常/狀態警示功能 | Abnormal running/condition warning function |
| 機器前、後防護門安全裝置 | Safe device of front and rear protection doors of the machine |

| 加熱系統 | HEATING FUNCTION |
|--------------------------|---|
| 實時壓鑄流道溫度控制 | The temperature control of live die casting flow way |
| 壓射溫度保護功能* | Protection function of press-injection function |
| 節能型熔化爐(可選配燃油、燃氣、電能等加熱裝置) | Energy-saving welter (power, fuel ,gas are available) |

| H SERIES OPTIONS H系列选配装置 | |
|--------------------------|------------------------------------|
| 自动模具喷涂系统 | Auto sprayer system with four head |
| 自动铸件推落系统 | Auto castings sweeper down system |
| 天然气熔化炉 | Gas melting furnace |

AUXILIARY DEVICES 配套辅机



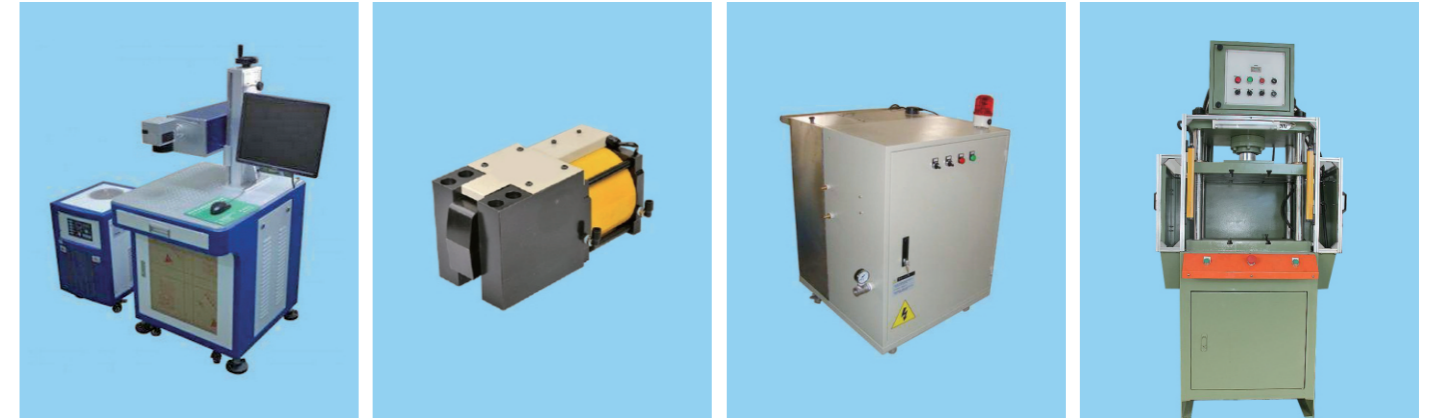
自动喷雾机
Auto sprayer

自动取出机
Auto extractor

自动给汤机
Auto ladler

自动传输带
Auto conveyer

AUXILIARY DEVICES 配套辅机



打标机
Marking machine

夹模器
Fast die clamping device

配比机
Mixer

切边机
Trimming machine



真空机
Vacuum machine

融化炉
Melting furnace

油压切边机
Hydraulic trimming machine

模温机
Mould temperature controller



离型剂混合机
Release agent mixer

冷水机
Cooling chiller

机器人
Robot

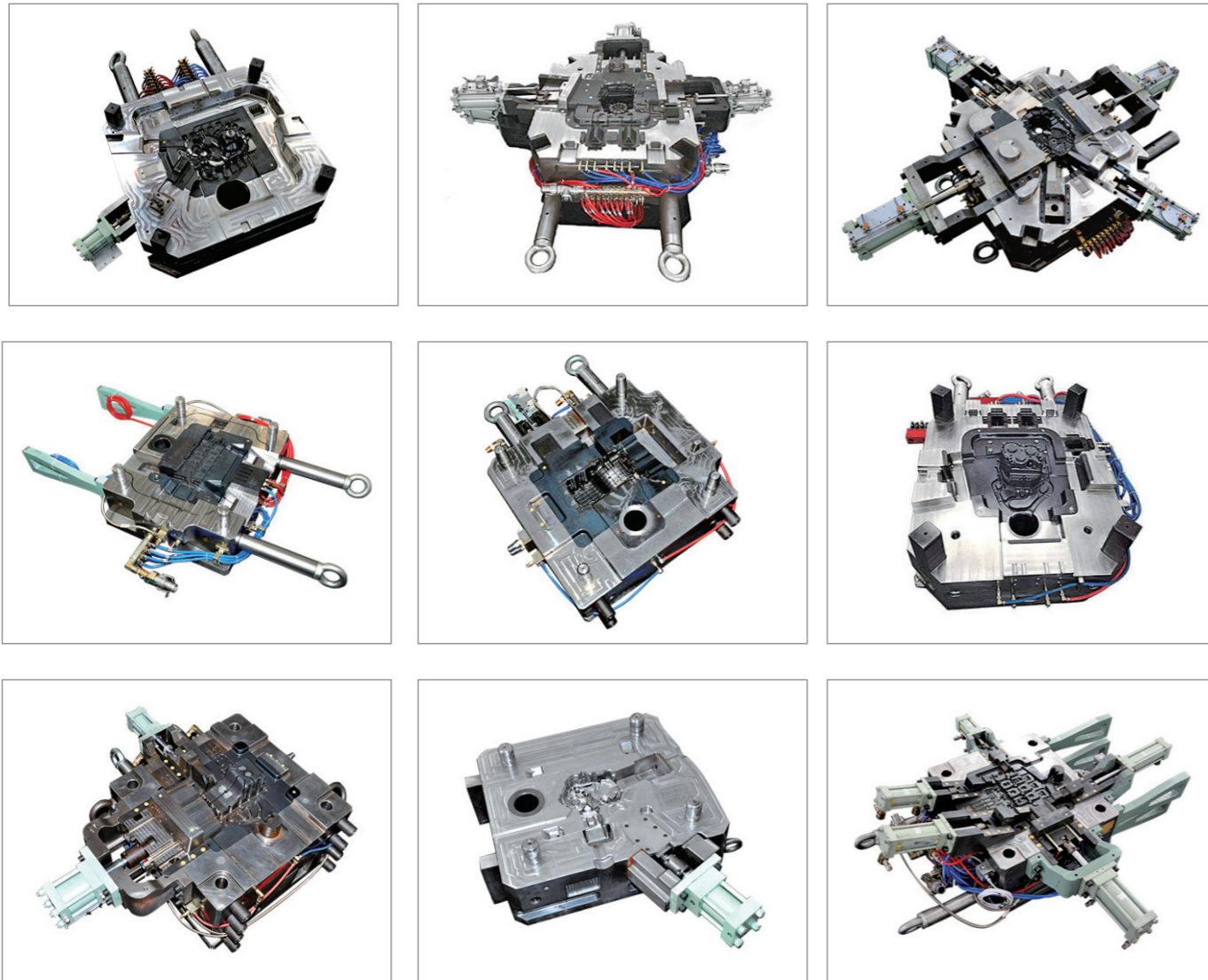
取出喷雾一体机(热式)
Sprayer extractor combine(Hot chamber)



合模机
Die spotting press

DIE CASTING MOULDS 压铸模具

汽车配件模具
Auto parts mould

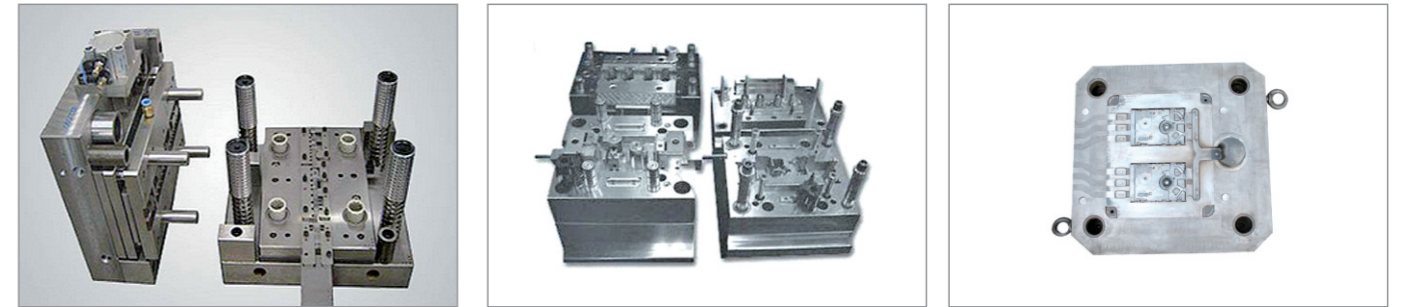


发动机外壳模具
Car starter engine
housing mould



DIE CASTING MOULDS 压铸模具

通讯部件模具
Communication
components mould



LED路灯压铸模具
LED street light
die casting mould



日用品压铸模具
Commodity
die casting mould

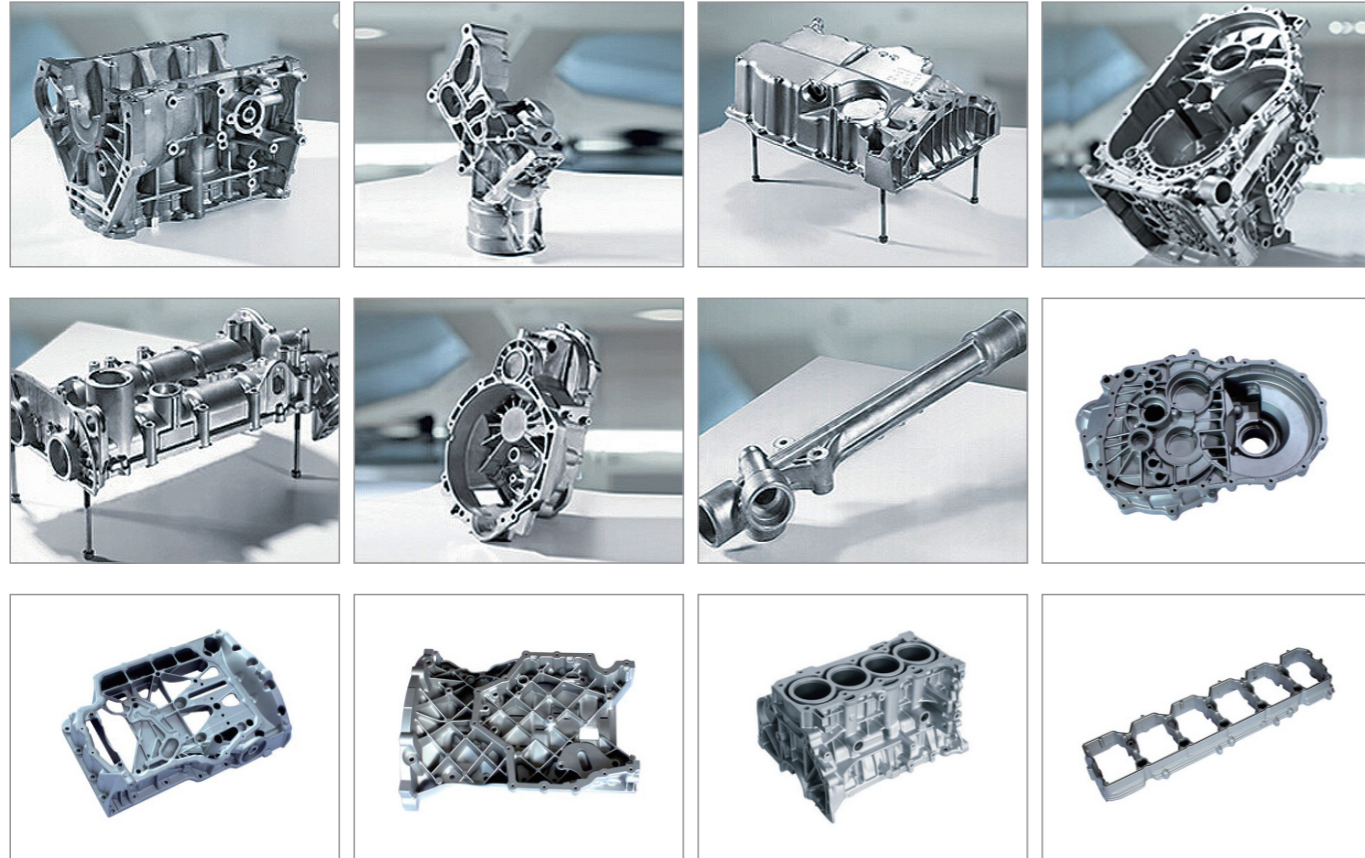


通机产品模具
General mechanical
components mould

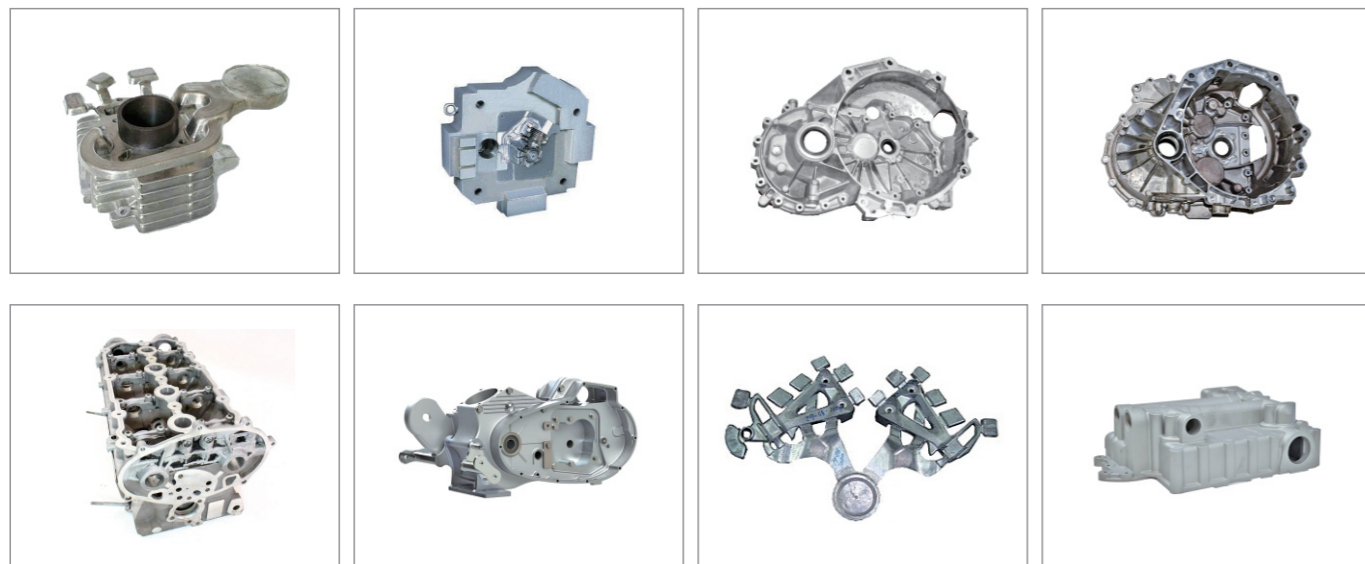


DIE CASTING PRODUCTS 压铸产品

汽配压铸产品
Die casting products
of auto parts

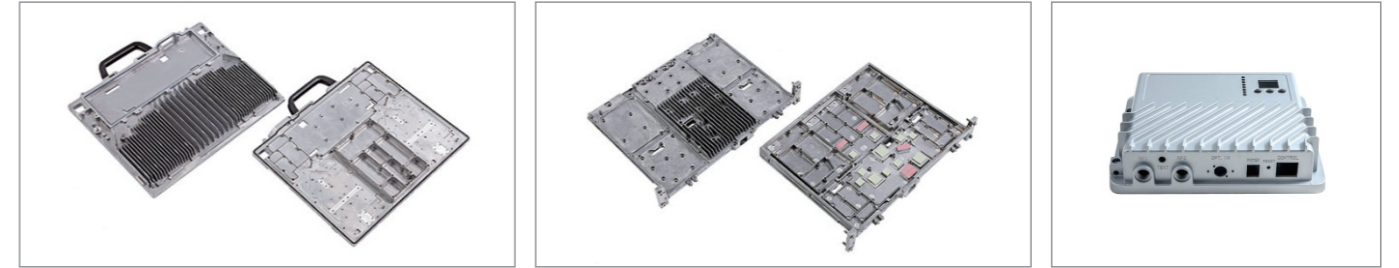


发动机外壳铝压铸件
Aluminum die casting car starter
engine housing components

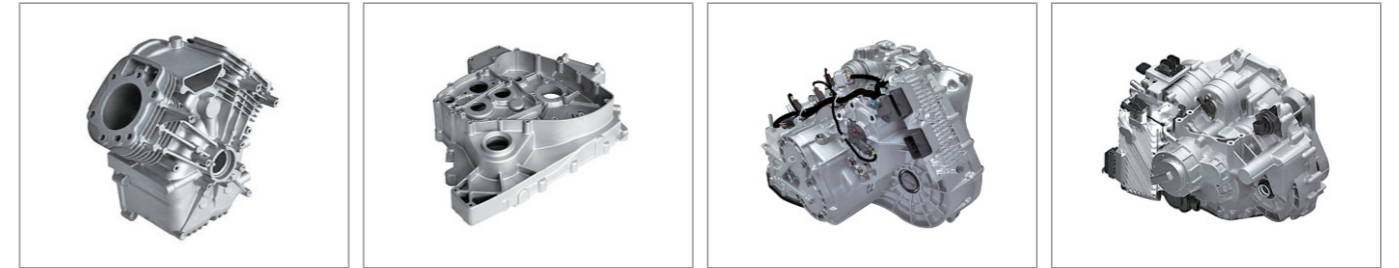


DIE CASTING PRODUCTS 压铸产品

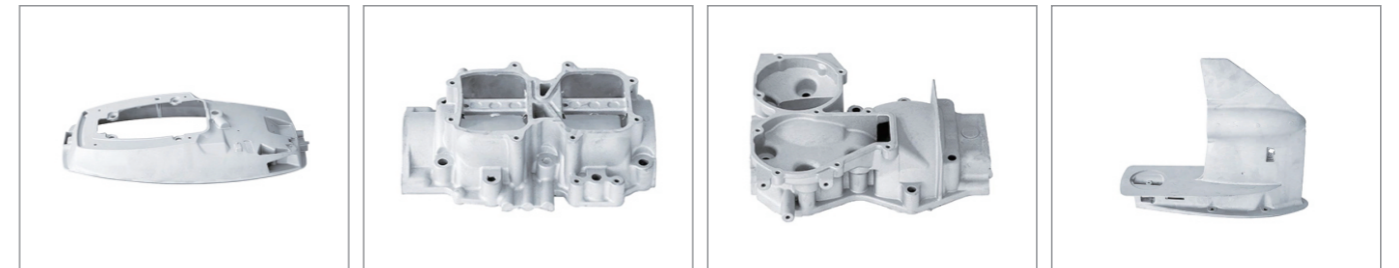
通讯部件压铸产品
Die casting products of
communication components



通机压铸产品
Die casting product of general
mechanical components



精密铝材舷外发动机压铸
Precision aluminum material
outboard engine die casting



电力附件铝压铸件
Aluminium die casting parts
electrical power accessories

