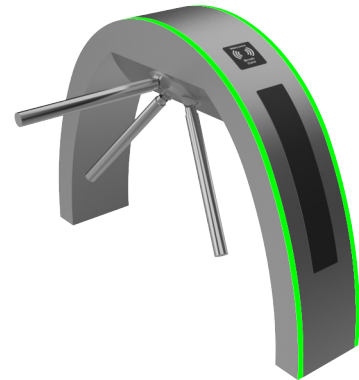


SUS304 Stainless • Semi or Fully Automatic capabilities •
IPX4 Protection • 5 Year Warranty • 10+ Years' Experience.

Introduction

The whole framework of standard tripod turnstile series made with SUS304 1.5-2.0mm stainless steel. Thus, it is rustproof and durable. All structures mostly a cuboid framework. The arms provide people with a civilized transit manner.

The turnstile can be set to be always open in an emergency, thus, allow unhindered passage.



SSI-1111

Technical Specifications

General Specifications

Start-up Time	3s(semi-automatic),8s(full-automatic)
Time to open Gate	0.2 seconds
Direction	Single or bidirectional
Working environment	Indoor or outdoor
Ingress Protection	IP45
Pass speed	30~35 persons/minute
Operational life	>3 million
Working temperature	Indoor/outdoor (with a tent over) -10°C—50°C Relative humidity: ≤90%, no condensation
Communication Interface	RS485, TCP/IP.

Physical

Dimensions	1400mm x 280mm x 980mm
Housing Material	SUS304 1.5-2.0mm stainless steel optional to use SUS316L
Weight	100 kg / 220 lb
Input interface	Dry contact signal or +12V level signal or DC12V pulse signal with a width of more than 100ms. Driving current: > 10mA

Electrical

Working voltage	AC110/220 ±10% V/50 ±10% HZ (specify when ordering)
Electronic motor	Brushless motor 24V 40W with fully auto option
Power Consumption	3A

Extra

Options.	SUS 316, Powder coating finish, coloured style for LEDs or. User RFID reader fitting cradle.
----------	--

Standard Functionality

- » Alarm Function.
- » Passage width 600mm
- » High visible LED direction arrow plate.
- » Swipe card memory function.
- » External long-range management and control via computer.
- » Optional with Face detection biometric.
- » Five-year warranty.

CAD Dimensions

