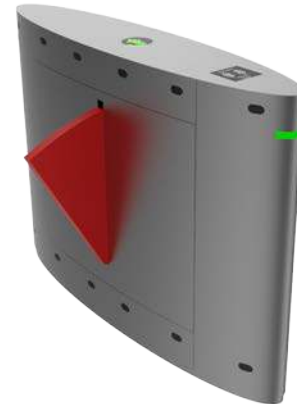


SUS304 Stainless • Semi or Fully Automatic capabilities • IPX4 Protection • 5 Year Warranty • 10+ Years' Experience.

Introduction

The flap turnstile is made using SUS304 1.5-2.0mm stainless steel. Thus, it is rustproof and durable. It has a cuboid framework structure.

The flaps provide a hindered free passage for authenticated users.



SSF-2100

Technical Specifications

General Specifications

Start-up Time	3s(semi-automatic),8s(full-automatic)
Time to open Gate	0.2 seconds
Direction	Single or bidirectional
Working environment	Indoor or outdoor
Ingress Protection	IP45
Pass speed	30~35 persons/minute
Operational life	>3 million
Working temperature	Indoor/outdoor (with a tent over) -10°C—50°C Relative humidity: ≤90%, no condensation
Communication Interface	RS485, TCP/IP.

Physical

Dimensions	1400mm x 300mm x 980mm
Housing Material	SUS304 1.5-2.0mm stainless steel optional to use SUS316L
Weight	100 kg / 220 lb
Input interface	Dry contact signal or +12V level signal or DC12V pulse signal with a width of more than 100ms. Driving current: > 10mA

Electrical

Working voltage	AC110/220 ±10% V/50 ±10% HZ (specify when ordering)
Electronic motor	Brushless motor 24V 40W
Power Consumption	3A

Extra

Options.	SUS 316, Powder coating finish, coloured style for LEDs or. User RFID reader fitting cradle.
----------	--

Standard Functionality

- » Alarm Function.
- » Passage width 600mm or 900mm for disabled access
- » High visible LED direction arrow plate.
- » Swipe card memory function.
- » External long-range management and control via computer.
- » Optional with Face detection biometric.
- » Five-year warranty.

CAD Dimensions

