

POWER INVERTER

RG-HC SERIES



Smart Control

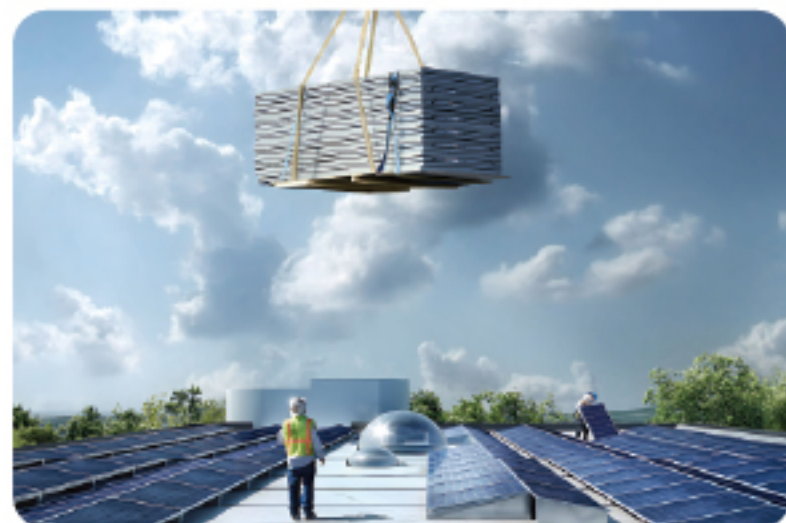
- Three smart control mode,auto switch for different demand

Stable & Durabel

- Inbuilt toroidal transformer,triple surge power,stabize power, stable and durable

Battery Type

- Support SLA/GEL/AGM battery



MODEL	RG-HC1000W	RG-HC1200W
Rated power	1000W	1200W
Surge power	3000W	3600W
	AC Input & Output	
Voltage	220VAC	
Selectable Voltage Range	145-275VAC(220VAC)	
Frequency Range	50Hz/60Hz automatic recognition	
AC Voltage Regulation (BATT.Mode)	(DC Batt.mode) 220vac±3%	
Transfer Time	≤8ms	
Wave Form	Pure Sine Wave	
Transformer type	Toroidal	
Transfer efficiency	≥85%	
	Battery	
Battery Voltage	12V./24V	
Type	Ge/SLA/AGM/Water battery	
DC Charge Voltage	13.8VDC(12V)/27.6VDC(24V)	
Overcharge Protection	Battery voltage≥16VDC(12V)≥32VDC(24V),stop charging after 60s alarm	
	Solar Charger & AC Charger	
Maxium PV Array Open Circuit Voltage	Max.25V(12V)/50V(24V)	
Maxium PV Array Power	20A:280W/560W(12V);30A:420W/840W(24V)	
Maximum Ac Charge Current	15A	
Maximum Solar Charger Current	30A PWM	
	Working mode	
01 mode	AC priority mode	
02 mode	ECO mode	
03 mode	Battery priority mode	
04 mode	Unattended mode	
	Physical	
Dimension, D*W*H(MM)	290x258x125	
N.W.(KGS)	7.8	8.4
	Environment	
Humidity	0~95%(NO CONDESNSATION)	
Poerating Temperature	0~60℃	
Storage Temperture	0~60℃	
*Product Specifications Are Subject To Change Without Further Notice		