

# RETRACTABLE LOUVER PERGOLA

Finished Products



Foshan CAYOE Building Material Co.,Ltd

YOUR OUTDOOR SHADING SYSTEM MATERIALS SUPPLIER





## ENTERPRISE OVERVIEW

The headquarters of Guangdong Foshan CAYOE Building Materials Co., Ltd. is located in Foshan, Guangdong, known as the "Capital of Aluminum Materials". We are an all aluminum application service provider that integrates research and development, design, production, sales, and technical services.

Our company has strong capabilities: covering a total area of over 20000 square meters, with over 100 employees, including more than 20 senior engineers and technical personnel. Our annual production capacity exceeds 30000 tons. The company has 5 aluminum extrusion production lines, a 2000 ton spot warehouse, and an outdoor construction product processing plant, aiming to drive positive production expansion through market expansion, optimize regional layout, and build a global marketing network.

Was Established

**2006**

Factory Area

**20,000 +**

Annual Output

**30,000 t**

Spot Reserve

**2,000 t**

Export Countries

**30 +**

## FACTORY DESCRIPTION

### Extrusion Workshop

We have 5 extrusion production lines specifically designed to meet the needs of large aluminum materials for outdoor shading systems, to ensure customer customization needs.

### Color Workshop

In order to facilitate customized color requirements for our partners, the factory will build its own spraying production line and oxidation generation line in 2022 to timely meet the market's demand for colors.

### Spot Warehouse

The factory has a stock warehouse of 1000 tons of outdoor sunshade products, including aluminum, accessories, electronic systems, etc., to meet the standards of fast delivery. At the same time, assist customers in a one-stop procurement of all materials and hardware accessories required for outdoor shading systems in the shortest possible time.



**intertek**  
Total Quality. Assured.





## Becoming Our Partner Has Three Major Benefits

- You can get local orders without advertising.
- You will be the first to know which products are more popular in the local market and which ones have higher demand.
- We will provide you with finished products, materials, accessories, processing equipment, and technical support based on the market data of the product. Whether you are an agent or a manufacturer with processing capabilities, we can help you provide hot selling products needed in the local market.

Enable users to obtain better products & Enable partners to achieve higher profits & Let us have more innovative abilities ourselves

**Aluminum Carving Fence**  
Size: Length 1.8m-2.0m, Height 1.2m-3.0m

**CAYOE**  
BETTER FOR THE FUTURE  
**COLLABORATION MODE**

1 2 3

f i YouTube

1

**Our outdoor sunshade product supply is divided into two types:**

- Finished Product
- Materials / Accessories / Processing Equipment

**We promote the finished product effect and material display in the form of videos on social media.**

2

**Collect relevant information on social media:**

Preference data for products and orders | User feedback on the product | Market positioning of the product

3

**Based on the collected social media data, we assess market demand and buyer preferences. And provide the collected terminal orders to our overseas local partners for local sales and after-sales service.**





**FACTORY CUSTOMIZATION, SUPPORTING OEM/ODM**

System | Materials | Accessories | Equipment

## 300 / 170 Series Retractable Louver Pergola



Retractable  
Blade



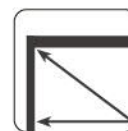
Sunshade  
Cooling



Rainproof  
Waterproof



Resistant Wind  
and Snow



Large Size  
Large Span



Phone APP  
Controlled

## STANDARD COLORS



**Matte White**  
RAL 9016



**Matte Black**  
RAL 9005



**Matte Grey**  
RAL 7016



**Mixed Colors**  
Solid Color / Wood

## CUSTOMIZED COLOUR

Fully automatic surface treatment production line  
Support small or large batch customization

## ■ Retractable Louver Shading

Large-span aluminum alloy retractable louver pergolas feature enhanced shading systems tailored to their size, enabling flexible light and environment control over large areas:

- Wide-range adjustment: Louvers (fitting spans of 6-10m) adjust synchronously via electric systems, rotating 0°-90°—fully closed to block wind/rain/sun, partially open to filter glare, or fully retracted to maximize ventilation and openness.
- Smart control: Equipped with sensors (light, wind, rain) for automatic adjustment; supports app/centralized control for remote or zoned management in complex commercial settings.

## ■ Materials and Craftsmanship

Designed for wind resistance, fatigue resistance, and longevity to handle large spans:

- High-strength materials: Frames use 6061-T5 aluminum alloy with cold-drawing for 30% higher bending strength, withstanding level 12+ winds. Louvers are 2.5-3mm thick aluminum with reinforced hollow structures to resist deformation.
- Precision engineering: Frames connect via tenon-and-mortise joints with high-strength bolts for even weight distribution. Dual-track rails with durable nylon pulleys ensure smooth movement. Industrial-grade waterproof motors (supporting over 165kg/㎡) with overload protection handle heavy use.

## ■ Commercial Applications

Ideal for large outdoor commercial spaces:

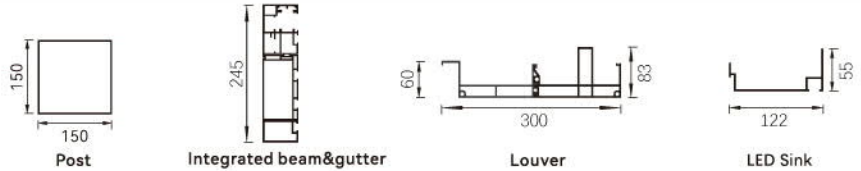
- Mall plazas: Cover 100-300 ㎡ as leisure/dining areas by day; close to host events at night.
- Scenic spots/campsites: Accommodate groups, adapting to sunlight changes while withstanding harsh environments.
- Corporate parks/stadiums: Serve as outdoor work/relaxation zones, shading sports areas from sun/rain.
- Hotels/resorts: Cover pools/terraces, reducing glare by day or closing for private events like weddings.
- Private courtyards and terraces: Serving as the core leisure area in the courtyard, it can be paired with outdoor furniture to create a private resting space. It provides shade during the day, and when the louvers are closed at night, it forms a private "small living room" and can even be equipped with a lighting system to meet the needs of night gatherings.
- Swimming pools and recreation areas: Pavilions by the pool can adjust the louvers to avoid water glare caused by direct sunlight, block strong afternoon light to make pool activities more comfortable, and with waterproof design, they can serve as temporary shelters on rainy days.
- Office and public spaces: In corporate parks, parks, squares, and other areas, they can function as open rest pavilions. The flexible adjustment of louvers can adapt to the lighting and crowd needs of different times, combining functionality and landscape appeal.



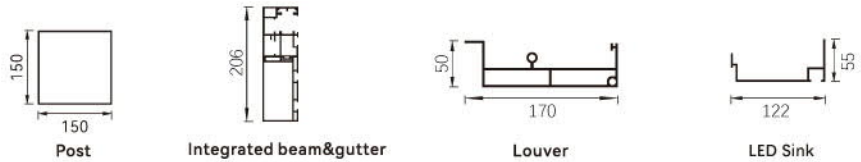


## PERGOLA SPECIFICATIONS

### 300 Series Material Parameters



### 170 Series Material Parameters



### Motor

Input Voltage:DC24V 120W  
Current at rated load:1.8A  
rated load :800N  
Speed at rated load:7m/s  
Water Resistance :IP67  
Usage Temperature : -20°C -60°C  
Noise level at rated load : $\leq 53$  dB



Opening Area : 65-70%

### LED Light Strip

Input Voltage :DC24V  
Current Power:2\*6 W/m  
Color: 3000K yellow+6000K white  
Water Resistance : IP65  
LED specification :SMD/2835  
Lamp No. :192 pcs/m

## SMART CONTROL SYSTEM

### Voltage

Input Voltage:100V -240V AC /50/60hz  
Output Voltage:DC24V  
Power :250W/300W

### Smart Transformer

Input Power:24 VDC  
Motor For Louver :24V DC/\*2  
Motor current : 1.8A\*1/1.8A\*2  
Remote Frequency :868.35hz

### Zip Screen Control System

Input Voltage :110V/220V  
Output Voltage:110V/220V AC

### All In-One Remote

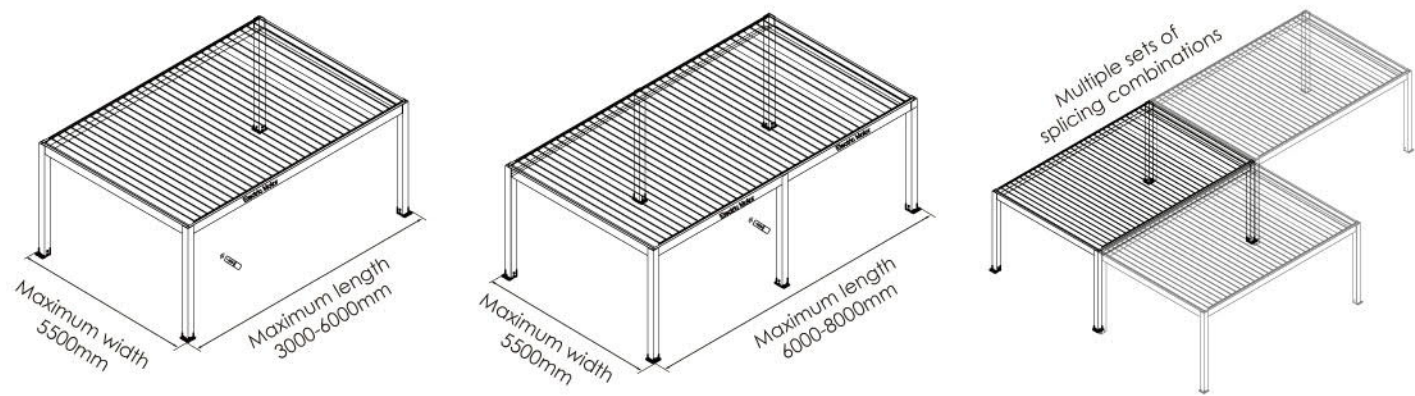
Louver Motor :channel No.1  
Zip Screen:channel No.2 -No.7  
Lighting: Independent Control

# CAYOE FINISHED LOUVER PERGOLA SERIES

## Product Differences

Pergola Series				
	<b>300 Series</b> Retractable Louver Pergola	<b>170 Series</b> Retractable Louver Pergola	<b>C7 Series</b> Flip Louver Pergola Room	<b>200 Series</b> Flip Louver Pergola
Blade Specifications	Aluminum alloy 300mm wide blade	Aluminum alloy 170mm wide blade	Aluminum alloy 193mm wide blade	Aluminum alloy 200mm wide blade
Pergola Top	Retractable Louver Top Opening Area: 65%-70%	Retractable Louver Top Opening Area: 60%-65%	Flip Louver Top Flipping Angle: 100°	Flip Louver Top Flipping Angle: 90°
Top load-bearing capacity	165kg/ m <sup>2</sup>	150kg/ m <sup>2</sup>	140kg/ m <sup>2</sup>	135kg/ m <sup>2</sup>
Drive Mode	Electric control or Hand crank control	Electric control or Hand crank control	Electric control	Electric control or Hand crank control
Motor Type	Gear motor	Gear motor	Push rod motor	Push rod motor
Control Mode	Remote control Wall switch Mobile APP	Remote control Wall switch Mobile APP	Remote control Wall switch Mobile APP	Remote control Wall switch
Rain & Snow Protection	✓	✓	✓	✓
UV Protection	✓	✓	✓	✓
Lighting System	Blade: — Water trough: LED/RGB light strip		Blade: LED/RGB light strip Water trough: LED/RGB light strip	
Column Specifications	150*150*3.0mm 200*150*3.0mm	150*150*3.0mm 180*180*3.0mm	150*150*3.0mm	150*150*3.0mm
Optional Configuration	<ul style="list-style-type: none"> <li>· Wind-resistant roller shutter</li> <li>· Aluminum louver door</li> <li>· Glass sliding door/window</li> <li>· Glass folding door/window</li> <li>· Glass fixed window</li> <li>· Aluminum grille</li> </ul>	<ul style="list-style-type: none"> <li>· Wind-resistant roller shutter</li> <li>· Aluminum louver door</li> <li>· Glass sliding door/window</li> <li>· Glass folding door/window</li> <li>· Glass fixed window</li> <li>· Aluminum grille</li> </ul>	<ul style="list-style-type: none"> <li>· Wind-resistant roller shutter</li> <li>· Aluminum louver door</li> <li>· Glass sliding door/window</li> <li>· Glass folding door/window</li> <li>· Glass fixed window</li> <li>· Aluminum grille</li> </ul>	<ul style="list-style-type: none"> <li>· Wind-resistant roller shutter</li> <li>· Glass sliding door/window</li> <li>· Glass folding door/window</li> <li>· Glass fixed window</li> <li>· Aluminum grille</li> </ul>

# Size Inspire



## Standard Size (m)

Width (m) Blade Length	Length (m) Span										
	3.0m	3.5m	4.0m	4.5m	5.0m	5.5m	6.0m	6.5m	7.0m	7.5m	8.0m
3.0m	170 Series										
3.5m											
4.0m											
4.5m	300 Series										
5.0m											
5.5m											

Customizable dimensions or multi-set Pergola splicing combinations.

# Installation Types





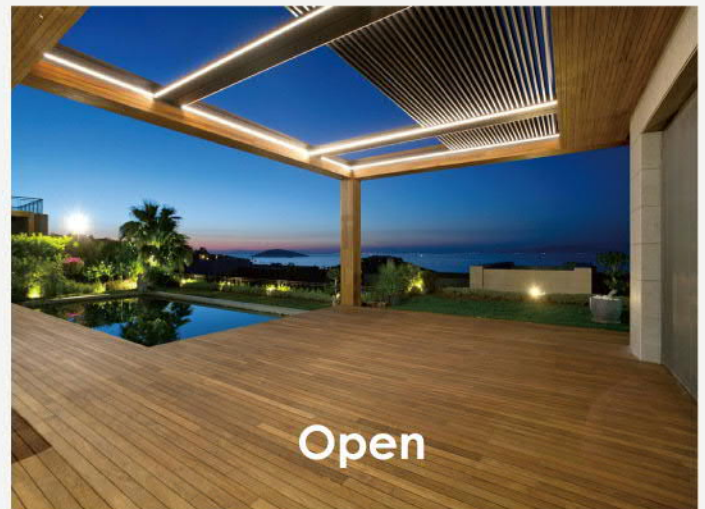
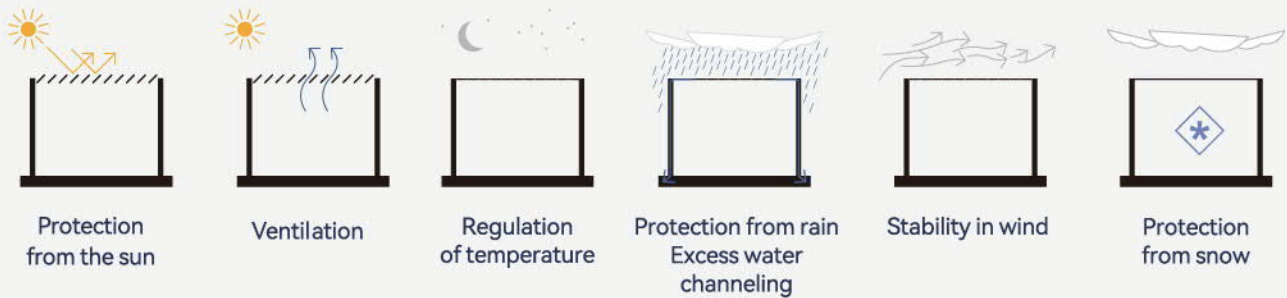
## Electric Control Or Manual Control



## Features

Regulate the temperature, Control sunlight  
Protect you from Rain & Snow extend the outdoor living space

intertek





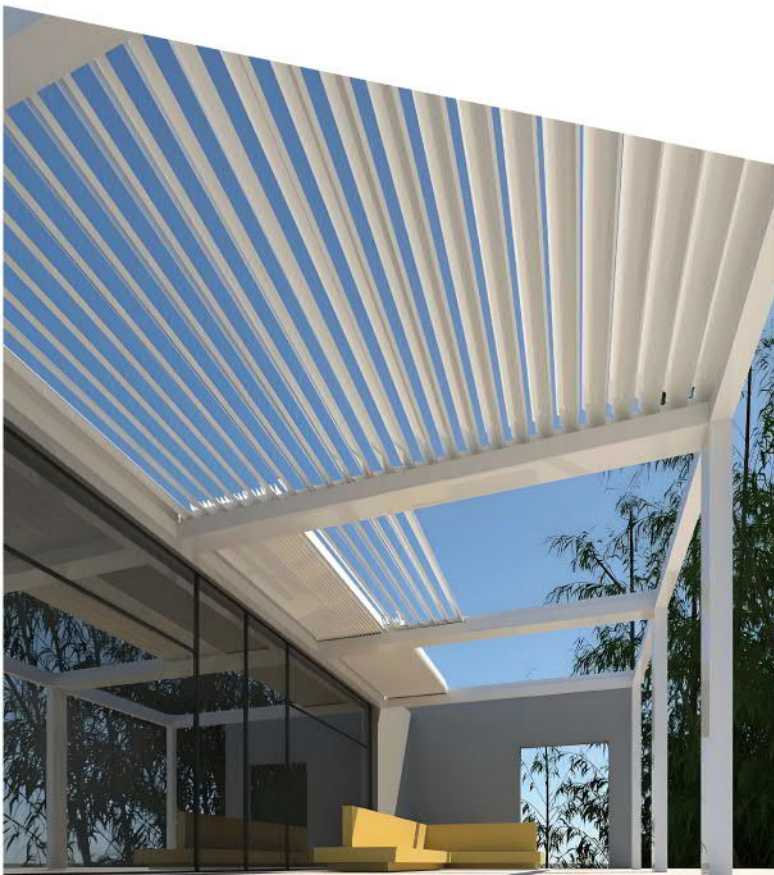
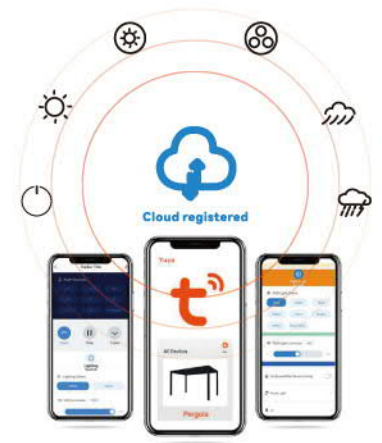
## Integrated Technology

# Innovation

We have developed a new generation of control system, which enables you to control all functions with just one remote control.

- Open and close and flip the louvers on the top.
- Turn on and off the LED lighting of the louvers on the top.
- Control the electric Zip Screen on the sides.

Meanwhile, you need to download the "TUYA" App, which will allow you to remotely control these functions via your mobile phone.



Remote Control or APP Control  
Retractable Shutter Opening / Closing

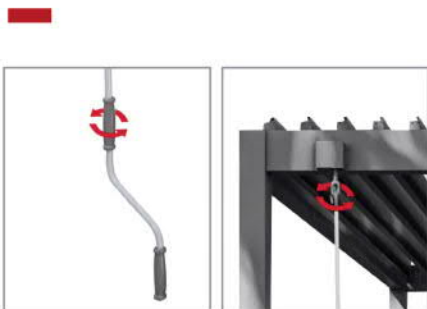


Remote Control or APP Control  
Windproof Roller Shutter Opening / Closing



Remote Control or APP Control  
lighting system

## Manual Control



When there is no circuit connection,  
Manual **opening** and **closing**  
can be selected



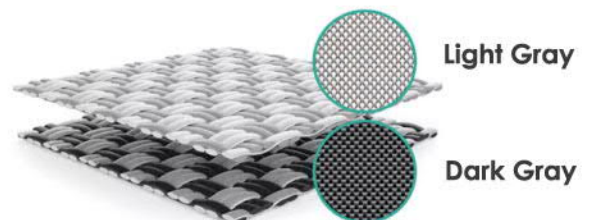


# Electric Windproof Roller Shutter

Windproof and fireproof materials  
Provide privacy protection  
But it does not affect the external perspective



The aluminum alloy frame track makes opening and closing more stable.  
The tubular motor is also hidden inside the top frame.



# LED LIGHTING SYSTEMS MAKE THE NIGHT ATMOSPHERE MORE PLEASANT

The area around the sink is equipped with LED light strips with a color temperature of 5000K, allowing normal use at night as if it were daytime.



RGB color-changing light strips are available  
Featuring stepless color changing  
and Multiple mode adjustments



**Fixed Shutters**



**Sliding Shutter Door**

The surrounding facades can also be matched with aluminum alloy glass sliding doors or folding doors.



# Excellent Drainage Design

Not only does it resist ultraviolet rays,  
but it also prevents water seepage even in heavy rain or snow.  
The 122mm-wide concealed water trough ensures smoother drainage  
and prevents rainwater splashing.

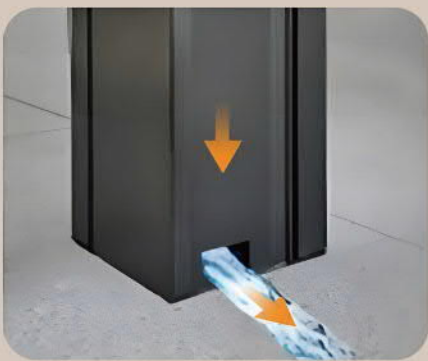
Rainwater flows into the beam gutters through the blade gutters



Drainage is directed out through the interior of the columns



Top drainage



Water outlets at the  
bottom of columns






# Thickened aluminum alloy material Optimize the load-bearing structure

Resistant to high **temperatures** and extreme **cold**

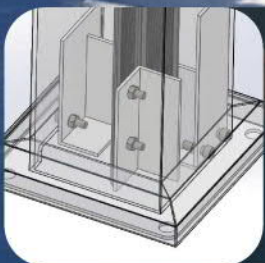
There is **no need to worry** about rain and snow cover in winter

Durable and non deformable, enhancing wind resistance

Stable and not shaking



Top load-bearing capacity: 165KG/m<sup>2</sup>  
The 5\*4m top can bear 3.3 tons.



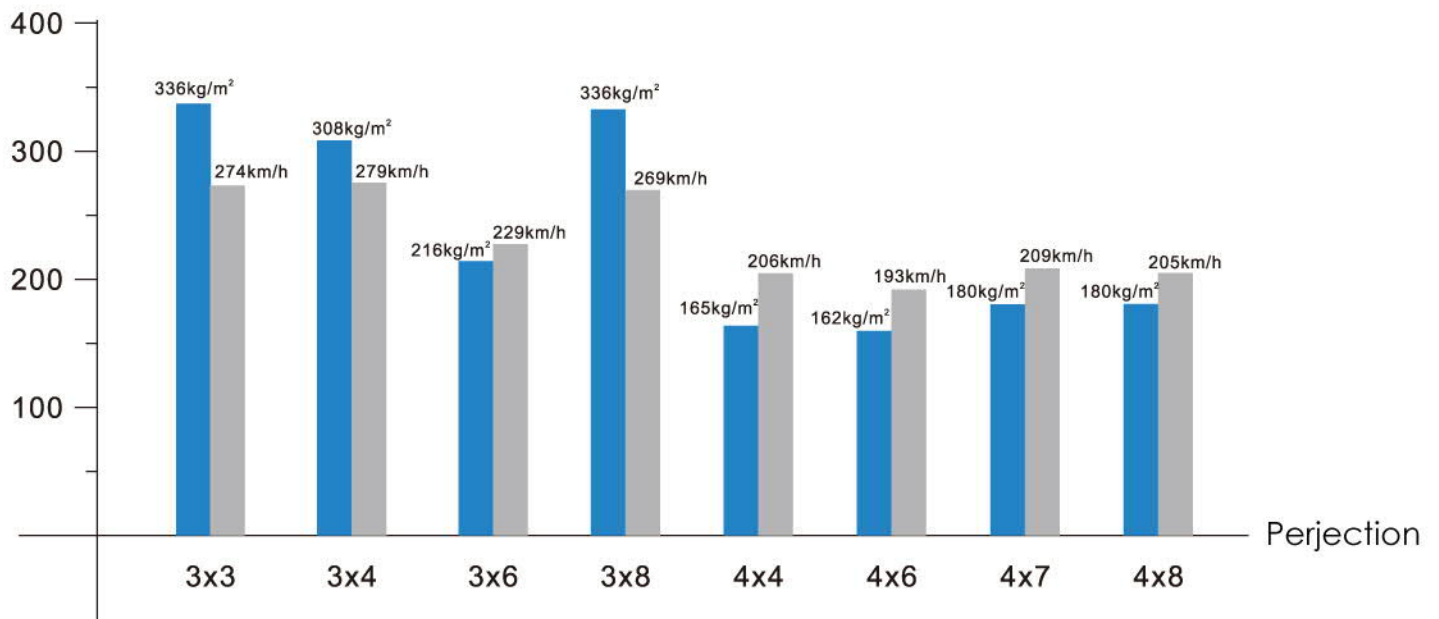
**Column specification: 150\*150\*3.0mm**

Columns have internal reinforcements connecting their base to top beams, making the pergola sturdier, more load-bearing and stable.



# Stronger Capacity

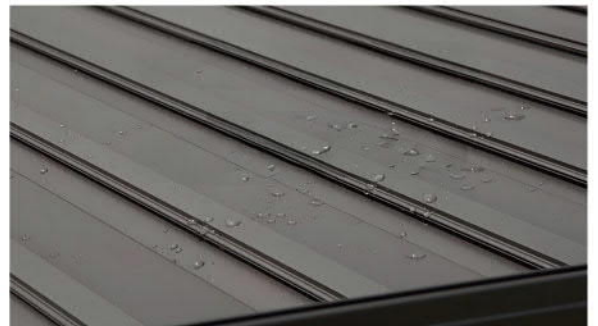
Wind/Snow  
Resistance



## How it work

### WHEN CLOSED

Compared to traditional PERGOLA, this model presents a more sleek and generous appearance, also exuding a more upscale and motorized advancedvibe.



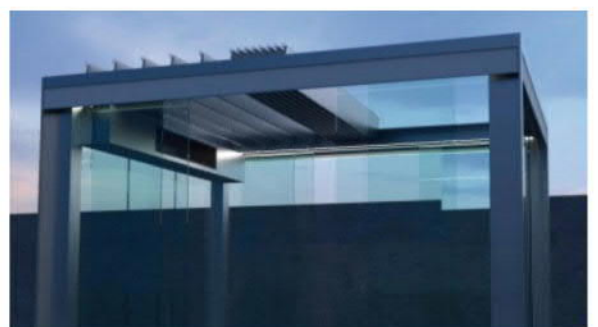
### ON OPENING

The blades are angled for optimal ventilation up to 70 degree. The blades can be opened or folded, offering a broader view and enhanced airflow, overcoming the traditional limitations of enclosed sunshades.

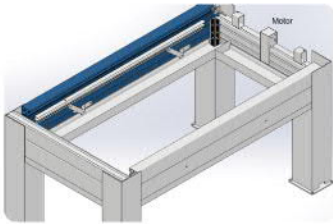


### WHEN FLODED

When folded, the blades automatically move to a fixed position. Besides the conventional shading function of large louvers, they can also fold and retract to one side, not occupying any space at all.

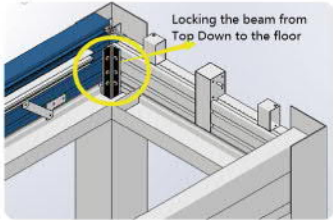


# Product Features



## **24V SAFE VOLTAGE/120W LOW POWER.**

Safe and easy for electrician approval.



## **USE ONLY ONE SINGLE SERVO MOTOR.**

No Lag, No Jamming, Worry-Free Maintenance.



## **SMART AUTO-PAUSE: INSTANTLY RESPONDS TO ANY LAG, WITH AUTO ADJUST MOTOR PROGRAM**

Avoids harm, and Auto-resumes once normal conditions return.



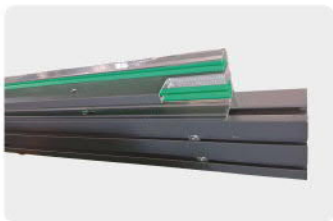
## **STAINLESS STEEL DRIVE SHAFT (NOT AN ORDINARY PLASTIC BELT DRIVE)**

Stable, Heavy-duty design. Prevents belt over heating and peeling.



## **HIGH QUALITY HARDWARE AND PATENTED STRUCTURE DESIGN.**

Quiet Operation.



## **ALL-LOCKING SCREW DESIGN WITH REINFORCED COMPONENTS PRE-EMBEDDED**

Save the labour cost.



## **THE COLUMN IS REINFORCED FROM THE BASE TO THE TOP AND TIGHTLY LOCKED WITH THE BEAM**

Featuring premium materials, a patented connection structure design, and outstanding stability Snow Loading/Wind Resistance Approval.



## **BETTER ENCLOSURE ON ROOFING**

All-weather Suitability.



# Why Choose Us

## 1 SINGLE MOTOR **VS.** MORE MOTORS

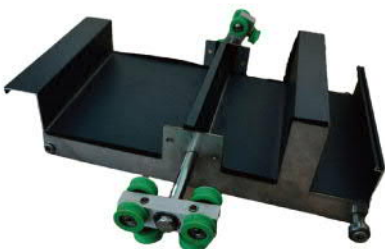


**OUR** motor automatically learns its travel path, requiring no adjustment. It stops upon encountering any obstacles, ensuring safety without worry. One single 24V Low-voltage Servo motor.

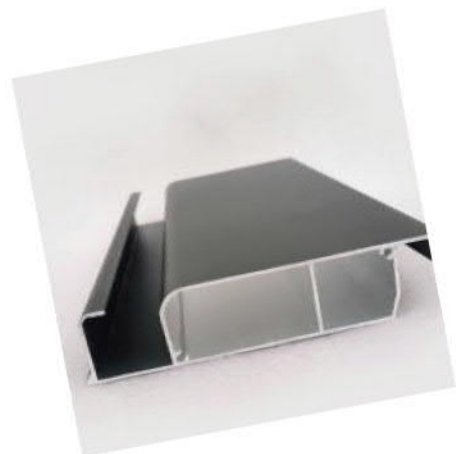


**OTHER** motors on the market require adjustment of their travel path, which is time-consuming, and lack the feature of stopping immediately upon encountering obstacles.

## WATERPROOF **VS.** LEAKING INSIDE



**OUR** multi-level drainage ensures rapid water going and prevents leakage. Louvre 1.6 mm thickness, comparing with other's 1.0mm thickness



**OTHER** drainage is simple, cause slow water going, which can easily result in a situation where "it's pouring outside, but drizzling inside."

# Why Choose Us

## QUICK-BUILT **VS.** ONSITE ASSEMBLY

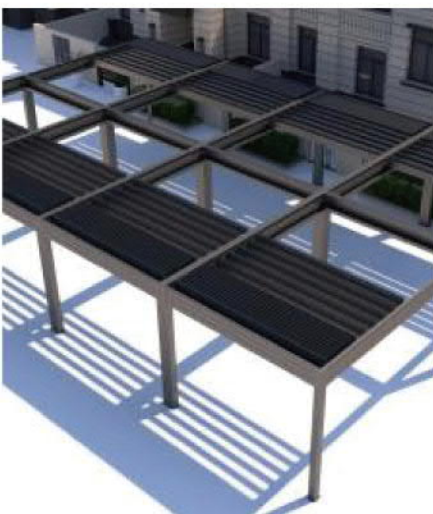


**Our** pergola Installation is simple with modular assembly, allowing for easy completion and saving labor time.



Installation from other factory is complicated, requiring on-site drilling. Even a slight mistake can result in installation failure.

## SILENT AND SMOOTH STRUCTURE **VS.** NOISY OPERATION



When closed, it provides protection against rain, snow and falling objects. When opened, it allows for stargazing, moon viewing and sunbathing.



The linkage is with rubber belt, resulting in a noisy running.



# Product Options



Sliding Glass Door



Zip Screen



Sliding Shutter Door



Folding Glass Door



Rain Sensor



Electrical Heater



Fixed Shutters



Folding Shutter Door

For more matching solutions, please contact CAYOE service staff and we will design a customized plan for you.



# Feedback From Customers





# Adequate Material Inventory

We have our own aluminum extrusion factory, stock warehouse, and finished product processing plant.  
The inventory of long-term spot materials maintains a turnover of **2000 tons**.  
We can ship regular color orders within **24 hours** at the fastest.



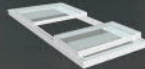
E-Sunroom



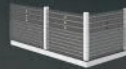
Louver Pergola



E-Folding Awning



E-Skylight



Alu Outdoor Fence



Minimalist Glass Guardrail



Electric Sunshade

## Pack & Ship





## OEM & ODM

# FOCUS ON OUTDOOR SUNSHADE BUILDING ALUMINUM PROFILE

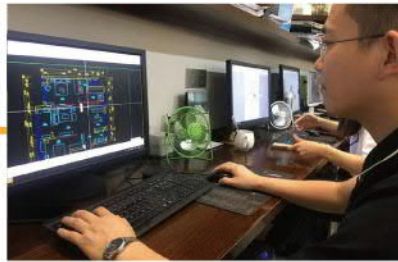
### Customization Process

CAYOE has implemented international advanced technologies with high automation in melting and casting aluminium bars mould development, profile extrusion, sandblasting, anodization, simple and complex salt coloring, electrophoresis coating, powder spraying, simulated wood grains, fluorocarbon spraying process. The product quality reaches international leading level.

### CUSTOMIZATION PROCESS



Inquiry-Communication  
Sample or CAD drawing



CAD drawing (Our company)  
Drawn Confirmation  
(Fastest completion speed 1 h)



Customized mold or choose  
common mold  
(Fastest completion speed 7-10d)



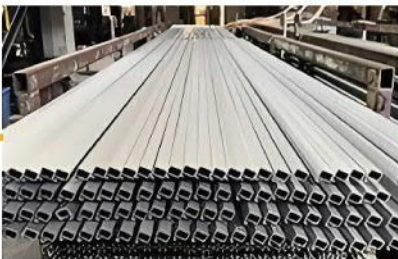
Start mass production



Check the formability  
Check all indicators



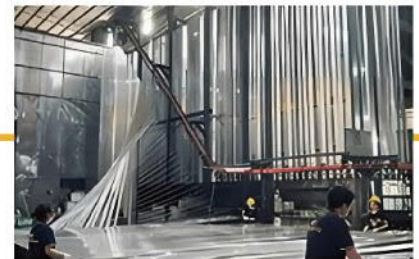
First compression test  
Testing aluminum molds



Cut length according  
to customer needs



Waiting for packaging  
Waiting for color processing



Process surface treatment according  
to customized requirements



On-time delivery  
and logistics tracking



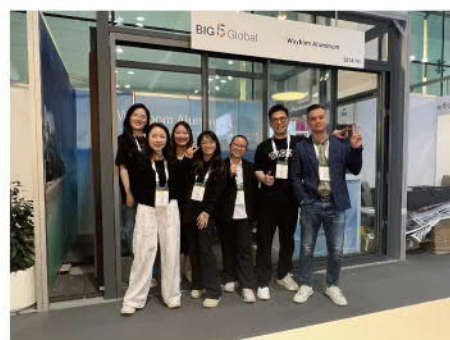
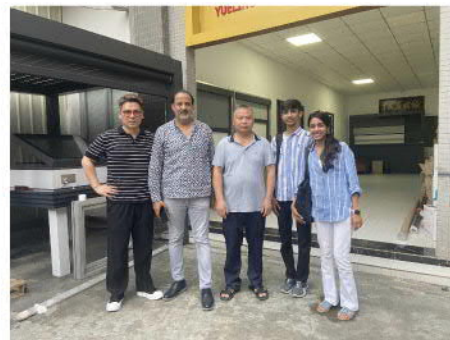
Packaging according  
to customer requirements



Check size, color  
and wall thickness



Customers from all over the world



We welcome and look forward to friends from all over the world to visit CAYOE.



Please share our products with more friends

Let the CAYOE product become a member of your favorites.







## RETRACTABLE LOUVER PERGOLA



## MOBILE SUNROOM



**Foshan CAYOE Building Material Co.,Ltd**  
YOUR OUTDOOR SHADING SYSTEM MATERIALS SUPPLIER



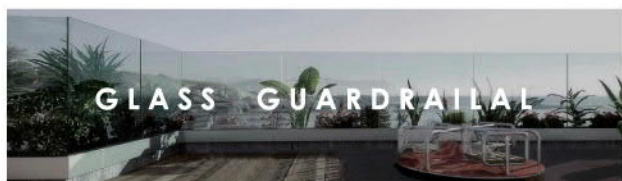
## ALU OUTDOOR FLOORING



## ALL ALUMINUM FENCE



## ELECTRIC ROLLER BLINDS



## GLASS GUARDRAIL

### Core Products

Sunroom Series  
Pergola Series  
Outdoor Flooring Series  
Outdoor Fence Series  
Glass Guardrail Series  
Grille Wall Panel Series  
Electric Sunshade Series



CONTACT US



[https:// www.fscayoe.com](https://www.fscayoe.com)



CAYOE Aluminum



cayoe.alu



[youtube.com/@CAYOE-Alu](https://www.youtube.com/@CAYOE-Alu)