

# TH-710A

專利號 / Patent No. : 201530022060.9



## 強力牆式壓底機

Heavy-duty Walled Sole Attaching Machine

### 主要特點 FEATURES

- ◆ 本機採用全油壓系統設計，適用於龍船底、牆式包底運動鞋，休閒鞋及其它包邊或包頭的鞋子，壓底、壓邊及壓前後可一次完成或個別完成，出力大、貼合牢固，除節省人工外，壓著均勻、效果佳。
- ◆ 上升油壓缸使用預充閥補充油量，可使操作上升動作加速，節省操作時間。
- ◆ 前後束緊機構後退時，可控制其後退距離，更換鞋子大小簡易。
- ◆ 本機每個動作均具有調壓功能，調壓把手位於機台前方，以利操作人員調整。
- ◆ 本機使用於鞋楦寬在140mm，長度在130mm至400mm之間，高度在190mm以下，鞋邊高度在80mm以下之牆式包底、龍船底運動鞋與休閒鞋的外底壓著。
- ◆ Hydraulic system design suitable for outsole attaching of shoes, boots, casual shoes, and kinds of walled shoes. The perfect pressing of outsole, side, toe and heel forming can be accomplished simultaneously or separately.
- ◆ There is a prepared oil-tank to supplement oil when cylinder rising which makes the rising faster and saves the operation time to increase benefit.
- ◆ When the mechanism of front-rear pressing recedes, a special circuit device is adopted to control the receding stroke, and the proper receding distance is accordingly for locating different sizes of shoes.
- ◆ Independent pressure adjustment. Adjustment handle in the front of machine.
- ◆ This machine is available to press shoes with lasts between 130mm and 400mm in length, 140mm in width, below 190mm in height. Below 80mm in height of walled outsoles, such as jogging, walled sports and casual shoes.

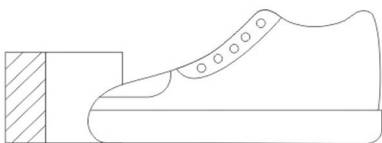
| 型 號      | Model                     | TH-710A                           |
|----------|---------------------------|-----------------------------------|
| 側壓塊數量    | Pcs of Lateral Latexes    | 8                                 |
| 側壓塊高度    | Height of Lateral Latexes | 80 mm                             |
| 前後束緊間距調整 | Adjustment of Constrction | 2 sections                        |
| 馬達動力     | Pump Motor                | 2.2 KW                            |
| 使用壓力     | Oil Pressure              | 50 kg/cm <sup>2</sup>             |
| 產量       | Productivity              | 250 pairs/hour                    |
| 淨重       | N.W.                      | 1140 Kg                           |
| 毛重       | G.W.                      | 出貨時提供 Be provided before shipment |
| 機械尺寸     | Dimension(LxWxH)          | 1090x1000x1960 mm                 |
| 包裝尺寸     | Packing size(LxWxH)       | 1150x1220x2030 mm                 |

※ 本公司保有隨時變更設計之權利，不另通知。  
 ※ The description and features mentioned on the catalogues are binding any change mayde made without notice.

**專利產品**  
Patented Product



龍船底慢跑鞋鞋頭束緊方式  
The clamp way for jogging shoes



牆邊式運動鞋束緊方式  
The clamp way for cup-sole sports shoes

