

# PAINT PROTECTION FILM

**Cich Wrap**  
PAINT PROTECTION FILM

ACID RAIN  
SAND AND GRAVEL  
STRONG SUNLIGHT  
SURFACE OXIDATION  
BIRD DROPPINGS  
CUT RUB

CAR PAINT DAMAGE IS EVERYWHERE

TPU · TPH

CICH WRAP

PAINT PROTECTION FILM

EFFECTIVELY SOLVE 8 MAJOR PROBLEMS.

- 1 Prevent all kinds of minor scratches
- 2 Block the impact of high speed stones
- 3 Increased body brightness by 25%
- 4 More resistant to rot
- 5 Cover blemishes in the paint
- 6 Scratch thermal repair
- 7 Anti-aging properties
- 8 Effectively prevent paint oxidation

SIZE : 49ft × 15ft 1.52 × 15M

## Material introduction

**1st layer: Anti—fouling coating, used to eliminate dust, contamination and repair**

**2nd layer: TPH , a kind of thermoplastic soft rubber material with rubber elasticity without vulcanization. mainly used as a protective layer.**

**3rd layer: Acrylic copolymer, with strong adhesion of paint surface, strong removal.**



## PPF—VS

**Cich Wrap**  
PAINT PROTECTION FILM

Quick Self—Healing

**180**  
MICRON  
THICKNESS

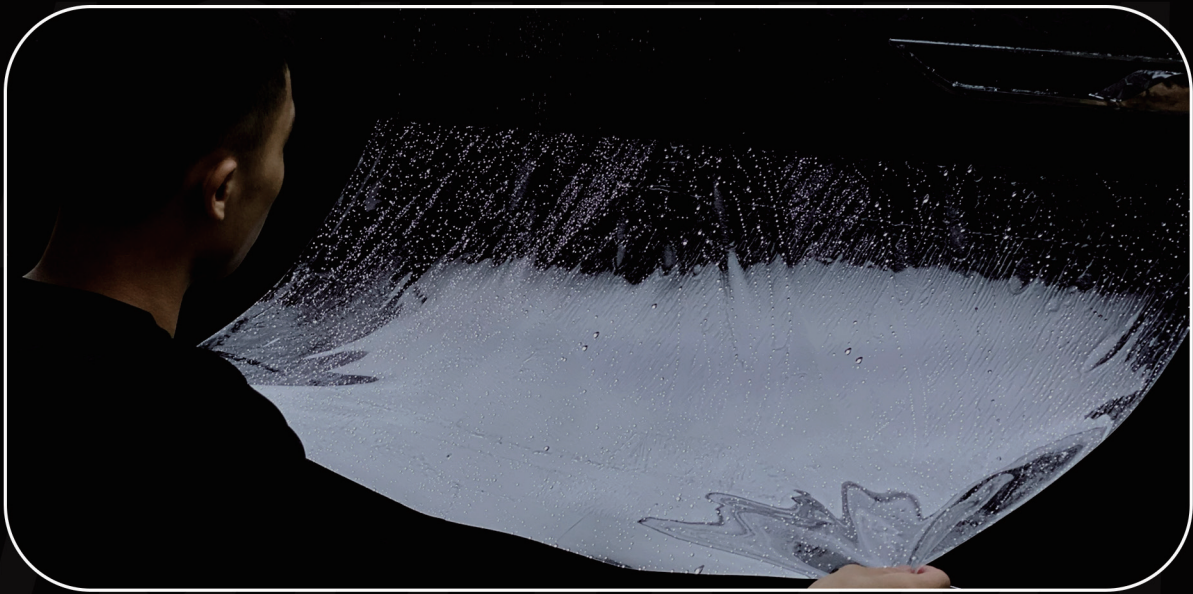
**3**  
YEARS  
GUARANTEE

**SELF-HEAL**  
FEATURE

**WET**  
APPLICATION



# CICH WRAP



PPF—G1

*Cich Wrap*  
PAINT PROTECTION FILM

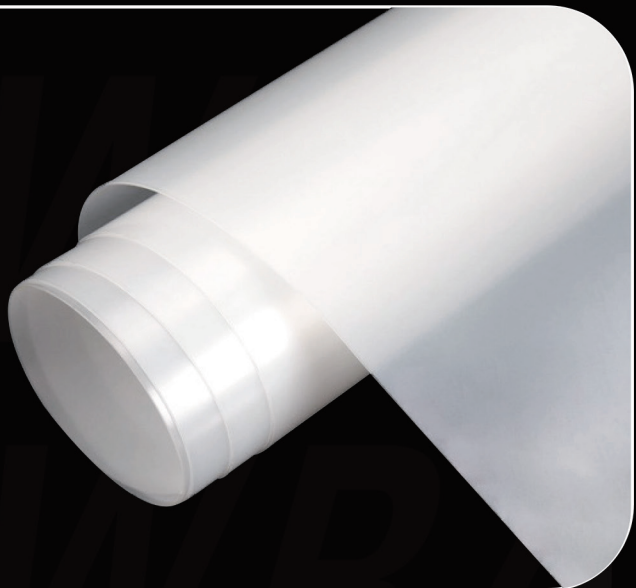
Quick Self—Healing

180  
MICRON  
THICKNESS

5  
YEARS  
GUARANTEE

SELF-HEAL  
FEATURE

WET  
APPLICATION



# CICH WRAP



## PPF—G1 (BLACK)

*Cich Wrap*  
PAINT PROTECTION FILM

Quick Self—Healing

180

MICRON  
THICKNESS

5

YEARS  
GUARANTEE



SELF-HEAL  
FEATURE



WET  
APPLICATION

# CICH WRAP



## PPF—G2

*Cich Wrap*  
PAINT PROTECTION FILM

Quick Self—Healing

**160**  
MICRON  
THICKNESS

**10**  
YEARS  
GUARANTEE

  
SELF-HEAL  
FEATURE

  
WET  
APPLICATION

# THE PAINT PROBLEM WAS SOLVED



-  **Protect the original car paint**
-  **Strong tensile elasticity**
-  **Quick repair of scratches**
-  **Invisible incremental finish**
-  **Excellent stain resistance**
-  **Perfect paste effect**

**LACQUER FACE SHIELD** Real-time protection

## 3 quality assurance

**Tensile ductility**  
Strong and not easy to tear

**Easy construction and installation**

**Thermoplastic repairable**

## INVISIBILITY CLOAK REDUCES DAMAGE

