

A photograph of a modern house with a dark grey roof and white walls. The roof is covered with a large array of blue solar panels. The house has several windows with yellow curtains. The sky is blue with some light clouds.

Solar Energy Solution Manufactory

High Quality

All in one Solution

Comprehensive service



@yohoo elec

www.yohooelec.com

01 Company Profile

02 Photovoltaic Energy Storage Products

03 Yohoo Elec Core Advantages

Company History



2009

Yohoo was established in Dongguan in 2009, Producing power adapters, charging pile parts, and batteries for OPPO,VIVO.



2019

In 2019, expand to three production bases worldwide with an annual revune of \$150 million.



2020

In 2020, it began developing home energy storage products and inverters, as well as EV charger.



2024

Yohoo Chongqin production base of commercial & industrial ESS will start to operate by April of 2024.

Current Markets and Global Locations



 **Current Markets and Global Locations**
Continuously increasing

OEM/ODM +OBM

Photovoltaic Energy Storage Product

1



R&D and manufacturing of inverter equipment

2



Energy storage battery

Electronic Power Equipment

1



Power Electronics Manufacturing

2



Manufacturing of EV charging pile equipment

Product System



Quality / Affordable / Service

Lithium Battery (BESS)

Portable Power Station



Residential Energy Storage



Cabinet & Container BESS



Solar Inverter

On/Off Grid Inverter 3.5~6KW



On/Off Grid Inverter 8~10KW



Single Phase Hybrid Inverter 8KW ~12KW

Three Phase Hybrid Inverter 12KW

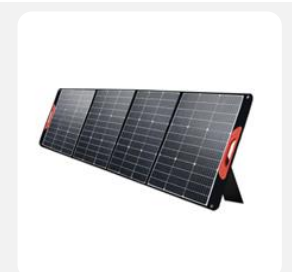


Solar panels

Solar Panel



Portable Solar Panel



Global Partners



CATL

EVE®

LiTHIUM



1+ ONEPLUS

oppo

realme

WINGTEC
PROFESSIONAL SOLUTIONS



TBEA
特变电工

TCL

HQ HUAQIN
华勤技术

UROVO® 优尊讯



TINNO

MEIZU

E-POW 亿能电子



Energy management



Quality / Affordable / Service



Empowering individuals to take control of their energy management



Yohoo elec www.yohooelec.com



Preventing power disruptions during critical times



Yohoo elec www.yohooelec.com

From sunrise to sunset,
we're your reliable
energy partner

YoHoo elec www.yohooelec.com

Empowering individuals
to take control of their
energy usage

YoHoo elec www.yohooelec.com

01 Company Profile

02 Photovoltaic Energy Storage Products

03 Yohoo Elec Core Advantages

Residential Energy Storage



5.12kwh wall mounted lithium battery



Yohoo elec 51.2V 100AH

Items	Specifications
Rated energy(kWh)	5.12KWh
Nominal Voltage(v)	51.2V
Working Voltage(v)	42V~58.4V
Nominal Capacity(Ah)	100Ah
Rated charge / discharge current(A)	50A/100A @25±2°C
Maximum charging current	100A@25±2°C
Maximum discharge current	100A @25±2°C
Working Temperature	0~40°C(Charge) -20~40°C(Discharge)
Humidity(%)	5~95%
Altitude Limited(m)	0~3000m
Weight(Kg)	48Kg±3kg
Dimension(mm)	580x460x172.4mm
Storage temperature and humidity	-10°C~35°C (Within one month of storage) 25±2°C (Within three months of storage) 65%±20%RH
Cycle life	0.5c ≥4800 Cycles , 0.2c ≥5800 Cycles
Designed calendar life	15 years
Warranty	5 years + 5 years (extendable)
Cell	A grade new cell
IP grade	IP20
Communication mode	CAN&RS485

V2.1*Information may be subject to change without notice.

10,2kwh wall mounted Lithium-ion battery



Yohoo elec 51.2V 200AH

Items(51.2V 200AH)	Specifications
Battery Configuration	2P16S
Rated voltage	51.2V
Operating voltage range	43.2V~58.4V
Rated Capacity	200Ah
Rated	10.24KWh
Standard charge/discharge current	50A @25±2°C
Maximum charging current	100A@25±2°C
Maximum discharge current	100A @25±2°C
Working temperature	0~40°C(Charge) -20~40°C(Discharge)
Storage temperature and humidity	-10°C~35°C(Storage within one month) 25±2°C(Storage within three month) 65%±20%RH
Dimensions (L x W x H)	(830)×(520)×(159)mm
weight	98Kg±3kg
Cycle life	6000 cycles @25°C 80%DOD
IP Rating	IP 2X
communication method	CAN&RS485
Altitude	0-3000m
Humidity range	5~80%

14,3kwh Floor stand Lithium battery



Yohoo elec 51.2V 280AH

Items(51.2V 280AH)	Specifications
Rated energy(kWh)	14.336KWh
configuration	1P16S
Nominal Voltage(v)	51.2V
Working Voltage(v)	42V~58.4V
Nominal Capacity(Ah)	280Ah
Rated charge/discharge current(A)	100A/200A @25±2℃
Maximum charging current	200A@25±2℃
Maximum discharge current	200A @25±2℃
Working Temperature	0~40C(Charge)-20~40C(Discharge)
Humidity(%)	5~95%
Altitude Limited(m)	0-3000m
Weight(Kg)	113Kg±3kg
Dimension(mm)	817×412×267mm
Storage temperature and humidity	-10℃~35c (within one month of storage) 25±2℃ (within three months of storage) 65%±20%RH
cycle life	6000 cycles @25℃ 50A Charge and discharge current 80%DOD
IP grade	IP20
Communication mode	CAN&RS485

Residential BESS High Voltage



Quality / Affordable / Service



Items	YH-AC-S1	YH-AC-S2	YH-AC-S3	YH-AC-S4	YH-AC-S5
Rated energy(kWh)	5.6KWh	11.2KWh	16.8KWh	22.4KWh	28KWh
Configuration	32S1P	2*32S1P	3*32S1P	4*32S1P	5*32S1P
Nominal Voltage(V)	102.4V	204.8V	307.2V	409.6V	512V
Working Voltage(V)	86.4V-116.8V	172.8V-233.6V	259.2-350.4V	345.6-467.2V	432-584V
Rated charge/discharge power(KW)	5.12KW	10.24KW	15.36KW	20.48KW	25.6KW
Cell chemistry	Lithium Iron Phosphate				
Nominal Capacity(Ah)	55Ah				
Rated charge/discharge Current(A)	50A				
Communication Interface	CAN/RS485				
Cycle life	5000cycles				
Working Temperature	-15-45(°C)				
Humidity(%)	5%-65%				
Altitude Limited(m)	2000m				
Weight(Kg)	73±2KG	121±4KG	169±6KG	217±8KG	265±10KG
Dimension(mm)	630*380*550mm	480*450*766mm	680*500*982mm	680*500*1198mm	710*220*1414mm

All in one BESS



10kWh Stackable Energy Storage System

Inverter

Battery Input Parameter

Type of battery	lithium iron phosphate battery (LFP)
Rated battery input voltage	48V (minimum starting voltage 44V)
Maximum charging current of hybrid charging	80A
Battery voltage range	40Vdc to 60Vdc \pm 0.6Vdc <small>(under voltage alarm/shutdown voltage/ overvoltage alarm/Overvoltage recovery...)</small>

Solar Input Parameter

Maximum PV open circuit voltage	495Vdc
PV operating voltage range	120-495Vdc
MPPT voltage range	120-495Vdc
Maximum PV input current	18A
Maximum PV input power	5200W
Maximum PV charging current	80A

AC Input Parameters

Maximum charging current of the mains	60A
Rated input voltage	220/230Vac
Input voltage range	UPS mains mode: (170Vac~280Vac) \pm 2%; APL generator mode (90Vac~280Vac) \pm 2%
Frequency	50Hz/ 60Hz (Automatic detection)
Mains charging efficiency	>95%
Conversion time (bypass vs. inverter)	10ms (typical value)
Maximum bypass overload current	40A

AC Output Parameter

Output voltage waveform	pure sine wave
Rated output voltage (Vac)	230Vac (200/208/220/240Vac)
Maximum efficiency	>90%
Rated output power (W)	5000 (4350/4500/4800/5000)
Peak power	10000VA
Output frequency range (Hz)	50Hz \pm 0.3Hz/60Hz \pm 0.3Hz



10kWh Stackable
Energy Storage System

Battery pack

Items	Specification Parameter
Cell	LFP cell 3.2V/100Ah
Cell parallel mode	16S1P (Two modules in parallel)
Rated capacity	200Ah
Watt-hour	5.12KWh*2
Operating voltage	40-58.4V
Nominal voltage	51.2V
Internal resistance	IR≤30mΩ
Charging voltage	58.4V
End-off voltage	40V
Standard charging current	40A
Standard discharge current	40A
Maximum continuous discharge current	100A
Communication interface/protocol	RS485
Indicator light	ALM / RUN / SOC
Operating temperature	Charge: 0°C ~ 55°C Discharge:-10°C ~ 55°C
Storage temperature	1 month: -20°C ~ 45°C; 1 year: 0°C ~ 35°C



IP20 Inverter 6KW

SOLAR CHARGER & AC CHARGER

Maximum PV Array Open voltage(V)	500VDC
Maximum PV Array power	6000W
MPPT voltage range(V)	60~450VDC
Maximum input current	27A
MPPT tracker/strings	1/1
Maximum solar charge current	120A
Maximum AC charge current	100A
Maximum charge current	120A

AC Output

Surge power	12000VA
Voltage regulation(Battery Mode)	230VAC±5%
Rated frequency	50/60Hz
Rated frequency	up to 93.5%
Transfer Time	10ms(For Personal Computers);20ms(For Home Appliances);

Battery

Battery voltage	48VDC
Battery voltage	54VDC
Overcharge Protection	63VDC
Battery type	Lithium /Lead-acid

GENERAL PARAMTER

Operation temperature	0°C~50°C
Relative humidity	0~95%(non-condensing)
Altitude	(>2,000m Derating)
Dimensions D x Wx H (mm)	434*311*126.5
Net Weight(KG)	9KG



Hybrid Inverter 10/12KW

PV String Input Data

Max. input PV power (W)	13000	15600
Rated PV Input Voltage (V)	370	
Start-up Voltage (V)	125	
MPPT Voltage Range (V)	150~425	
Maximum PV Array Open Circuit Voltage (V)	500	
Max. PV Input Current(A)	26+26+26	26+26+26
No.of MPPT Trackers/No.of Strings per MPPT Tracker	3/2+2+2	3/2+2+2

AC Output Data

AC Output Frequency and Voltage	50/60Hz; L/N/PE 220/230V (single phase)	
Rated AC Output Power (W)	10000	12000
AC Output Rated Current (A)	45.5/43.5	54.5/52.2
Peak Power(W)	20000	24000
Power Factor	0.8 leading - 0.8 lagging	

Battery Input Data

Battery Type	Lead-acid or Lithium-ion	
Battery Voltage Range (V)	40~60	
Max. Charging/discharge Current (A)	220/220	250/250
Max. efficiency	97.60%	

General Data

Operating Temperature Range (°C)	-40~60°C,>45°C Derating	
Size (W x H x D mm)	330×580×232 (Excluding connectors and brackets)	
Weight (kg)	31	33
Protection Degree	IP65	
Communication	RS485,CAN	

Portable Power Station



Portable Power Station



-  **TV**
8 Hours (60W)
-  **Refrigerator**
12 Hours (40W)
-  **Wifi**
96 Hours (5W)
-  **Lighting**
48 Hours (10W)
-  **CCTV**
16 Hours (30W)
-  **Electric fan**
19 Hours (25W)
-  **Computer**
9.5 Hours (50W)
-  **Phone**
26 Times (18W)

Technical Indicators(PPS-600W)	Parameters
Battery Energy	605WH
AC Output Nominal Voltage	220V±5% 50Hz
AC Output Nominal Power	600W(instantaneous peak power 1000W)
Output TYPE-C1 Output	5V/3A,9V/3A,12V/3A,15V/3A,20V/5A,MAX:100W
Output TYPE-C2 Output	5V/3A,9V/3A,12V/3A,15V/3A,20V/3.25A,MAX:65W
Output USB-A Output	5V/3A,9V/2A,12V/1.5A 18W MAX
Car Charge Output	(12V±1.5V)/10A
DC Charging	24V/7A MAX168W
PV Charging	300W Max, VOC 19.5-22V, 15A
Wireless charging	15W MAX
Charging ambient temperature	0°C~45°C
Discharging ambient temperature	-20°C~55°C
Operating Temperature	-10~40°C(14~104°F)
Dimensions	330*205*197mm
Net Weight	about 6.7kg

*All the data above are collected through experiments.

Portable Power Station



TV
14 Hours (60W)

Refrigerator
22 Hours (40W)

Wifi
179 Hours (5W)

Lighting
89 Hours (10W)

CCTV
29 Hours (30W)

Electric fan
35 Hours (25W)

Computer
18 Hours (50W)

Phone
97 Times (18W)

Technical Indicators(PPS-1000W)	Parameters
Model	YH-PPS1000
Battery energy	1120Wh
AC Output Nominal Voltage	220V±5% 50Hz
AC Output Nominal Power	1000W(instantaneous peak power 2000W)
Output TYPE-C1 Output	5V/3A,9V/3A,12V/3A,15V/3A,20V/5A,MAX:100W
Output TYPE-C2 Output	5V/3A,9V/3A,12V/3A,15V/3A,20V/3.25A,MAX:65W
Output USB-A Output	5V/3A,9V/2A,12V/1.5A 18W MAX
DC Car Charging Output	(12V±1.5V)/10A
AC Charging	MAX. Power 800W
AC voltage input	220V
DC Charging	24V/7A
PV Charging	300W Max, VOC 19.5-22V, 15A
Wireless charging	15W MAX
Charging ambient temperature	0°C~45°C
Discharging ambient temperature	-20°C~55°C
Dimensions	420X197X205mm
Net Weight	About 14kg

*All the data above are collected through experiments.

ALL-IN-ONE Trolley



Quality / Affordable / Service



YHELEC3600/YHELEC5600

Items(YHELEC5600/YHELEC3600) Inverter Specification

Inverter Type	Hybrid Inverter/ Off-grid/On-grid/Parallel config	
Rated Power	5600W	3600W
Peak Power	11KVA	7KVA
Output Voltage	200V/210V/220V/230V/240 (or 100V/105V/110V/120V is optional)	
Voltage Stability Rate	±5%	
Output Frequency	50HZ/60HZ±0.3%	
Waveform	Pure Sine Wave	
Waveform Distortion	<3%	
Power Factor	1	
Overload Capacity	≥125% ≥150% >150%	
Max Efficiency	>92%	
Inductive Load Capacity	4HP	2.5HP
Circuit Protection	Breaker 150A	Breaker 100A
Economy Mode	Auto-sleep mode w/o load	
Protection	Overvoltage,Overcurrent,Short Circuit,Overtemperature and Low-voltage,Fault	

Energy storage Specification

Battery Type	LiFePO4	
Protection	Built-in BMS	
System Capacity	5.12KWH/100AH	3.07KWH/60AH
Rated Voltage	51.2V	51.2V
Cell Config	16S1P	16S1P
Operating Voltage Range	40-58.4V	40-58.4V
Max.Continuous Charging/Discharging Current	100A	60A
Lifecycle	4000 times/0.5C charging and discharging/25°C	
Operating Temperature	Charging: 0°C-45°C/ Discharge: -20°C-55°C	

ALL-IN-ONE Trolley



YHELEC3600/YHELEC5600

Items(YHELEC5600/YHELEC3600)		PV Input	
Control Type		MPPT	
Input Voltage Range		100-450V(DC)	
OCV		500V(DC)	
Max.Input Current		20A	20A
MPPT Max.Charge Current		100A (recommend 80A)	60A (recommend 40A)
Max.Power		6000W(300V-20A)	4500W(300V-15A)
Recommd. Power Range		1500W-4000W	1000W-2500W
Recommd.Rated Current of PVPanel		≤20A	≤15A
Wind Energy Input			
Recommd. Rated Power		<3KW	<2KW
Rated input Voltage		48V(DC)	48V(DC)
Max. Input Voltage		<70V(DC)	<70V(DC)
Input Interface		DC	DC
Max. Input Current		50A	30A
Remark	The Wind generator should be with rectifier and wind-resistance control system.		
AC Specification			
Input Voltage Range		200V/210V220V/230V/240/or (100V/105V/110V/120V is optional)	
Input Frequency		50HZ/60HZ	
Input Current		40A	30A
Switching Time(ms)		10MS(Typical value) (Bypass, Inversion)	
Max.Charging Current		80A	50A
Protection		Over-charge(manual resetting)	

ALL-IN-ONE Trolley

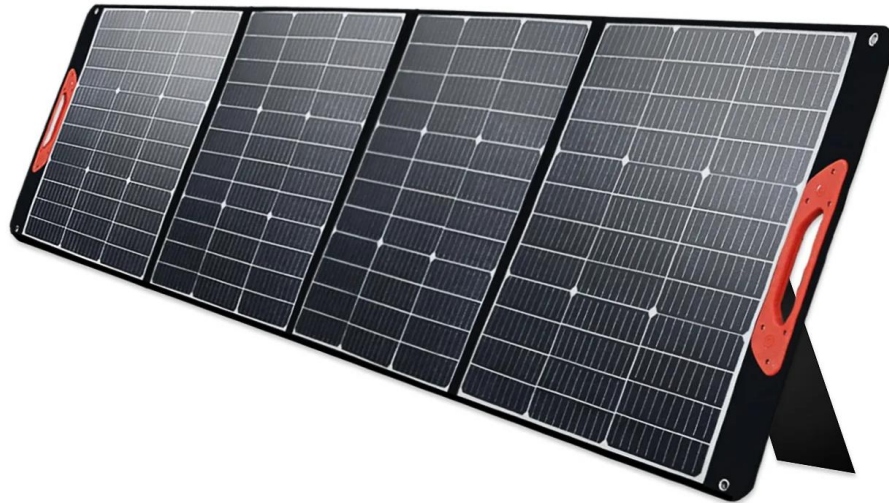


YHELEC3600/YHELEC5600

Items(YHELEC5600/YHELEC3600)	Other Specification
Display	LCD
Panel charging interface	4-USB-3A/ 2-Type C-5A (Overcharge) / 2-DC3.5-12V2A
Communication Interface	USB/RS485/(WIFI/GPRS) Dry contact WIFI MOUDEL(optional)
Operating Temperature	-15°C-55°C
Operating Humidity	5%-95%(Circuit boards have been sprayed with protective paint)
Rated Altitude	<2000M
Cooling Type	Built-in intelligent forced air cooling (automatic adjustment of wind speed)
Noise level	<60db
Ingress protection	IP20
Working Environment	Indoor
Installation Method	Integrated structure/vertical
Storage Environment	Indoorl-30°C-60°C/humidity < 90%
Dimension	560*350*660mm (including wheels) 450*300*450mm (including wheels)
Weigh	66.8KG 46.8KG
Certification	CG(IEC 62109-1) UN38.3, MSDS, EN55032, EN55024, EN61000-3-3

Portable Solar Panel

Portable Solar Charging Panel



Model: PV110

Standard Power: 100W

Open Circuit Voltage: 24.4V

Standard Working Voltage: 20.6V

Standard Working Current: 4.85A

Short Circuit Current: 5.11A



01 Company Profile

02 Photovoltaic Energy Storage Products

03 Yohoo Elec Core Advantages

Company Advantages



Four Major Factories



Yohoo-Dongguan

Global Headquarters:
Battery & Inverter R&D



Minos - Indonesia

Indonesia:
power supply manufacturing



Yohoo-Chongqing

Chongqing: C&I ESS, PV charging production base



Caria-India

India:
Power cable manufacturing

R&D Capability

30+
Ph.

80+
Master

150+
R&D Staff



Research partnerships: With more than 150 R&D personnel, our company has established partnerships with academic and research institutions, which can provide access to the latest technologies and research findings in the energy storage field.

Technology expertise: Our R&D personnel has experience in developing and optimizing battery technologies for fast charging, which can be applied to household energy storage solutions. This knowledge can be leveraged to create more efficient, longer-lasting, and higher-capacity batteries for home use.

Manufacturing capabilities: With multiple automated production lines, our company has the infrastructure and processes in place to efficiently manufacture large quantities of batteries, which can reduce costs and increase the availability of home energy storage solutions.

Quality Certification



Our Factory Pictures



Our Factory Pictures



Automatic Production Workshop

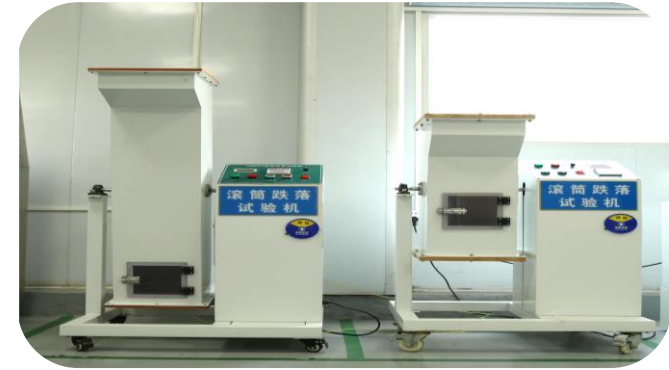
Test Equipments



Constant temperature and heat laboratory equipment



Thermal shock test equipment



Roller drop test equipment



Double disc double control grinder equipment



Stress test equipment



Lightning strike generator equipment

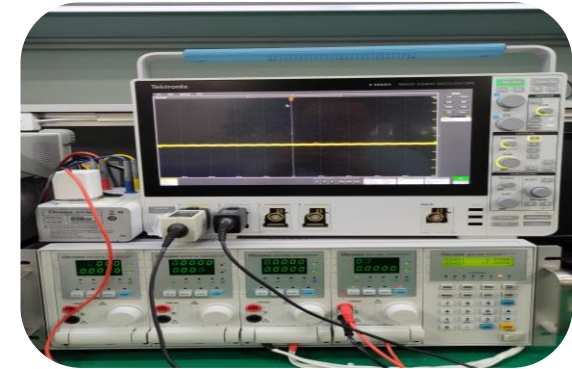
Test Equipments



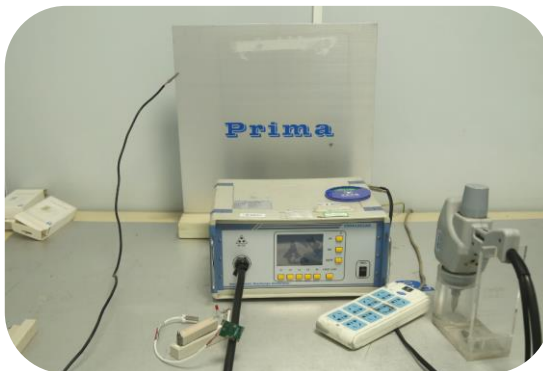
Constant temperature and humidity test equipment



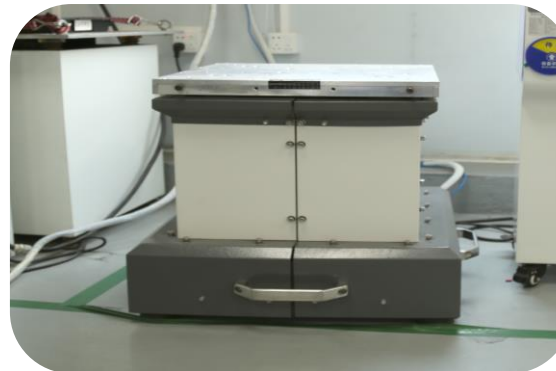
UV accelerated aging test machine



Tektronix digital oscilloscope, Chroma electronic load



Electrostatic discharge generator equipment



Horizontal and vertical vibration test equipment



Static test equipment

Safe, Stable, Ultra long-life product performance is critical to our business. From product design and development to technical support, we provide complete custom solutions and dedicated services to help customers maximize brand value and product upgrades.

R&D Center

We have an experienced and qualified R&D team of 150 engineers dedicated to the research and development of products, We always make our products meet customers' needs through innovative ideas and technologies

Flexible Delivery

Direct from factory or from local warehouse



Quality Assurance

Our company has a complete quality management system. Incoming material inspection, manufacturing, product aging, and product shipment are strictly controlled in every process to ensure product quality and service life.

Honesty, Fairness and Integrity

We believe in three core values: honesty, fairness and integrity. We treat customers sincerely and fulfill our commitments!

Thank You