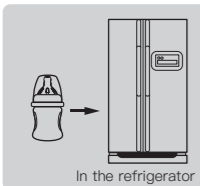
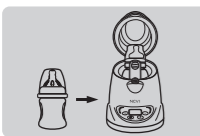


### STORING BREAST MILK



**STORING BREAST MILK**  
Ways of storing breast milk  
1. You can store the breast milk in the refrigerator for 48 hours at approx 4°C.  
2. When freezing breast milk, leave space at the top of the bottle.



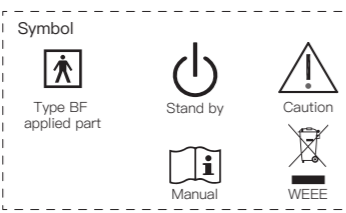
**TO WARM MILK**  
1. In order to preserve the nutrition of the breast milk, you can warm the breast milk with 40°C warm water or use a NCVI bottle warmer.  
2. Do not thaw frozen breast milk in the microwave oven or the boiling water (will damage the nutrition of breast milk).

### STERILIZATION INSTRUCTION

Components	Sterilization Instruction
Motor, Charging Cable	Can not be washed or disinfected, if the surface is dirty, clean it with a soft cloth
Milk Bottle Cap, Milk Bottle, Pump Body, Cylinder Cap	These are made of plastic and can be rinsed or washed in dishwasher (temperature cannot exceed 100°C). After cleaning, you can disinfect these by steam sterilizer, ultraviolet sterilizer, microwave oven (please put disinfect parts into a disinfection container or a disinfection bag), or boiling water (The amount of water cannot be lower than disinfect parts, and disinfect parts cannot directly touch the bottom of the pot or the metal edges).
Cylinder, Flange	These are made of silicone, and they are fragile. Please rinse gently when cleaning. They are not suitable for rubbing and prolonged high-temperature disinfection. Otherwise it could cause rapid aging or deformation, which will affect the use.

### SAFETY CLASSIFICATION

properly dispose of the device in accordance with local, state and federal regulations Safety Classification.  
—Type of protection against electric shock: Internally powered equipment.  
—Degree of protection against electric shock: Type BF applied part.  
—Safety degree of using in flammable anesthetic gas blending with air, oxygen or nitrous oxide: Non-AP/APG.  
—Continuous or Non-continuous operation: Continuous.  
—Classification of sterilization methods:  
No need for sterilization.



### CAUTIONS

1. Please read the manual carefully before use.
2. Please fully charge the product before first use. Do not charge the battery pack for long time. Lithium batteries can only be replaced by NCVI or authorized service providers, and replacing the wrong model battery will have explosion dangers. Dispose the waste battery packs under local laws and regulations.
3. If the product is not used for a long time, the battery will run out of power. It needs to be plugged in for reactivation. After plugging in the power, wait for ten minutes for the screen to light up to indicate that it has been activated. Then continue charge the product till fully charged. If it is not activated for more than half an hour, please consult customer service.
4. The pump motor and other electric parts CAN NOT be washed in water or sterilized into steam sterilizer.
5. After sterilization of suction silica gel, please dry the moisture of suction silica gel before use.
6. When the battery symbol shows that the single grid flashes after starting up, it indicates that the power is insufficient. Please charge it in time.
7. Please use the charging cable provided with this product. Do not plug the charging cable of any other manufacturer into the host for use, so as not to cause damage to the host.
8. Please use DC adapter, select the adapter with input voltage AC100~240V and output DC 5V and 1A.
9. This appliance can be used by children aged from 8 years and above and persons with reduced physical, sensory or mental capabilities or lack of experience and knowledge if they have been given supervision or instruction concerning use of the appliance in a safe way and understand the hazards involved. Children shall not play with the appliance. Cleaning and user maintenance shall not be made by children without supervision.

### POWER SUPPLY USE AND CHARGING METHOD

**Power supply method**  
**Adapter power supply:** when using, insert the adapter into the power socket, make sure it is in place, long press the power button to turn it on, short press the power button to turn it off, and choose the mode and suction level according to your comfort.  
**Lithium battery power supply:** This product has a lithium battery inside. When using it, long press the power button to turn it on. Short press the power button to turn it off (when the battery is active), choose the mode and suction level according to your comfort. When the battery symbol flashes, it means The power is low, please charge it in time.

**Charging method**  
When charging, please plug the adapter into the power socket and make sure it is in place. When charging, it should be in the off state. It will not be charged in the power-on state. During the charging process, the power symbol light is flashing. When the battery symbol is stable bright, the battery is full. Please unplug the power.

### PRODUCT SPECIFICATION

Name	Wearable breast pump	Model	AM8770	Battery Specification	3.7 V 1400 mAh
Voltage	5V	Place of Origin	China	IP22	
Current	650mA	Warranty Time	1 year		
Power	3.25W				

### WARRANTY CARD

Thank you for purchasing our product. Please keep your receipt as proof of purchase for any warranty claim.  
For warranty claims and supports please call us at +1(818)291-3826, or email us at ncv\_i\_amz@xenbea.com  
You can also visit our website www.xenbea.com for more information.

Name		Telephone	
Product Name		Model	
Purchasing Date			
Address			

### NOTICE

1. This product comes with 1 YEAR warranty. Please contact the MANUFACTURER for warranty claims.
2. This warranty does not cover defects caused by: misuse, abuse, improper storage/alteration of the product, use of improper components, failure to comply with the operating instructions using the accessories supplied with the product, or normal wear and tear.
3. The user of this product assumes all responsibility and risk for the use of this product.
4. WARNING: No modification of this equipment is allowed.

### Jiangsu Xinbei Electrical Appliances Co., Ltd.

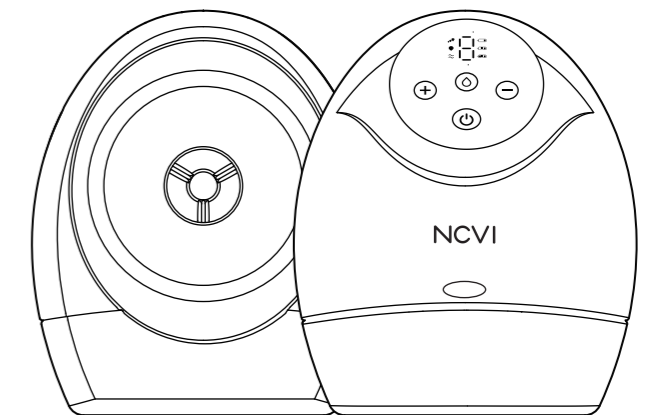
Add: No. 115 Xinjin Road, Xinwu District, Wuxi City, Jiangsu Province  
Tel: +1(818)291-3826  
Fax: 0510-81155918  
Hot line: 400-886-6565  
Http://www.xenbea.com  
E-MAIL: ncv\_i\_amz@xenbea.com  
Please read the manual carefully before use.  
Please store the product where children can not reach.  
Amazon AM8770 Wearable breast pump manual version C-1



# NCVI

## Wearable breast pump

— User Manual —

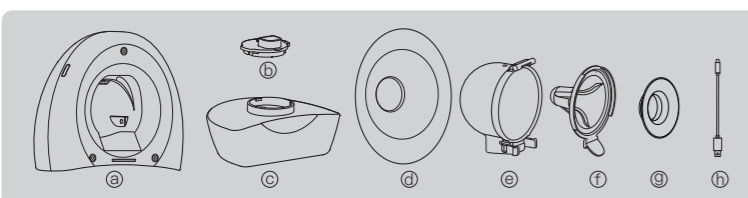


3 Suction Mode · Rechargeable Lithium Battery · Low Noise · BPA Free

### FEATURES

**3 MODES & 9 LEVELS:** Mothers can try different modes (Multitronic Mode, Massage Mode & Express Mode) and levels 1-9 to select the best way to pump.  
**LOW NOISE:** The breast pump electric is made with better design and craftsmanship. Noise is only 40 dB.  
**PORTABLE:** It is light and fits in the bra, the rechargeable lithium battery allows you to pump anywhere and anytime.

### COMPONENTS



• Picture is for reference only, the product is subject to change.  
**Warning:** If any of components are damaged or missing, please contact customer service for help.

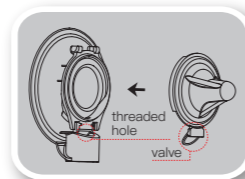
	Component Name	Materials	Operating Temperature
a	Motor	/	/
b	Milk Bottle Cap	PP	-20°C~120°C
c	Milk Bottle	PCT	-20°C~100°C
d	Pump Body	PBT	-20°C~120°C
e	Cylinder Cap	/	/
f	Cylinder	silicone	-20°C~200°C
g	Flange	silicone	-20°C~200°C
h	Charging Cable	/	/
	Instructions	/	/

Note: the above plastic products for food contact comply with GB 4806.7-2016  
Silicone products for food contact shall comply with GB 4806.11-2016

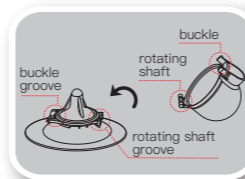
Please clean and disinfect the parts used for food contact before and after each use.

### HOW TO INSTALL

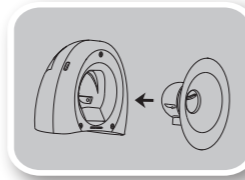
Please wash your hands before assembling the breast pump, and make sure to clean and disinfect the sterilized parts before use.



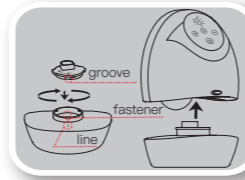
1. Insert the valve of the cylinder into the threaded hole below the pump body, and then attach the cylinder and the pump body.



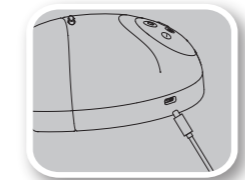
2. Put the rotating shaft of the upper cover into the rotating shaft groove on the pump body, then turn the cylinder cover down to the pump body until the buckle snaps into the buckle groove.



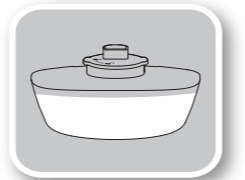
3. Attach the pump body to the motor.



4. First put line "I" and "II" at same direction, and fix the groove of the upper cap to the fastener of the bottle, rotate towards "A". Then put the assembled bottle into the hole under the assembled motor, until hear a click.

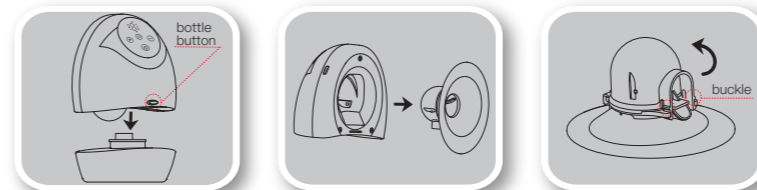


5. Insert the small side of the cable plug into the Type-C jack of the motor, and then plug USB port into the charge bank, computer, or connect to the power socket through the adapter (5V/1A adapter).

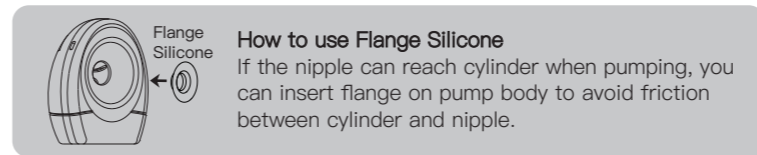


6. The amount of milk in the bottle should not exceed the maximum capacity of the bottle. If it reaches the maximum capacity, please turn off the breast pump immediately. Replace the bottle and continue pumping.

### HOW TO UNINSTALL FOR CLEANING



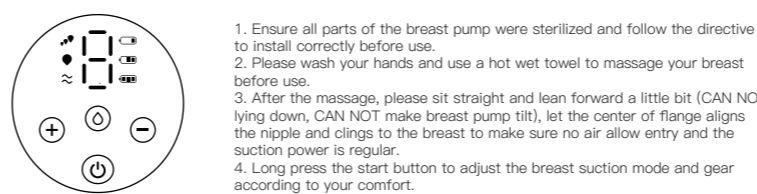
1. Press the bottle button and take out the bottle.
2. Take the pump body out of the host.
3. Please press the two clips on the suction silica gel cover towards the middle and turn it up, and then take out the suction silica gel.



**Friendly reminder:**  
After suction, please take off milk bottle and put on milk bottle cap. Wipe machine with a dry towel. Wash and dry other parts to avoid milk stick on them. If you don't need to feed your baby immediately, please keep breast milk in the fridge.

Do not fill milk bottle with too much milk, it cannot pass the maximum capacity 4.7 oz / 140 mL. If there is too much milk, milk will flow to pump body. In this case, please turn off the machine, replace the bottle or pour milk to other containers.  
**Note:** This breast pump will automatic turn off after working 30 minutes.

### BUTTON AND DISPLAY INSTRUCTIONS



1. Ensure all parts of the breast pump were sterilized and follow the directive to install correctly before use.
2. Please wash your hands and use a hot wet towel to massage your breast before use.
3. After the massage, please sit straight and lean forward a little bit (CAN NOT lying down, CAN NOT make breast pump tilt), let the center of flange aligns the nipple and clings to the breast to make sure no air allow entry and the suction power is regular.
4. Long press the start button to adjust the breast suction mode and gear according to your comfort.

Button Instruction		
	Turn on/off	Long press to start, short press to shut down
	Mode switch	Short press to change modes
	Level switch	Increase or decrease suction level
Display Instruction		
	Battery indicator	It will flash when charging
	Suction level	Number 1-9 show different level of suction
	Multitronic mode	Five times light suction plus one heavy suction loop
	Massage mode	1 to 5 suction level auto change
	Express mode	Normal suction loop

### TROUBLE SHOOTING

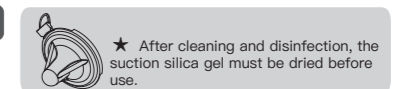
Too little or no suction  
A. Check if all components are installed correctly.  
B. Check if the centre of flange aligns the nipple and clings to breasts, make sure no air entry.

### WORKING CONDITION

Rated temperature range: 5°C to 40°C  
Rated relative humidity: 20%~80%  
Rated atmospheric Pressure: 850Hpa - 1060Hpa  
Long-term storage should be kept in a dry and cool place

### TRANSPORT & STORAGE CONDITION

Temperature: -20°C to 55°C  
Humidity: 20% - 80%  
Atmospheric pressure: 850Hpa - 1060Hpa



★ When pumping, should keep the correct posture, please do not lie on the side in case of the milk back flow.

