

MOTOEYE

Extended Camera Module

Quick Guide

This manual is applicable to the following models

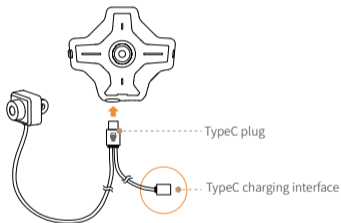
MX335

Xi'an Vidoar Technologies Co., Ltd.

www.vidoar.com

1.Connection Description

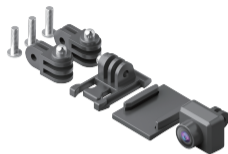
- (1) Insert the TypeC plug of the extended camera module into the TypeC interface of the HUD when the HUD is turned off, the direction shown in the figure below.
- (2) The TypeC charging port of the extended camera module can be used to charge the HUD. This product supports charging during use.



Note:

- (1) The extended camera module does not support forward and backward insertion. When inserting, ensure that the identification on the plug is aligned with the front facing of the HUD product.
- (2) This product can only be used to connect MOTOEYE HUD and does not support connecting to other devices.

2.Packing List



3.Installation Position



Full-face helmet installation



Other helmets installation