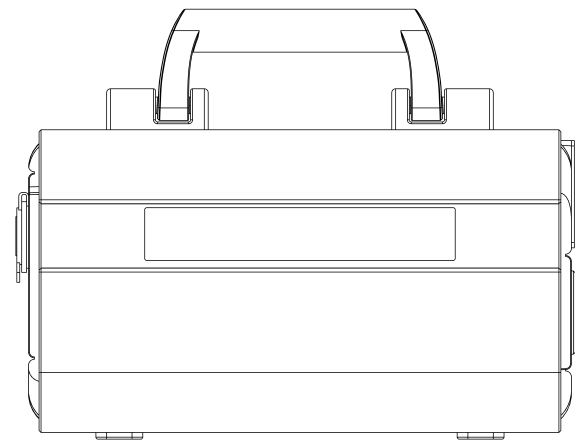




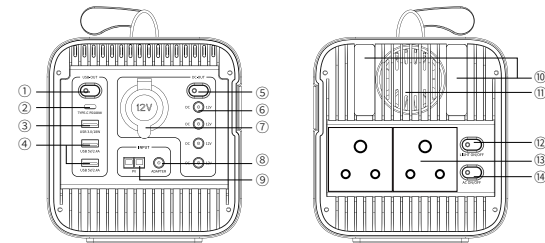
Product Instruction Manual



Model:BPS-600ME

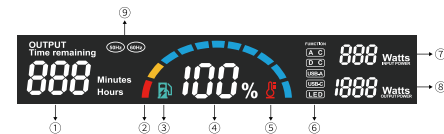
Product Appearance Illustration

Function Illustration of Product Interfaces



- ① USB-A Switch ② Type-C Output/Input ③ USB3.0 Output ④ USB Output
⑤ DC Switch ⑥ 12V/DC Output ⑦ Car Charging Output ⑧ DC Input ⑨ Anderson Input
⑩ LED Flashlight ⑪ Cooling Fan ⑫ LED Light Switch ⑬ AC Output ⑭ AC Switch

Display Screen Illustration



- Remaining output time:** Calculate the remaining output time automatically according to different electrical load.
- Battery level indicator:** According to the percentage, the power is divided into 11 grids. The more power indicator grids, the more sufficient power.
- Low battery notification:** Low battery warning indicator will flash when the battery level is lower than 10%.
- Battery percentage display:** Show the battery percentage.
- Thermometer icon:** When the device temperature is too high, the thermometer icon will flash.
- Output status indicator:** Display output status including DC, AC, USB-A, USB-C and LED.
- Input Power:** Display the charge power.
- Output Power:** Output power drawn by the electrical load.
- Output Frequency:** When the 50Hz or 60Hz icon is on, the AC output frequency is 50Hz or 60Hz.

User Guide

- It is recommended to keep the device fully charged before using it for the first time in case of any inconvenience caused by insufficient power.
- After pushing the switches ①, ⑤, ⑭, the corresponding function icon on the screen will light up, and the corresponding outlet will be powered. Then you can use it according to your needs. TYPE-C is plug and play.
- You can change the frequency of AC supply according to the instruction manual of the electrical equipment or the local standards by pushing the ⑭ button three times. The frequency will be displayed on the screen.
- When the outlet is not in use, please press the corresponding button to switch it off and save the power. If the icon on the screen is dim, it indicates that the power to the outlet is off.
- High and low temperature may affect the service time of the product, so it should be used within the working temperature of 14°F~104°F.

Methods of Charging

There are two charging ports (diameters: 5.5mm*2.1mm) on this device. Please use the standard charger for charging. When the device is being charged, the charge power and battery level will be displayed on the screen. When it is fully charged, it will automatically stop charging.

	It takes about 5.5 hours to get this device fully charged using standard adapter.
	It takes about 11 hours to get this device fully charged through the car cigarette lighter socket. <small>(Please keep the car engine running in case it drains the car battery.)</small>
	It takes about 6.5 hours to get this device fully charged using a 100W solar panel. <small>(Ideal situation)</small>

Technical Parameters

Technical Indicators	Parameters	
Battery energy		
529.9Wh		
AC Output	Nominal Voltage	220-240V 50Hz
	Nominal Power	600W (instantaneous peak power 1000W)
DC Output	TYPE-C Output	MAX: 20V*5A
	USB Output	5V*2.4A
	USB 3.0 Output	5V/3A,9V/2A,12V/1.5A 18W MAX
	DC Output	(12±1.5V)*10A
Adapter	22V/5A	
Flashlight	(5W)Common brightness & Highbrightness & Slow blinking & Fast blinking	
AC Discharge Period Running a load of 600W	About 45 minutes	
Charge Time	About 5.5 hours	
Operating Temperature	14°F~104°F	
Dimensions	354X150X180mm	
Net Weight	7.8Kg	

*All the data above are collected through experiments.

Packing List

Portable power station *1, power adapter *1, product instruction manual *1, Product certificate *1.

Troubleshooting

Problems	Causes	Solutions
Charging Failures	The indicator on the screen fails to light up; there could be bad connection between the adapter and the device.	Check if there is a bad connection between the adapter and the socket and make sure the socket is powered.
	The indicator on the screen fails to light up. And there is green light on the adapter.	Check if there is a bad connection between the adapter and the device; please contact our after-sales service team for further help.
	The indicator on the screen lights up, but still no charging	Please remove the adapter and contact our after-sales service team.
	The ambient temperature is too low.	Please charge the device where the ambient temperature is greater than 0°C.
	Other causes	Please contact our after-sales service team.
No Power to the Outlet	The poor connection between the device and the cable.	Keep the device and the cable in good connection. Please use the universal connectors.
	The circuit protection is activated owing to overload.	For high current DC output, please use a car cigarette lighter adapter cable to connect. For AC output, please make sure the power of the electrical equipment conforms to the specification of this device.
	The battery power of the device gets low.	Please recharge the device.
	The ambient temperature is too low.	Please use the device where the ambient temperature is greater than -10°C in case the low temperature protection is activated.
	The power drawn by the load is far more than what is allowed in the specification.	Please stop using the device.

Troubleshooting

No Power to the Outlet	Other causes.	Please contact the after-sales service team.
The power is cut off when the device is discharging	The battery power of the device gets low.	Please recharge the device.
	The power of the electrical equipment gradually exceeds what is allowed in the specification.	Please use the equipment after power de-rating or contact our after-sales service team for device of larger power.
	The over-temperature protection is activated.	Please use the device after it cools down.
	The motor in the electrical equipment like electrical fan, hair dryer or hand drill is not soft motor.	If the equipment is adjustable, please start it after power de-rating.
	Short circuit of your electrical equipment	Please stop using the equipment.
	Short circuit of this device	Please contact the after-sales service team.
	Other causes	Please contact the after-sales service team.

Warranty

Warranty Terms

- Please keep this warranty card properly for future service request.
- Please do not damage the warranty sticker on the connecting part of the product casing.
- The warranty period is valid for twelve months from the date of purchase.
- During the warranty period, if the product itself has quality problems or malfunctions, the official after-sales personnel will verify that it is true. Repairs and replacement parts will be provided free of charge.
- The company reserves the right to modify and interpret all content.

This warranty does not cover product problems related to the following

- The product is damaged owing to failure to follow operation instructions or misuse.
- The warranty sticker on the product is removed or unauthorized teardown of the product.
- The product number has been changed or does not conform to this manual.
- The product was placed in an extreme environment not for its reasonable use including immersion, shaking, high temperature, and corrosive environment, which led to evident damage of the product.
- Product failure caused by external causes beyond our reasonable control including accidents and natural disasters.

Warnings and precautions

- Maintain your children's safety by keeping this product out of their reach.
- Please do not tear down this product. Any unauthorized disassembly will void the warranty.
- Please use the accessories came with the device or recommended by customer service team.
- Please use the product in a well-ventilated and dry place. Please do not charge the product if the ambient temperature is under -10°C.
- Please keep this product away from flammable substances and high-temperature environment.
- When put in storage, please keep the battery power level between 50%-70%, and put it in a ventilated and dry place.
- When put in storage, please charge the products at least once every three months.
- It is forbidden to hammer or pitch the product violently.
- To prevent electrical shock, it is forbidden to use broken or defective cable as the connector.
- It is forbidden to forcefully shutdown the power station.
- AC output port supports 600W resistive load.
- When all output ports are used at the same time, the maximum output power shall not exceed 600W.

www.yohooelec.com

