



利 帅 影 视



**LISHUAI FILM &
TELEVISION EQUIPMENT**



About us

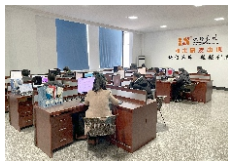
ENTERPRISE INTRODUCTION

Established in 2003, Yuyao Lishuai Film & Television Equipment Co., Ltd is a high-tech enterprise integrating R&D, production and sales of LED photo and video lighting equipments and accessories, and has passed ISO9001 certification.

Since 2006, the company has been mainly committed to the application of various LED lights in the film and photography industries. Up to now, the LS brand and products are specially preferred by film crews, program groups, TV stations, advertisers, lighting engineers, photographers and cameramen.

During the company's development, we adhered to the principle of "taking honesty as foundation, self-surpassing and creative". By present the company has obtained 2 Invention patents, 36 Utility Model patents and Design patents and has been recognized as a "National High-tech Enterprise" for three years since 2014. Every year the company develops sino-foreign cooperation projects and by now has cooperated with several well-known enterprises at home and abroad and has achieved good results. By now the company's current products have passed CE certification.

By steady efforts, our products have been sold far to Europe, America, Middle East, Southeast Asia and Hong Kong, Macao and Taiwan regions, many provinces and cities in china. Customer's trust is always our company's pursue and company's development is inseparable from the support of customers. We sincerely welcome you to join us for future development.





[Introduction]

- ◆ It comes with 2 color working modes, HSI and RGBWT, up to 16 million of different color combinations.
- ◆ Ultra-wide color temperature range of 2600K-7500K.
- ◆ It contains 20 scene mode simulation effects.
- ◆ OLED display is adopted to facilitate users to observe data.
- ◆ It is suitable for live broadcasting, camping, selfie, still life shooting, video recording etc.



HS-T25



Handheld lighting



Desktop lighting



Magnetic lighting



RGB full color gamut adjustable



20 scene mode simulation effects



Mobile APP remote control



High capacity battery

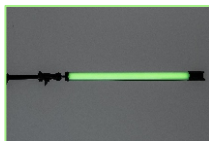
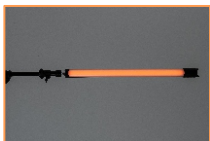
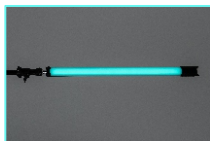
[Specifications]

LED	166pcs LEDs (warm white 68pcs+cool white 68pcs+RGB 30pcs)
Illumination	2600K:452Lux/0.5m 7500K:607Lux/0.5m
Color light	Full RGB+WT spectrum with hue saturation control
Dimming	0-100% continuous
White light	Continuously adjustable 2600K to 7500K
CRI	≥95
TLCI	≥95
Color temperature error	± 200K
Charging port	TYPE-C
Input power	5V 2A max
Built-in battery	3.7V 2500mAh(9.25Wh)lithium battery
Battery duration	100% power for about 70 minutes @7500K
Power	6W
Size	250×44mm
Net weight	About 260g



HS-T60/HS-T120

Spec	Model	HS-T60	HS-T120
Size		68.4x ϕ 4.7cm	125x ϕ 4.7cm
Net weight		0.77kg	1.4kg
Power		18W	36W
Working voltage		AC100-240V, 50/60Hz, DC48V	
Color light		Full RGBWT spectrum with hue saturation control	
White light		Continuously adjustable 2600K to 7500K	
Illumination		2600K:1044Lux/0.5m 7500K:1241Lux/0.5m	2600K:1415Lux/0.5m 7500K:1675Lux/0.5m
Remote control		DMX 512, Remote control, Mobile APP	





HS-T2X/HS-T4X

Model Spec	HS-T2X	HS-T4X
Front diffuser panel	Φ5x59cm	Φ5x119cm
Illuminance	10000K:567lux/0.5m,178lux/1m	10000K:1000lux/0.5m,400lux/1m
	2800K:504lux/0.5m,160lux/1m	2800K:948lux/0.5m,393lux/1m
Beam angle	360°	
Color temperature	2800 ± 150K-10000 ± 200K	
CRI	Ra:96-98	
TLCI	≥96	
Power	30W	60W
Working voltage	AC100-240V, DC13-17V (Battery handle)	AC100-240V
Dimension	Φ5.8x83cm	Φ5.8x154cm
Weight	0.9kg	1.58kg
Accessories	AC power adapter (15V 60W), AC power cord, Ball head, Bag	AC power adapter, AC Power cord, DMX cable,Holder with ball head, Bag
Optional accessories	Battery handle,AC Charger adapter for battery handle, Barn doors	—



Characteristics

- Composed of ultra bright chip LEDs with a lifespan of up to 50,000 hours.
- 360° of bright, soft light is created using a unique 360° arc diffusion surface.
- The design includes an all-aluminum frame for better heat dissipation to help ensure a long product life.
- 0-360° color selection (RGB+WT color gamut).
- Flicker-free and uniformly dimmable from 10%-100% due to the PWM integrated design.
- Color temperature adjustable from 2800K to 10000K.
- The LCD screen displays real-time data for color temperature, brightness and others.
- USB for future firmware upgrades and feature additions. The light is heat-free and provides stable, consistent output.





T2X/T4X

Model Spec	T2X	T4X
LED	720pcs ultra bright chip LEDs	1440 pcs of ultra bright chip LEDs
Illuminance	6500K:925lux/0.5m,276lux/1m	6500K:1330lux/0.5m,505lux/1m
	2800K:820lux/0.5m,246lux/1m	2800K:1281lux/0.5m,483lux/1m
Beam angle	360°	
Color temperature	2800 ± 150K-6500 ± 200K	
CRI	Ra:96-98	
TLCI	≥96	
Power	30W	60W
Working voltage	AC100-240V, DC13-17V (Battery handle)	AC100-240V
Dimension	φ5.8x73.3cm	φ5.8x139cm
Weight	0.725kg	1.17kg
Accessories	AC power adapter (15V 60W), AC power cord, Ball head, Bag	AC power adapter, AC Power cord, DMX cable,Holder with ball head, Bag
Optional accessories	Battery handle,AC Charger adapter for battery handle, Barn doors	/



- Scene simulation
- RGB color output
- Mobile APP remote control
- High CRI



RGB516

LED	366pcs LEDs (warm white 150pcs+cool white 150pcs+RGB 66pcs)
Illumination	2700K:3490Lux/0.5m, 1020Lux/m 6500K:4220Lux/0.5m, 1320Lux/m
Color light	Full RGB+W spectrum with hue saturation control
Dimming	0-100% continuous
White light	Continuously adjustable 2700K to 6500K
CRI	≥95
TLCI	≥97
Color temperature error	± 200K
Input power	12V 2A max
Built-in battery	7.4V 5200mAh(38.48Wh)lithium battery
Battery duration	100% power for about 150 minutes @6500K
Power	16W
Size	598 × 55mm
Net weight	About 865g

Detail functions:



Heat emission holes

DC power connector

Quick setting

1/4" screw hole

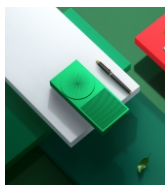
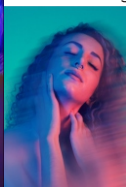
Shooting case:



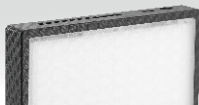
Portrait shooting



Video shooting



Product shooting



HS-P12 HS-P10 RGB LED POCKET LIGHT

HS-P12

LED	150pcs LEDs (warm white 40pcs+cool white 40pcs+RGB 70pcs)
Illumination	3200K:1300Lux/0.5m 5600K:1500Lux/0.5m
Color light	Full RGB+W spectrum with hue saturation control
Dimming	0-100% continuous
White light	Continuously adjustable 3200K to 5600K
CRI	≥95
TLCI	≥95
Color temperature error	± 300K
Charging port	TYPE-C support QC3.0 quick charge
Charging time	2.5 hours with standard 5V 2A adapter
Input power	5V 2A max
Built-in battery	7.4V / 3000mAh
Battery duration	100% power for about 140 minutes @5600K
Power	12W
Size	132 × 79x17.5mm
Net weight	About 200g



RGB full color adjustable



15 scene simulation effects



Mobile APP remote control



High capacity battery



[Characteristics]

- ◆ Portable RGB full color LED video light, with 2500K-8500K color temperature.
- ◆ OLED display, digital dimming.
- ◆ High CRI ≥95, brightness 0-100% adjustable.
- ◆ Built-in 3.85V 4000mAh large capacity lithium battery, support type-C USB charging and discharging.
- ◆ Two fixing interface, supporting horizontal/vertical working.
- ◆ Built-in professional LED driver chip, no ripples or stroboscopic phenomenon when shooting, especially suitable for live broadcasting, camping, selfie, still life shooting, video recording, ect.

HS-P10

LED	135pcs LEDs (warm white 36pcs+cool white 36pcs+RGB 63pcs)
Illumination	2500K:638Lux/0.5m 8500K:879Lux/0.5m
Color light	Full RGB+W spectrum with hue saturation control
Dimming	0-100% continuous
White light	Continuously adjustable 2500K to 8500K
CRI	≥95
TLCI	≥95
Color temperature error	± 200K
Input/output interface	TYPE-C
LED lifetime approx	50000 hrs
Built-in battery	3.85V / 4000mAh
Battery duration	100% power for about 90 minutes @8500K
Power	10W
Size	134.7 × 77.6x10.5mm
Net weight	About 165g



W5

illuminance	5600K(w/white diffusion panel): 455Lux/0.5m, 133Lux/m 5600K(w/o white diffusion panel): 667Lux/0.5m, 185Lux/m 3200K(w/white diffusion panel): 423Lux/0.5m, 120Lux/m 3200K(w/o white diffusion panel): 637Lux/0.5m, 173Lux/m
Beam angle	140°(w/white diffusion panel) 120°(w/o white diffusion panel)
Color temperature	3200K ± 200K ~ 5600K ± 300K
CRI	Ra:95-98
TLCI	≥95
Power (LEDs)	5W
Working voltage	DC5V
Battery Type	Built-in rechargeable lithium battery, 2500mAh, 3.7V
Continuous working time	Approx 1.5hrs
Dimension	12x2.7x7.5cm(w/o white diffusion panel)
Weight	166g (w/white diffusion panel)
Accessories	Hot shoe adapter, White diffusion panel, USB cable, kit bag

[Characteristics]

- Unique convex design of the light
- Wide shootin angle of 120° -140°
- Ultra bright chip LEDs, 100%-10% dimming
- Color temperature 3200K-5600K adjustable
- Built-in battery, work for 1.5hours
- White diffuser panel added to get more soft lighting effect
white diffuser panel to get more soft lighting effect
- Detachable hotshoe adapter for on-camera use



W10

illuminance	5600K:1105 Lux/0.5m,312Lux/m 3200K:980Lux/0.5m,283Lux/m
Beam angle	180°
Color temperature	3200K ± 200K ~ 5600K ± 300K
CRI	Ra:95-98
TLCI	≥95
Power (LEDs)	36W
Working voltage	DC12-17V
Battery Type	Rechargeable lithium battery, 4400mAh, 7.4V
Continuous working time	Approx 1.5hrs
Dimension	19.1x6.7x12.1cm
Weight	534g
Accessories	4400mAh lithium battery, AC adapter 12V 2A, battery charger, ball head, kit bag

[Characteristics]

- Unique convex design of aluminum light
- Wide shootin angle of 180°
- Ultra bright chip LEDs, 100%-10% dimming
- Color temperature 3200K-5600K adjustable
- Operate on battery (DC) or AC power adapter
- Detachable 4400mAh battery, work for 1.5hours
- Built-in white diffuser panel to get more soft lighting effect
- LCD display shows the real-time data of brightness, color temperature and battery level
- Used for all kinds of interview, wedding ceremony, etc.



[Characteristics]

- ◆ High CRI 95, brightness 0–100% adjustable.
- ◆ Support 0–360° hue, saturation and brightness adjustment.
- ◆ Ultra-wide color temperature range of 2600K–7500K in CCT mode.
- ◆ Built-in 7.4V 2500mAh large capacity lithium battery,
- ◆ Support 15 scene mode simulation effects.
- ◆ support type-C USB charging.
- ◆ Support mobile APP control function. One or more lights can be controlled.
- ◆ The bottom of the lamp is magnetic and can be fixed on iron objects.
- ◆ A charging case is provided for charging multiple lamps.
- ◆ There is no flickers when shooting.



[Specification]

LED	84pcs LEDs (warm white 26pcs+cool white 26pcs+RGB 32pcs)
Illumination	2600K:274Lux/0.5m 7500K:312Lux/0.5m
Color light	Full RGB spectrum with hue saturation control
Dimming	0–100% continuous
White light	Continuously adjustable 2600K to 7500K
CRI	Max 95
TLCI	Max 97
Color temperature error	± 200K
Charging port	TYPE-C support QC3.0 quick charge
LED lifetime approx	50000 hrs
Built-in battery	7.4V / 2500mAh
Battery duration	100% power for about 130 minutes @7500K
Power	8W
Size	87x φ 104mm
Net weight	About 290g

