



2021-2022

利 帅 影 视



**LISHUAI FILM &
TELEVISION EQUIPMENT**



About us

ENTERPRISE INTRODUCTION

Established in 2003, Yuyao Lishuai Film & Television Equipment Co., Ltd is a high-tech enterprise integrating R&D, production and sales of LED photo and video lighting equipments and accessories, and has passed ISO9001 certification.

Since 2006, the company has been mainly committed to the application of various LED lights in the film and photography industries. Up to now, the LS brand and products are specially preferred by film crews, program groups, TV stations, advertisers, lighting engineers, photographers and cameramen.

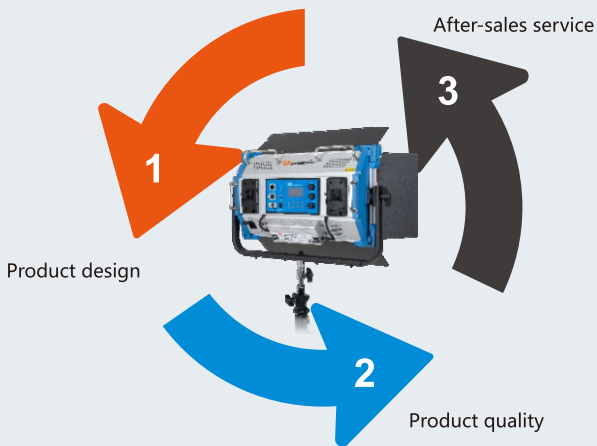
During the company's development, we adhered to the principle of "taking honesty as foundation, self-surpassing and creative". By present the company has obtained 2 Invention patents, 36 Utility Model patents and Design patents and has been recognized as a "National High-tech Enterprise" for three years since 2014. Every year the company develops sino-foreign cooperation projects and by now has cooperated with several well-known enterprises at home and abroad and has achieved good results. By now the company's current products have passed CE certification.

By steady efforts, our products have been sold far to Europe, America, Middle East, Southeast Asia and Hong Kong, Macao and Taiwan regions, many provinces and cities in china. Customer's trust is always our company's pursue and company's development is inseparable from the support of customers. We sincerely welcome you to join us for future development.

CONTENTS

Enterprise environment	01-02
HUESCAPE LED RGB Light	03-10
High Power LED Panel Light	11-15
Victorsoft High Power LED Light	16-18
LED Edge Light	19-21
LED Foldable light	22-28
LED Panel light	29-30
LED On-camera light	31-32
Accessories	33-39

WE ALWAYS SEEK TO DO BETTER





Taking honesty as foundation
self-surpassing and creative





**LISHUAI FILM &
TELEVISION EQUIPMENT**



HUESCAPE LED RGB Light

HUESCAPE LED RGB LIGHT

HS-1200



LED diffusion	Lishuai Huescape Technology
Front diffuser panel	87x130cm
Beam angle	120°
Color light	Full RGB+W gamut with hue saturation control
Dimming	0-100% continuous
White light	Continuously adjustable 2800K to 10000K
CRI, TLCI	CRI ≥95, TLCI ≥91
Color temperature error	± 200K
Remote control	DMX 512, Remote control, Mobile APP
Power input	AC100-240V
Power output	1400W max
Working temperature	-4 to 113° F (-20°C to 45°C)
Protection level	IP20
LED lifetime	Up to 50,000 hours
Weight	143lbs (65kg)
Dimensions	58in x 44in x 7.2in (147.5x112x18.2cm)

[Characteristics:]

- Fully adjustable color temperature from 2800K to 10000K.
- Complete 0-360° color selection (RGB+W color gamut).
- Fully dimmable from 0 to 100%.
- Multiple pre-programmed scenes and effects.
- High CRI ≥95 and TLCI ≥91.
- With USB automatic upgrade function, easy to add subsequent functions.
- Mobile APP is available to adjust various parameters of the light.
- DMX 512 compatible.
- Suitable for TV and movie shooting, various scene photography.



HUESCAPE LED RGB LIGHT

HS-600S

NEW



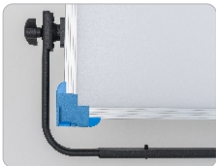
LED diffusion	Lishuai Huescape Technology
Front diffuser panel	42x75cm
Beam angle	120°
Color light	Full RGB+W gamut with hue saturation control
Dimming	0-100% continuous
White light	Continuously adjustable 2800K to 10000K
CRI, TLCI	CRI ≥ 95, TLCI ≥ 91
Color temperature error	± 200K
Remote control	DMX 512, Remote control, Mobile APP
Power input	AC100-240V, 50/60Hz, DC48V
Power output	600W max
Working temperature	-4 to 113° F (-20°C to 45°C)
Protection level	IP20
LED lifetime	Up to 50,000 hours
Weight	47.6lbs (21.6kg)
Dimensions	36.2in x 21.5in x 7.2in (92x54.4x18.2cm)



HUESCAPE LED RGB LIGHT

HS-600

LED diffusion	Lishuai Huescape Technology
Front diffuser panel	30x130cm
Beam angle	120°
Color light	Full RGB+W gamut with hue saturation control
Dimming	0–100% continuous
White light	Continuously adjustable 2800K to 10000K
CRI, TLCI	CRI ≥ 95, TLCI ≥ 91
Color temperature error	± 200K
Remote control	DMX 512, Remote control, Mobile APP
Power input	AC100–240V, 50/60Hz, DC48V
Power output	600W max
Working temperature	–4 to 113° F (–20°C to 45°C)
Protection level	IP20
LED lifetime	Up to 50,000 hours
Weight	57.3lbs (26kg)
Dimensions	57.9in x 20.4in x 7.2in (147x51.8x18.2cm)



[Characteristics:]

- All-aluminum frame makes it to have better heat dissipation and longer working life.
 - Fully adjustable color temperature from 2800K to 10000K.
 - Complete 0-360° color selection (RGB+W color gamut).
 - Fully dimmable from 0 to 100%.
 - Multiple pre-programmed scenes and effects.
 - High CRI ≥ 95 and TLCI ≥ 91.
 - With USB automatic upgrade function, easy to add subsequent functions.
 - Mobile APP is available to adjust various parameters of the light. DMX 512 compatible.
- Suitable for film and TV shooting, studio, advertising shooting, shooting of various characters and scenes, including portrait photography, wedding photography, childrens' photography, etc.

HUESCAPE LED RGB LIGHT

HS-120

LED diffusion	Lishuai Huescape Technology
Front diffuser panel	48x25cm
Beam angle	120°
Color light	Full RGB+W gamut with hue saturation control
Dimming	0–100% continuous
White light	Continuously adjustable 2800K to 10000K
CRI,TLCI	CRI:95–98,TLCI:95–97
Color temperature error	± 100K
Remote control	DMX 512,Remote control,Mobile APP
Power input	AC100–240V,50/60Hz,DC15V
Power output	120W max
Battery mount	V-lock plate
Battery voltage	DC12–17V
Battery mode power output	0–80%
Working temperature	–4 to 113° F (–20°C to 45°C)
Protection level	IP20
LED lifetime	Up to 50,000 hours
Weight	14.3lbs (6.47Kg)without adapter, 15.8lbs (7.17Kg) with adapter
Dimensions	26.4in x 18.7in x 3.1in (67x47.5x8cm)



[Characteristics:]

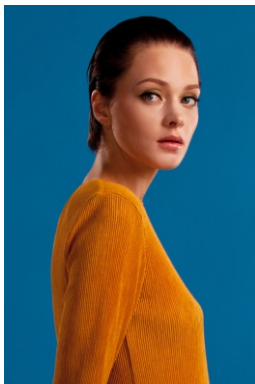
- All-aluminum frame makes it to have better heat dissipation and longer working life.
 - Fully adjustable color temperature from 2800K to 10000K.
 - Complete 0-360° color selection (RGB+W color gamut).
 - Fully dimmable from 0 to 100%.
 - Multiple pre-programmed scenes and effects.
 - High CRI 95-98 and TLCI 95-97.
 - External battery can be loaded for outside using.
 - With USB automatic upgrade function, easy to add subsequent functions.
 - Use LCD screen display to facilitate users to observe data.
 - LED heat-free technology assures the stable, consistent and accurate lighting output.
 - Mobile APP is available to adjust various parameters of the light. DMX 512 compatible.
- Suitable for film and TV shooting, studio, advertising shooting, shooting of various characters and scenes, including portrait photography, wedding photography, childrens' photography, etc.

HUESCAPE LED RGB LIGHT



HS-150

LED diffusion	Lishuai Huescape Technology
Front diffuser panel	30x30cm
Beam angle	120°
Color light	Full RGB+W gamut with hue saturation control
Dimming	0-100% continuous
White light	Continuously adjustable 2800K to 10000K
CRI, TLCI	CRI ≥ 95, TLCI ≥ 91
Color temperature error	± 200K
Remote control	DMX 512, Remote control, Mobile APP
Power input	AC100-240V, 50/60Hz, DC15V
Power output	150W max
Battery mount	V-lock plate
Battery voltage	DC12-17V
Battery mode power output	0-80%
Working temperature	-4 to 113° F (-20°C to 45°C)
Protection level	IP20
LED lifetime	Up to 50,000 hours
Weight	25.4lbs (11.5kg)
Dimensions	18.5in x 20.4in x 7.2in (47x51.8x18.2cm)



HUESCAPE LED RGB LIGHT

HS-300



LED diffusion	Lishuai Huescape Technology
Front diffuser panel	30x60cm
Beam angle	120°
Color light	Full RGB+W gamut with hue saturation control
Dimming	0–100% continuous
White light	Continuously adjustable 2800K to 10000K
CRI, TLCI	CRI ≥ 95, TLCI ≥ 91
Color temperature error	± 200K
Remote control	DMX 512, Remote control, Mobile APP
Power input	AC100–240V, 50/60Hz, DC30V
Power output	320W max
Battery mount	V-lock plate
Battery voltage	DC24–36V
Battery mode power output	0–80%
Working temperature	–4 to 113° F (–20 to 45°C)
Protection level	IP20
LED lifetime	Up to 50,000 hours
Weight	38.6lbs (17.5kg)
Dimensions	28.4in x 20.4in x 7.2in (72x51.8x18.2cm)



✓ Scene simulation

✓ 5B color output

✓ Mobile APP remote control

✓ 95+ CRI

HUESCAPE LED RGB LIGHT

HS-700R



LED diffusion	Lishual Huescape Technology
Front diffuser panel	φ 40.7cm
Beam angle	120°
Color light	Full RGB+W gamut with hue saturation control
Dimming	0–100% continuous
White light	Continuously adjustable 2800K to 10000K
CRI, TLCI	CRI ≥ 95, TLCI ≥ 91
Color temperature error	± 200K
Remote control	DMX 512, Remote control, Mobile APP
Power input	AC100–240V, 50/60Hz, DC15V
Power output	100W max
Battery mount	V–lock plate
Battery voltage	DC12–17V
Battery mode power output	0–80%
Working temperature	–4 to 113° F (–20 to 45°C)
Protection level	IP20
LED lifetime	Up to 50,000 hours
Weight	7.78lbs (3.53Kg) without adapter, 9.41lbs (4.27Kg) with adapter
Dimensions	20in x 22in x 3in (51x56x7.5cm)





High Power LED Panel Light

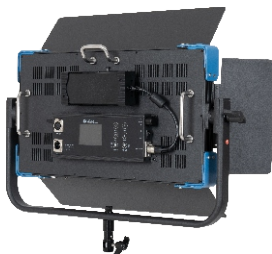


**LISHUAI FILM &
TELEVISION EQUIPMENT**

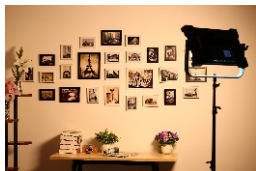
HIGH POWER LED PANEL LIGHT

C200

NEW



LED	1200pcs of ultra bright LEDs
Illuminance	2672Lux/1m, 747Lux/2m
Beam angle	120°
Color temperature	2800 ± 150K - 6500 ± 300K
CRI, TLCI	≥ 96
Output power	120W
Working voltage	AC100-240V, DC15V
Dimension	63x13x44cm
Weight	4.9kg
Accessories included	AC power adapter 144W, Barndoor, Power cord, DMX cable, Safety cable
Accessories for option	Honeycomb grid, Soft bag



HIGH POWER LED PANEL LIGHT



C400

LED	2400pcs of ultra bright LEDs
Illuminance	4146Lux/1m, 1244Lux/2m
Beam angle	120°
Color temperature	2800 ± 150K - 6500 ± 300K
CRI, TLCI	≥96
Output power	200W
Working voltage	AC100-240V, DC25.6V-33.6V
Dimension	105.6x33.5x13.3cm
Weight	10.5kg
Accessories included	Barndoor, Power cord, DMX cable, Safety cable
Accessories for option	Honeycomb grid, Soft bag

Main Features

- High CRI ≥ 96 and TLCI ≥ 96.
- LCD displays brightness, color temperature and DMX address in real time.
- Brightness dimmable from 10% to 100% and color temperature adjustable from 2800K to 6500K.
- Wide beam angle 120°, larger lighting area.
- DMX function available.
- Using all-aluminum frame, for better heat dissipation.
- Both AC power supply and battery power supply are workable.



HIGH POWER LED PANEL LIGHT



P-1580ASVL

Main Features

- High CRI:95-98 and TLCI ≥ 95 .
- LCD displays brightness, color temperature and DMX address in real time.
- Brightness dimmable from 10% to 100% and color temperature adjustable from 3200K to 5600K.
- Wide beam angle 120°, larger lighting area.
- DMX function available.
- Using all-aluminum frame, for better heat dissipation.
- Both AC power supply and battery power supply are workable.



LED	1200pcs of ultra bright LEDs
Illuminance	2565Lux/1m, 935Lux/2m
Beam angle	120°
Color temperature	3200 \pm 150K - 5600 \pm 300K
CRI	Ra: 95-98
TLCI	≥ 95
Output power	120W
Working voltage	AC100-240V, DC12-24V
Dimension	61.5x49x9.5cm
Weight	5.42kg
Accessories included	AC power adapter 144W, Barn door, Power cord, DMX cable, Safety cable
Accessories for option	Honeycomb grid, Soft bag



HIGH POWER LED PANEL LIGHT



P-1380AVL, P-1380ASVL

Size	63x13x44cm
Weight	4.9kg
Power	100W
Voltage range	AC100V-240V, DC15V
Color temperature	P-1380AVL: 5600K(±300K) P-1380ASVL: 3200K(±150K)-5600K(±300K)
Illuminance	2450Lux/m, 670Lux/2m
Accessories	AC power adapter, Barndoor, DMX cable, Safety cable, Power cord



P-1380A(S)VLK-2

- 2 x P-1380A(S)VL
- 2 x Barndoors
- 2 x AC power adapter
- 2 x Power cord
- 2 x DMX cable
- 2 x Safety cable
- 4 x Velcro strap
- 1 x Aluminum case



P-2400AVL, P-2400ASVL

Size	105.6x33.5x13.3cm
Weight	10.5kg
Power	200W
Voltage range	AC100V-240V or DC25.6V-33.6V
Color temperature	P-2400AVL: 5600K(±300K) P-2400ASVL: 3200K(±150K)-5600K(±300K)
Illuminance	4912Lux/1m, 1167Lux/2m
Accessories	Barndoor, DMX cable, Safety cable, Power cord



**LISHUAI FILM &
TELEVISION EQUIPMENT**



Victorsoft
High Power LED Light

VICTORSOFT HIGH POWER LED LIGHT



VictorSoft 1x1

V-2000ASVL

Size	45X55X9cm
Weight	6.4kg
Power	100W
Voltage	AC100V - 240V, DC15V
Color temperature	3200K(±150K)~5600K(±300K)
Illuminance	2565Lux/m, 685Lux/2m
Accessories	Barndoor, AC power adapter, Power cord, DMX cable, Safety cable

VictorSoft 1x2

V-4000ASVL

Size	70X55X9cm
Weight	9.09kg
Power	200W
Voltage	AC100V - 240V, DC24V - 30V
Color temperature	3200K(±150K)~5600K(±300K)
Illuminance	4695Lux/m, 1425Lux/2m
Accessories	Barndoor, AC power adapter, Power cord, DMX cable, Safety cable



VICTORSOFT HIGH POWER LED LIGHT



VictorSoft 1x4

V-6000ASVL

Size	38X117.5X15cm
Weight	15.27kg
Power	300W
Voltage	AC100V - 240V, DC24V - 30V
Color temperature	3200K(±150K)~5600K(±300K)
Illuminance	7430Lux/m, 2185Lux/2m
Accessories	Barndoor, AC power adapter, Power cord, DMX cable, Safety cable



VictorSoft 12

VR-1200ASVL

Size	40.5X46X9.5cm
Weight	3.7kg
Power	55W
Voltage	AC100V - 240V, DC13V - 17V
Color temperature	3200K(±150K)~5600K(±300K)
Illuminance	1582Lux/m, 422Lux/2m
Accessories	AC power adapter, Power cord, DMX cable, Safety cable



VictorSoft 18

VR-2500ASVL

Size	55X60X9.5cm
Weight	6.7kg
Power	100W
Voltage	AC100V - 240V, DC13V - 17V
Color temperature	3200K(±150K)~5600K(±300K)
Illuminance	2867Lux/m, 779Lux/2m
Accessories	AC power adapter, Power cord, DMX cable, Safety cable



**LISHUAI FILM &
TELEVISION EQUIPMENT**

LED Edge Light



LED EDGE LIGHT



Features

- Ultra- large round design, giving large lighting area.
- It adopts SMD LED, with soft and even light, much more like natural light.
- Elegant slim design.
- Aluminum housing, perfect heat dissipation.

C-700RSV

Size	φ 520x50mm
Weight	2.85kg
Power	60W
Voltage range	DC14.8V -16.8V
Color temperature	3200K(±200K)~5600K(±300K)
Illuminance	1065Lux/m, 350Lux/2m
Accessories	6600mAh Battery, Battery charger, AC power adapter, Power cord, Safety cable, Carrying case

C-1500RSV

Size	φ 800x87mm
Weight	9.23kg
Power	120W
Voltage range	AC100V~240V, DC13V~17V
Color temperature	3200K(±150K)~5600K(±300K)
Illuminance	1900Lux/m, 655Lux/2m
Accessories	AC power adapter, Power cord, Safety cable

C-1180ASV

Size	1260x292x95mm
Weight	7.3kg
Power	AC100V~240V, DC13V~17V
Voltage range	100W
Color temperature	3200K(±150K)~5600K(±300K)
Illuminance	3116Lux/0.5m, 1275Lux/m(3200K) 3535Lux/0.5m, 1458Lux/m(5600K)
Accessories	Barndoor, AC power adapter, Power cord, Safety cable, Carrying case



C-518ASV

Size	365x400x50mm
Weight	2.08kg
Power	40W
Voltage range	DC14.8V -16.8V
Color temperature	3200K(±200K)~5600K(±300K)
Illuminance	2000Lux/0.5m, 623Lux/m
Accessories	4400mAh battery, Battery charger, AC power adapter, Power cord, Safety cable, Carrying case

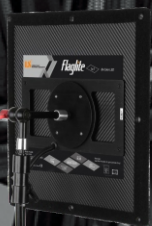


C-300RS

Size	φ260x46mm
Weight	0.74kg
Power	30W
Voltage range	DC7.4V - 14.8V
Color temperature	3200K(±200K)~5600K(±300K)
Illuminance	2050Lux/0.5m, 570Lux/m
Accessories	4400mAh battery, Battery charger, Car charger, Carrying case, AC power adapter, power cord



**LISHUAI FILM &
TELEVISION EQUIPMENT**



LED FODLDABLE LIGHT

LED FODLDABLE LIGHT



FL50BI

FL50K-2 Lighting kit

FL50BI x 2pcs
Power control box x 2pcs
Soft diffuser x 2pcs
Metal mounting plate x 2pcs
DC power cable x 2pcs
AC power cable x 2pcs
Kit bag x 1pc

FL50K-3 Lighting kit

FL50BI x 3pcs
Power control box x 3pcs
Soft diffuser x 3pcs
Metal mounting plate x 3pcs
DC power cable x 3pcs
AC power cable x 3pcs
Kit bag x 1pc



FL70BI

FL70K-2 Lighting kit

FL70BI x 2pcs
Power control box x 2pcs
Soft diffuser x 2pcs
Metal mounting plate x 2pcs
DC power cable x 2pcs
AC power cable x 2pcs
Kit bag x 1pc

FL70K-3 Lighting kit

FL70BI x 3pcs
Power control box x 3pcs
Soft diffuser x 3pcs
Metal mounting plate x 3pcs
DC power cable x 3pcs
AC power cable x 3pcs
Kit bag x 1pc



FL50BI, FL70BI

MODEL	FL50BI	FL70BI
SPEC		
LED	256pcs ultra bright chip LEDs	396pcs ultra bright chip LEDs
Brightness	2800K: 1300Lux/1m, 352Lux/2m 6500K: 1439Lux/1m, 379Lux/2m	2800K: 1816Lux/1m, 496Lux/2m 6500K: 2036Lux/1m, 539Lux/2m
Beam angle	120°	
Color temperature	2800 ± 150K – 6500 ± 200K	
CRI	Ra: 96–98	
TLCI	≥ 96	
Power	50W	70W
Working voltage	AC100–240V, DC13–17V	
Dimension (for light body)	13.2x13.2x0.8in (33.5x33.5x2cm)	20.9x12x0.8in (53x30.5x2cm)
Dimension (for power control box)	9.3x5.5x2.37in (23.5x14x6.9cm)	
Weight (for light body)	3.08lbs (1.4kg)	3.63lbs (1.65kg)
Weight (for Power control box)	2.87lbs (1.3kg)	
Accessories	Soft diffuser, AC power cable, DC power cable, Remote control, bag	

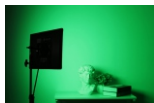
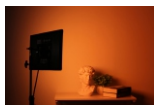


LED FOLDABLE LIGHT



HS-50, HS-70

SPEC	MODEL	HS-50	HS-70
Optical system		Soft diffuser panel	
Front diffuser panel		30x30cm	49x26.5cm
Beam angle		120°	
Color light		Full RGB+ WT color gamut with hue saturation control	
Dimming		10-100% continuous dimmable	
White light		2800K-10000K color temperature continuous adjustable	
CRI		93-98	
TLCI		95-97	
Color temperature error		±200K	
Power input		AC100-240V, 50/60HZ, DC13-17V	
Working temperature		-20°C-45°C	
Protection level		IP20	
LED lifetime		50000 hrs approx.	
Power output		50W	70W
Dimension		13.2x13.2x0.8in(33.5x33.5x2cm)	20.9x12x0.8in(53x30.5x2cm)
Dimension(for Power control box)		10.4x5.7x3.35in (26.4x14.1x8.5cm)	
Weight		3.1Lbs (1.4kg)	3.63Lbs (1.65kg)
Weight (for Power control box)		3.35Lbs(1.52kg)	
Accessories		White diffuser, Power control box, Metal mounting plate, AC power cable, DC power cable, bag	
Optional accessory		Remote control	



LED FOLDABLE LIGHT

FL150,FL150L



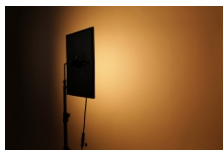
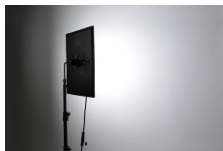
FL150



FL150L

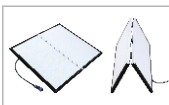


MODEL	FL150	FL150L
LED	784pcs ultra bright chip LEDs	
Illuminance	2800K: 3500Lux/1m, 1020Lux/2m	2800K: 3220Lux/1m, 1000Lux/2m 6500K: 4040Lux/1m, 1180Lux/2m
Beam angle	120°	
Color temperature	2800 ± 150K - 6500 ± 200K	
CRI	Ra: 96-98	
TLCI	≥ 96	
Power	150W	
Working voltage	AC100-240V, DC13-17V	
Dimension (for unfolded light body)	20.4x22x1.2in (52x56x3cm)	40.1x11.8x1.2in (102x30x3cm)
Dimension (for folded light body)	20.4x11.4x1.9in (52x29x4.8cm)	20.4x11.8x1.9in (52x30x4.8cm)
Dimension (for power control box)	5.6x10.6x3.27in(14.2x27x8.3cm)	
Weight (for light body)	6.5 lbs (2.96kg)	6 lbs (2.75kg)
Weight (for Power control box)	3.36 lbs(1.525kg)	
Accessories	Softbox, Power control box, Ball head bracket, DC power cable, AC power cable, Remote control, Carrying case	
Optional accessories	Grid	

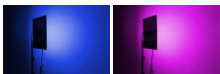
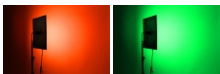


LED FOLDABLE LIGHT

HS-Q150



Name	HS-Q150
Optical system	Diffusion panel
Light emission surface	19.3x20.9in(49x53cm)
Beam angle	120°
Color	Full RGB+WT spectrum with hue saturation control
Intensity / Brightness	Continuously adjustable 0-100%
White light	Adjustable 2800K-10000K
CRI	93-98
TLCI	95-97
Color temperature error	± 200K
Remote control	DMX 512, Remote control, Mobile APP
Power input	AC100-240V, 50/60Hz, DC13-17V
Power output	150W
Working temperature	-20°C-45°C
Protection	IP20
LED lifetime	50,000 hours
Dimension for unfolded light body	20.4x22x1.2in (52x56x3cm)
Dimension for folded light body	20.4x11.4x1.9in (52x29x4.8cm)
Dimension for power control box	15x5.6x3.2in (38x14.2x8.3cm)
Weight for light body	6.8 lbs (3.12kg)
Weight for power control box	4 lbs (1.825kg)
Accessories	Softbox, Power control box, Ball head bracket, DC power cable (control box to light unit), Power cable, DMX cable, Carrying case
Optional accessories	Remote control, Grid

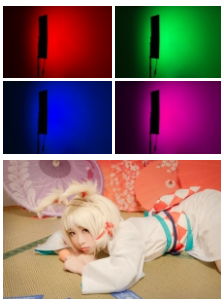


LED FOLDABLE LIGHT

HS-Q150L



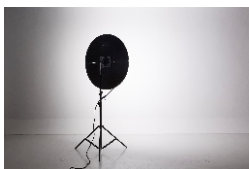
Name	HS-Q150L
Optical system	Diffusion panel
Light emission surface	38.8x10.2in(98.5x26cm)
Beam angle	120°
Color	Full RGB-WT spectrum with hue saturation control
Intensity/ Brightness	Continuously adjustable 0-100%
White light	Adjustable 2800K-10000K
CRI	93-98
TLCI	95-97
Color temperature error	±200K
Remote control	DMX 512, Remote control, Mobile APP
Power input	AC100-240V, 50/60Hz, DC13-17V
Power output	150W
Working temperature	-20℃-45℃
Protection	IP20
LED lifetime	50,000 hours
Dimension for unfolded light body	40.1x11.8x1.2in (102x30x3cm)
Dimension for folded light body	20.4x11.8x1.9in (52x30x4.8cm)
Dimension for power control box	14.9x5.5x3.2in (38x14.2x8.3cm)
Weight for light body	6.8 lbs (3.12kg)
Weight for power control box	4 lbs (1.825kg)
Accessories	Softbox, Power control box, Ball head bracket, DC power cable (control box to light unit), Power cable, DMX cable, Carrying case
Optional accessories	Remote control, Grid



LED FOLDABLE LIGHT

FL1500R

LED	LED2044pcs of ultra bright chip
Illuminance	2800K: 6680Lux/1m, 2080Lux/2m 6500K: 6720Lux/1m, 2120Lux/2m
Beam angle	120°
Color temperature	2800 ± 150K – 6500 ± 200K
CRI	Ra:96-98
TLCI	≥96
Power	260W
Working voltage	AC100-240V, DC24-30V
Dimension for unfolded light body	φ35.4x12in (φ90x30cm)
Dimension for folded light body	35.4x18.1x1.9in (90x46x4.8cm)
Dimension for power control box	5.6x18.9x3.3in (14.2x48x8.3cm)
Weight for light body	13.7lbs (6.2kg)
Weight for power control box	7.9lbs (3.6kg)
Accessories	Softbox, Power control box, Ball head bracket, DC power cable, AC power cable, Carrying case, Remote control



[Characteristics:]

- High CRI 96-98 and TLCI ≥96
 - Foldable, easy to carry.
 - External battery can be equipped on power control box, convenient for outdoor use.
 - LCD shows real-time brightness and color temperature.
 - The solid metal ballhead bracket makes it possible to adjust the light freely.
 - Brightness dimmable from 10% to 100% and color temperature adjustable from 2800K to 6500K.
- Suitable for indoor and outdoor photography and videography, studio or location shooting.

LED FOLDABLE LIGHT

HS-1500R

Optical system	Diffusion panel
Light emission surface	φ 35.4in (φ 90cm)
Beam angle	120°
Color	Full RGB+WT spectrum with hue saturation control
Intensity / Brightness	Continuously adjustable 0–100%
White light	Adjustable 2800–10000K
CRI	93–98
TLCI	95–97
Color temperature error	± 200K
Remote control	DMX 512, Remote control, Mobile APP
Power input	AC100–240V, 50/60Hz, DC13–24V
Power output	260W
Working temperature	–20°C–45°C
Protection	IP20
LED lifetime	50,000 hours
Dimension for unfolded light body	Φ 35.4x12in (Φ 90x30cm)
Dimension for folded light body	35.4x18.1x1.9in (90x46x4.8cm)
Dimension for power control box	5.6x14.9x4.2in (14.2x38x10.6cm)
Weight for light body	14.5lbs (6.585kg)
Weight for power control box	7.8lbs (3.52kg)
Accessories	Softbox, Power control box, Ball head bracket, DC power cable (control box to light unit), Power cable, DMX cable, Carrying case
Optional accessories	Remote control



[Characteristics:]

- Standardized color temperature with a CRI 93-98 and TLCI 95-97.
- 0–360° HSI color selection (RGB+WT color gamut).
- Multiple pre-programmed scenes and effects.
- Flicker-free and uniformly dimmable from 0% to 100%.
- Color temperature is adjustable from 2800K to 10000K.

This easy to carry, foldable light is made of PC hollow material with a metal heat sink. It is designed with a metal edge for enhanced durability.

- The solid metal ball head bracket allows the light to be securely mounted and easily adjusted.
- USB for future firmware updates and feature additions.
- Easy to use softbox featuring a snap-on design.
- Provides stable, consistent output while remaining heat free.
- DMX512 compatible

Mobile APP is available to adjust various parameters of the light. Suitable for indoor and outdoor photography and videography. Great for studio or location shoots including TV, film, portrait photography, etc.





**LISHUAI FILM &
TELEVISION EQUIPMENT**

LED PANEL LIGHT

LED PANEL LIGHT



LED800X

Light size	35.9x23.4x7.7cm
Overall size	41.9x43.8x7.7cm
Beam angle	60°
Weight	2.57kg(w/o barndoor), 3.14kg(w/barndoor)
Power	80W
Voltage	AC100V-240V, DC12V-17V
Color temperature	3200K(±200K)–5600K(±300K)
Illuminance	5600K:2580Lux/1m, 690Lux/2m 3200K:2200Lux/1m, 590Lux/2m
Accessories	Barndoor, Diffusion panel, White diffusion panel, AC power adapter 12V 60W, Remote controller, Safety cable, Power cord, Carrying case



LED650AS

Light size	35.9x23.4x7.2cm
Overall size	41.9x43.8x7.2cm
Beam angle	45°
Weight	2.19kg(w/o barndoor), 2.76kg(w/barndoor)
Power	39W
Voltage	DC12V-17V
Color temperature	3200K(±200K)–5600K(±300K)
Illuminance	1877Lux/m, 516Lux/2m(5600K) 1523Lux/m, 430Lux/2m(3200K)
Accessories	2200mAh lithium battery, Battery charger, Charger adapter 12V 1A, AC power adapter 12V 40W, Safety cable, Power cord



LED680ASV

Light size	35.9x23.4x7.2cm
Overall size	41.9x43.8x7.2cm
Beam angle	45°
Weight	2.57kg(w/o barndoor), 3.14kg(w/barndoor)
Power	39W
Voltage	AC100V-240V, DC12V-17V
Color temperature	3200K(±200K)–5600K(±300K)
Illuminance	2370Lux/m, 665Lux/2m(5600K) 1946Lux/m, 528Lux/2m(3200K)
Accessories	Barndoor, Diffusion panel, AC power adapter 12V 40W, Remote controller, Safety cable, Power cord



LED1300ASV

Light size	35.9x38.9x7.7cm
Overall size	41.9x52.1x7.7cm
Beam angle	45°
Weight	3.47kg(w/o barndoor), 4.44kg(w/barndoor)
Power	78W
Voltage	AC100V-240V, DC12V-17V
Color temperature	3200K(±200K)–5600K(±300K)
Illuminance	4330Lux/m, 1247Lux/2m(5600K) 3825Lux/m, 1076Lux/2m(3200K)
Accessories	Barndoor, Diffusion panel, AC power adapter 15V 60W, DMX cable, Safety cable, Power cord



LISHUAI FILM & TELEVISION EQUIPMENT



Lens Adapter: 49mm 52mm 55mm 58mm
62mm 67mm 72mm 77mm

LED48A

Size	149x114x26mm
Weight	129g
Power	2.88W
Voltage	DC5V - 14.8V
Color temperature	5600K(±300K) or 3200K(±200K)
Illuminance	650Lux/0.5m, 180Lux/m



LED98A

Size	121x78x35mm
Weight	140g
Voltage	DC7.4V - 14.8V
Power	5.88W
Color temperature	5600K(±300K)
Illuminance	450Lux/m
Power supply	Lithium battery

LED ON-CAMERA LIGHT



LED144AS

Size	135x85x35mm
Weight	200g
Power	8.64W
Voltage	DC7.4V - 14.8V
Color temperature	3200K(±200K)-5600K(±300K)
Illuminance	352Lux/m(3200K) 352Lux/m(5600K)



LED209AS

Size	158x105x35mm
Weight	230g
Power	12.54W
Voltage	DC7.4V - 14.8V
Color temperature	5600K(±300K)or3200K(±200K) 3200K(±200K)-5600K(±300K)
Illuminance	460Lux/m(3200K) 540Lux/m(5600K)



LED312AS

Size	190x115x35mm
Weight	350g
Power	18.72W
Voltage	DC7.4V - 14.8V
Color temperature	5600K(±300K)or3200K(±200K) 3200K(±200K)-5600K(±300K)
Illuminance	796Lux/m(3200K) 822Lux/m(5600K)



LED312DS

Size	201x123x55mm
Weight	400g
Power	18.72W
Voltage	DC7.4V - 14.8V
Color temperature	3200K(±200K)-5600K(±300K)
Illuminance	1100Lux/m(3200K), 1530Lux/m(5600K)

ACCESSORIES

Ball head



CA100



CA101A



CA101B



CA102B



CA109A

Hotshoe Adapter



CA103A

Adapter



CA106

Atom Clamp



CA107

Clamp with Ball Head



CA104MC



CA105MC

Hotshoe Base



CA108

Super Clamp



CA114

Adjustable Gaffer Clamp



CA111

Adjustable Gaffer Clamp
5/8" Pin & 5/8" Receiver



CA115

Clamp



CA113

Pelican Gaffer Grip
5/8" Pin & 5/8" Receiver



CA116

Pipe Clamp 5/8" Pin



CA118

Swiveling Pipe Clamp



CA39B

Magic arm



CA1950
-Length: 19.5cm
-Weight: 195g



CA2800
-Length: 28cm
-Weight: 250g

Articulated Arm



CA1020



CA2550

2" End Jaw Clamp with
5/8" Pin & Hex socket



CA1120A

6" End Jaw Clamp with 5/8" Pin



CA1132B

3" End Jaw
Clamp with 5/8" Pin



CA1120E

10" End Jaw Clamp
with 5/8" Pin & Hex socket



CA1142C

1" End Jaw Clamp with
5/8" Pin & Hex socket



CA1132D

Stud



1/4" & 3/8"

Camera bracket



Ca280 Length: 28cm



Ca150 Length: 15cm

ACCESSORIES

Battery Mount Plate



ZJ-01

SV001

AB002

Cable



D-TAP

130W/H Battery & Charger



SV130

Locking Wheel Set



M11-016

Mini Stand



CA072



CA072A

Accessories for LED Sport Light



RB28

28X19cm
with Bowers mount



RP20

19.8X17.8cm
with Profoto mount



LD20

20X6cm,
120degree,
with Bowers mount



RP27

27X27cm
with Profoto mount



RB39

Depth39cm,
with Bowers mount



BS-M18

18X24cm
for Bowers adapter



BS11

11X20cm
with Bowers mount



AD-B12

12X6cm
J-500V2 adapter
with Bowers mount



AD-PB13

13X10cm
Light adapter with Profoto
and Bowers mount



LD41

41cm
with Bowers mount

LIGHT STAND

LS-320T

Section 3

	323cm
	138cm
	120cm
	2.7kg
	5kg



LS-300T

Section 3

	300cm
	122cm
	104cm
	2.1kg
	5kg



LS-280T

Section 4

	280cm
	96cm
	84cm
	1.8kg
	3kg



LS-260T

Section 3

	260cm
	106cm
	91cm
	1.7kg
	4kg



LS-220T

Section 4

	220cm
	78.5cm
	69cm
	1.5kg
	3kg



LS-200T

Section 3

	200cm
	81cm
	71cm
	1kg
	2.5kg



LS-256T

Section 3

	256cm
	109cm
	98cm
	2.2kg
	6kg



LS-288T

Section 3

	280cm
	100cm
	95.5cm
	2.8kg
	4kg



LS-60T

Section 2

	60cm
	36.5cm
	10.5cm
	1.05kg
	5kg



LIGHT STAND

LS-1700T

Section 4

	170cm
	55cm
	55cm
	1.18kg
	3kg



LS-2000T

Section 3

	200cm
	48.5cm
	48.5cm
	1.1kg
	2.5kg



LS-2100T

Section 4

	215cm
	59cm
	59cm
	1.5kg
	5kg



LS-190S

Section 4

	198cm
	95cm
	75cm
	1.25kg
	2.5kg



LS-250S

Section 3

	250cm
	110cm
	92cm
	1.65kg
	2.5kg



LS-200G

Section 4

	200cm
	62cm
	50cm
	1.3kg
	2.5kg



LS-220G

Section 3

	222cm
	62cm
	49cm
	1.5kg
	2.5kg



LS-35F

Section 3

	35cm
	35cm
	53cm
	5.2kg
	30kg



LS-220F

Section 3

	220cm
	131cm
	121cm
	6kg
	10kg



LIGHT STAND

LS-226F

Section 4

	226cm
	115cm
	93cm
	11.5kg
	15kg



LS-320F

Section 3

	310cm
	125cm
	118cm
	5.5kg
	10kg



LS-580F

Section 3

	583.5cm
	195cm
	180cm
	18kg
	20kg



C stand C-328

Section 3

	328cm
	145cm
	145cm
	7.5kg
	10kg



LS-280LS

Section 3

	284cm
	130cm
	105cm
	4.6kg
	8kg



LS-300Y

Section 4

	300cm
	90cm
	90cm
	2.4kg
	3kg



LS-380Y

Section 4

	380cm
	130cm
	115cm
	3.28kg
	10kg



LS-390B

Section 4

	395cm
	132cm
	114cm
	3.58kg
	3kg



LS-490B

Section 5

	492cm
	136cm
	119cm
	4.3kg
	4kg



LIGHT STAND

LS-400BS

LS-530BS

LS-210FS

Section 5



408cm



149cm



142cm



18.8kg



10kg



Section 5



532cm



168cm



172cm



22.1kg



10kg



Section 3



210cm



107cm



107cm



6.3kg



12kg



LS-310FS

LS-410FS

LS-340FS

Section 3



310cm



140cm



140cm



8kg



12kg



Section 4



410cm



144cm



144cm



8.3kg



12kg



Section 3



340cm



148.2cm



134cm



8.25kg



40kg



Section 2



370cm



224cm



224cm



23.4kg



30kg



BM-370



BS-280

2 x 280cm light stand (with adapter)

1 x 3m cross bar

1 x kit bag

BS-300

2 x 300cm light stand (with adapter)

1 x 3m cross bar

1 x kit bag

BAG & CASE



B2000



B4000



B6000



C5183



B13801



C13802



B280/B288



B300-3



CC16

inner diameter : 80x31x24cm
outer diameter : 88x35x28cm



CC06

inner diameter : 103x34x25cm
outer diameter : 110x38x30cm



CC02

inner diameter : 124x34x22cm
outer diameter : 139x39x31cm

YUYAO LISHUAI FILM &
TELEVISION EQUIPMENT CO.,LTD

Add:No.55 East Zhenxing Road,Yuyao City,Zhejiang Province,China

Tel:+86-574-62763333/62636368 Fax:+86-574-62636398

Email:ls@lishuai.com.cn

Http:// www.lishuai-lighting.com www.led-studiolights.com