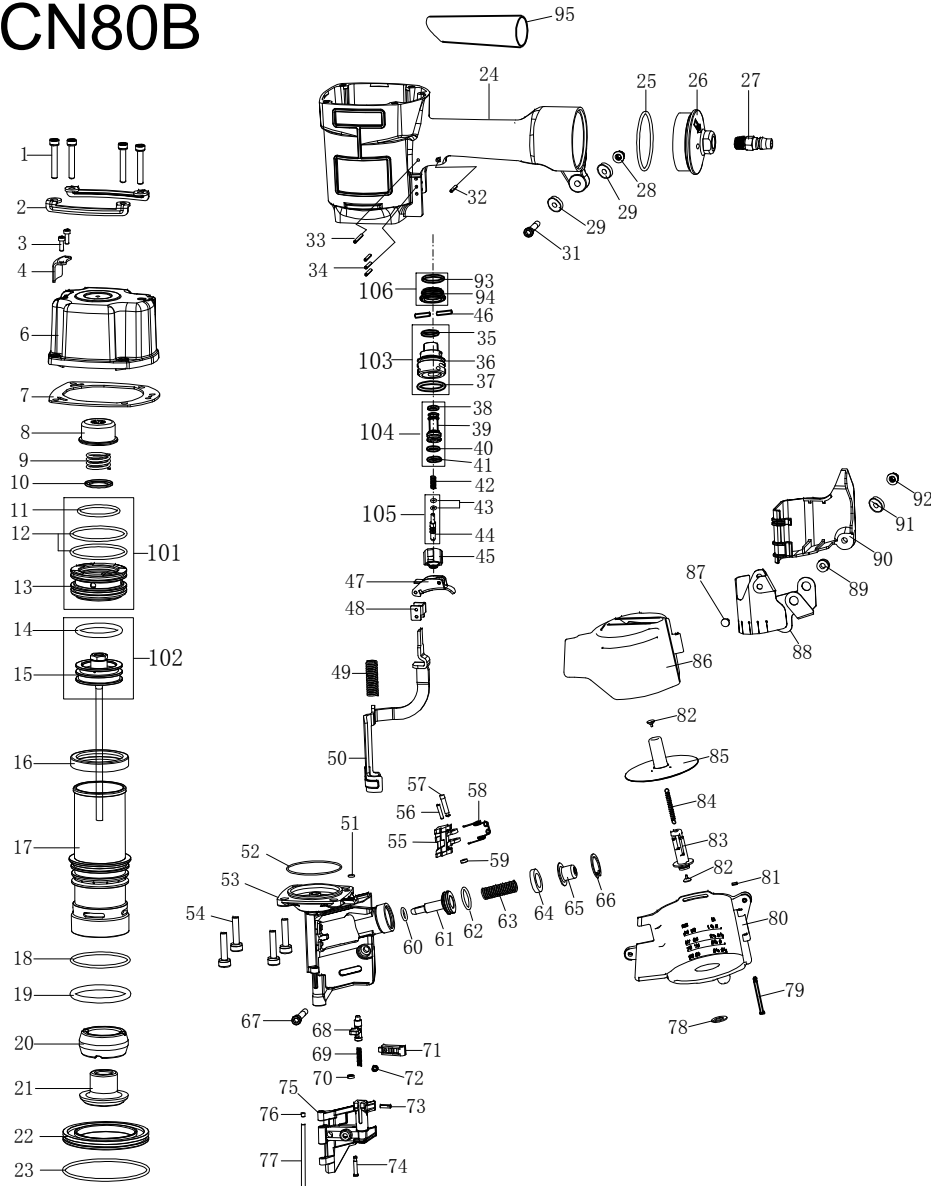


# SERIES EXPLODED VIEWS OF NAILER

## CN80B



ITEM NO.	PART NO	PART NAME	Q' TY	ITEM NO.	PART NO	PART NAME	Q' TY
1	B01-01-060300-02	SCREW	4	53	AA61A-001A	MUZZLE	1
2	AA42A-001A	PROTECTOR	2	54	B01-01-080300-02-NL	SCREW	4
3	B01-01-040120-02	SCREW	2	55	AA61A-008A	FEED PAWL	1
4	AA61A-007A	EXHAUST COVER	1	56	B02-030160-02	ROLL PIN	1
6	AA61A-Y07A1	CYLINDER CAP	1	57	AA40A-032A	STEP PIN	1
7	AA42A-003A	CYLINDER CAP SEAL	1	58	AA40A-067A	SPRING	1
8	AA42A-004A	AIRPROOF CUSHION	1	59	AA40A-054A	RUBBER JACKER	1
9	AA42A-005A	SPRING	1	60	B08-009800240	O-RING	1
10	AA42A-006A	SPRING WASHER	1	61	AA61A-009A	FEED PISTON	1
11	B08-041600300	O-RING	1	62	B08-020800240	O-RING	1
12	B08-056000300	O-RING	2	63	AA42A-023A	SPRING	1
13	AA42A-007B	ACTIVE VALVE	1	64	AA42A-022A	FEED PISTON STOP	1
14	B08-043000490	O-RING	1	65	AA42A-021A	SPRING COLLAR	1
15	AA61A-Y01A2	DRIVER	1	66	B03-05-0260-02	RETAINING RING	1
16	AA42A-010A	CYLINDER SEAL	1	67	B01-01-060400-02	SCREW	1
17	AA61A-002A	CYLINDER	1	68	AA40A-023A	SHUTOFF	1
18	B08-056800300	O-RING	1	69	AA40A-024A	SPRING	1
19	B08-056600570	O-RING	1	70	AA40A-054A	RUBBER JACKER	1
20	AA42A-045A	BUMPER II	1	71	AA42A-028A	CHECK PAWL	1
21	AA42A-044A	BUMPER I	1	72	AA40A-056A	SPRING	1
22	AA42A-008A	CYLINDER RING	1	73	B02-030120-02	ROLL PIN	1
23	B08-084400310	O-RING	1	74	AA42A-027A	STEP PIN	1
24	AA42A-013A	BODY	1	75	AA61A-003A	OPPRESSOR PLATE	1
25	B08-057000300	O-RING	1	76	AA42A-017A	STOPGAP	1
26	AA42A-014A	TAIL CAP	1	77	AA42A-018A	STRAIGHT PIN	1
27	AA06A-018A	AIR HOSE CONNECTOR	1	78	AA40A-048A	POST RETAINER	1
28	B07-01-060-04	LOCKNUT	1	79	AA42B-007A	MAGAZINE PIN	1
29	AA40A-056A	FLAT WASHER	2	80	AA61B-001A	MAGAZINE	1
31	B01-01-060400-02	SCREW	1	81	AA40A-054A	RUBBER JACKER	1
32	B02-030220-02	ROLL PIN	1	82	AA40A-046A	RECEIVER SPRING	1
33	B02-030320-02	ROLL PIN	1	83	AA61B-004A	MAGAZINE POST	1
34	B02-030240-02	ROLL PIN	3	84	AA40A-047A	TENSSION SPRING	1
35	B08-011800180	O-RING	1	85	AA61B-Y02A1	NAIL SUPPORT	1
36	AA42A-042A	VALVE	1	86	AA61B-002A	MAGAZINE COVER	1
37	B08-019600240	O-RING	1	87	AA40A-035A	DUST COVER HOOK	1
38	B08-005800190-10	O-RING	1	88	AA42A-020A	DUST COVER	1
39	AA17D-006A	VALVE PISTON	1	89	AA40A-050A	CUSHION	1
40	B08-006800190-02	O-RING	1	90	AA42A-016A	MUZZLE COVER	1
41	B08-008800190	O-RING	1	91	AA40A-056A	FLAT WASHER	1
42	AA40A-062A	SPRING	1	92	B07-01-060-02	LOCKNUT	1
43	B08-002500140-02	O-RING	2	93	B08-016000180	O-RING	1
44	AA17D-007A	THIMBLE	1	94	AA40A-039A	TRGGER COVER	1
45	AA42A-041A	THIMBLE COVER	1	95	GG08A	SHEATH	1
46	AA42A-043A	TRIGGER PIN	2				
47	AA40A-Y14A1	TRIGGER SET	1	101	AA42A-Y02A2	ACTIVE VALVE SET	
48	AA42A-019A	SAFETY GUIDE	1	102	AA61A-Y02A2	DRIVER SET	
49	AA42A-038A	SPRING	1	103	AA42A-Y14A1	VALVE SET	
50	AA61A-006A	SAFETY	1	104	AA17D-Y05A1	VALVE PISTON SET	
51	B08-004000150	O-RING	1	105	AA17D-Y06A1	THIMBLE SET	
52	B08-057000150	O-RING	1	106	AA40A-Y16A1	TRGGER COVER SET	