

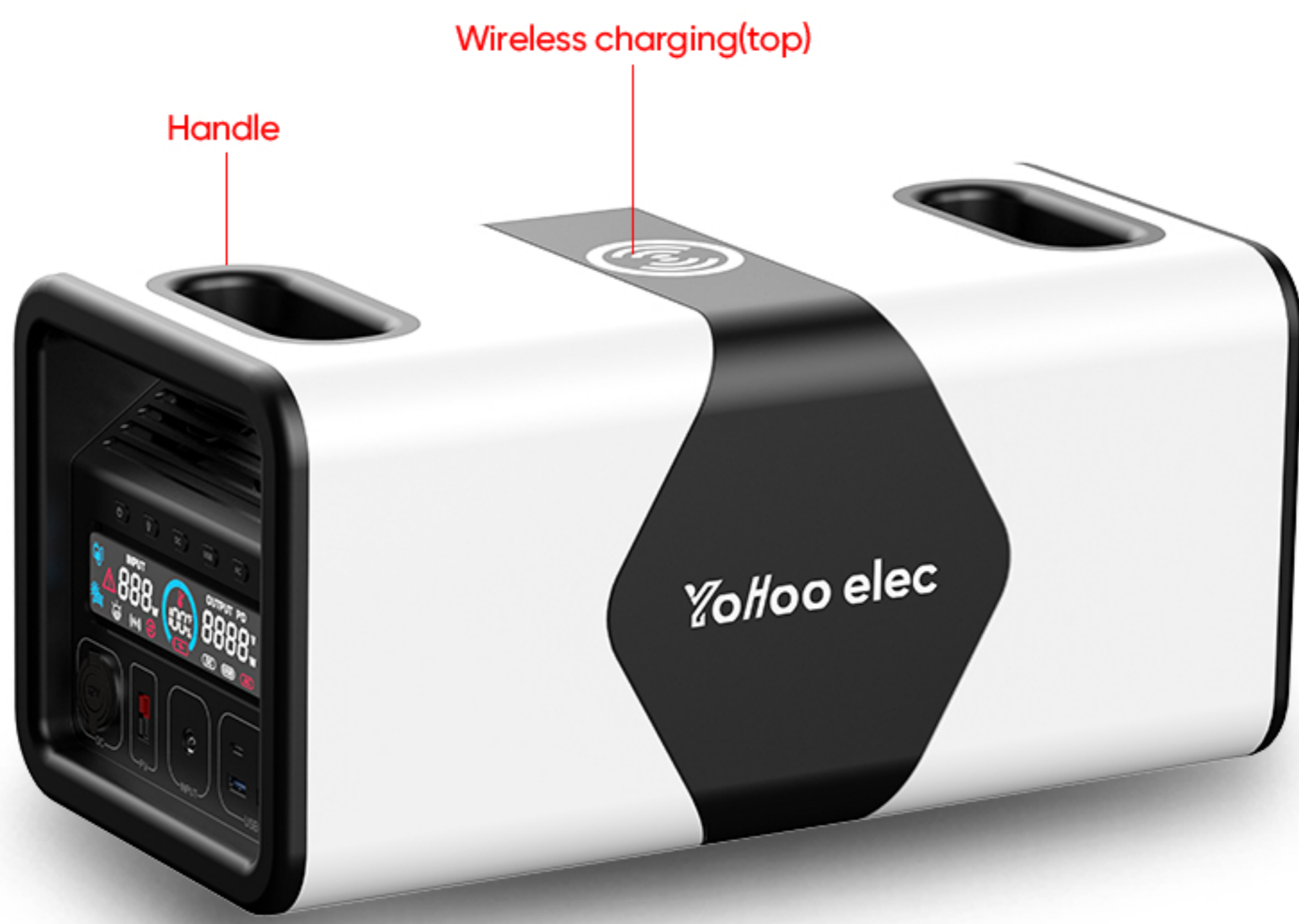
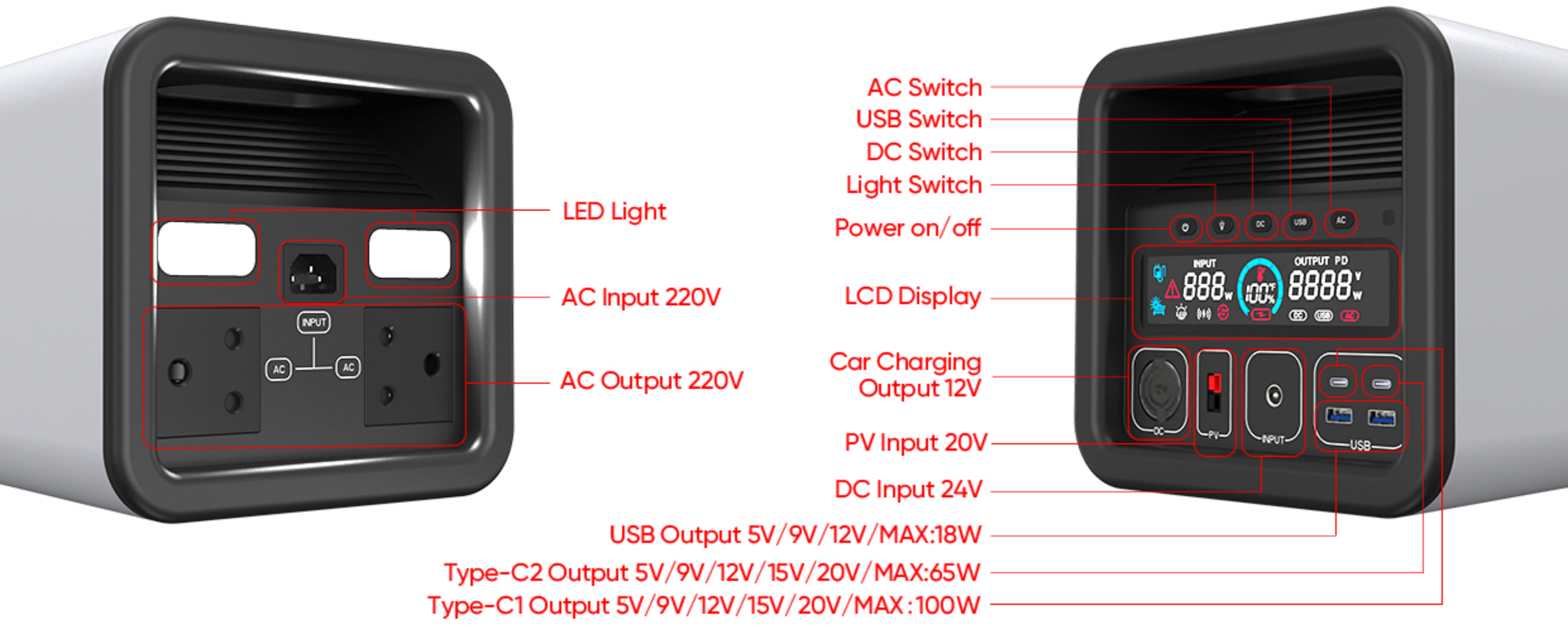
YoHoo elec

Manual

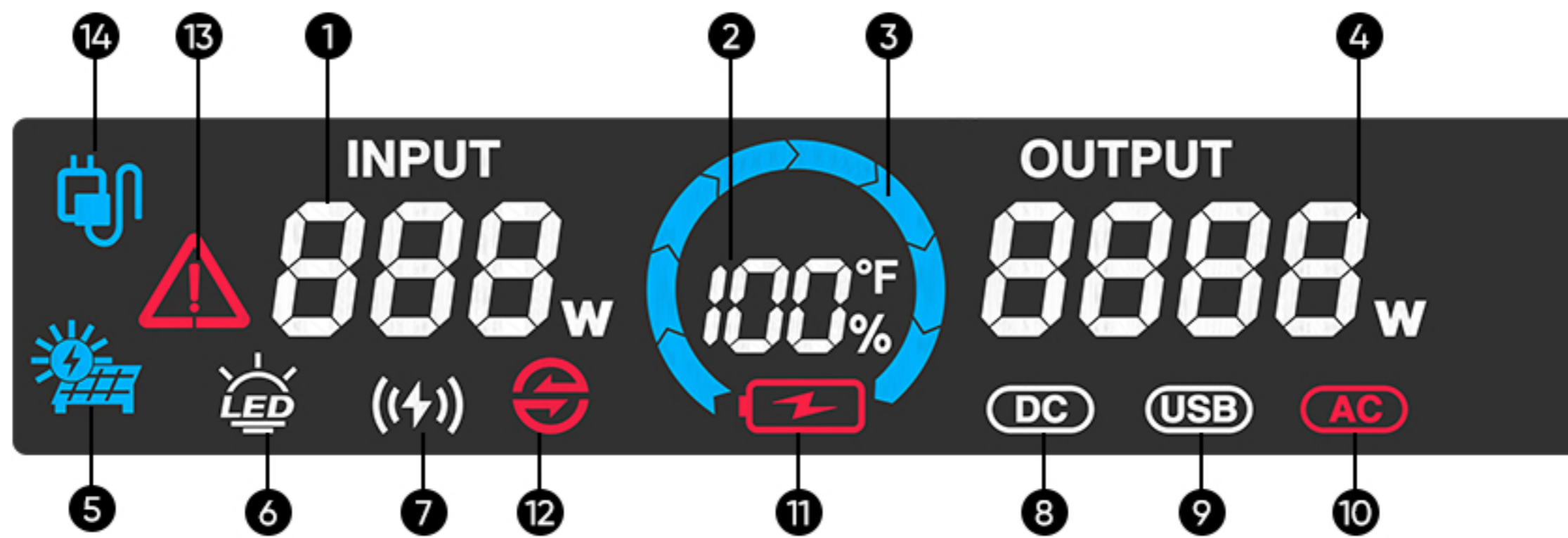


www.yohooelec.com

Product Appearance illustration



► Display Screen illustration

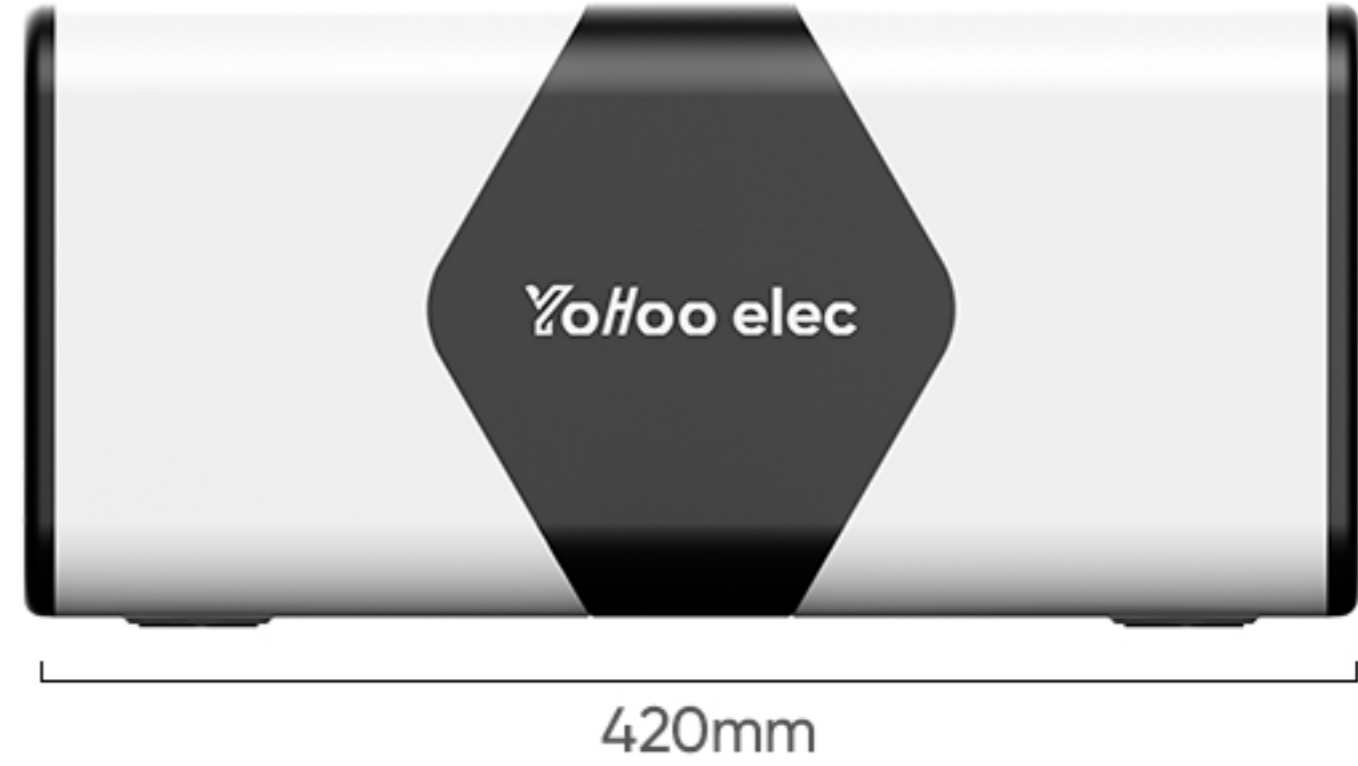


- ❶ Display the charging power when charging with AC, DC, or MPPT.
- ❷ Display the battery SOC (State of Charge) percentage.
- ❸ Display the battery capacity, with 100% showing as full, 50% showing as 4 bars, and so on, with the battery level below 10% flashing the icon ❾.
- ❹ Display the output power when the device is supplying power externally.
- ❺ Indicate the working status when using MPPT for charging, combined with ❶ to display the charging power.
- ❻ Display the functional status when the device's lighting or SOS signal is activated.
- ❼ Display the functional status when the device's wireless charging function is activated.
- ❽ Display the functional status when the device's DC power output is activated.
- ❾ Display the functional status when the device's USB power output is activated.
- ❿ Display the functional status when the device's AC power output is activated.
- ⓫ Display battery warnings, such as when the battery level is below 10% (combined with ❾), or when the battery temperature is too high (combined with ❸).
- ⓬ Display installment prepayment due reminders (used in conjunction with ❸).
- ⓭ Display warning symbols when the machine experiences faults, function unlocking, low voltage, etc.
- ⓮ Indicate the working status when charging with DC or AC, combined with ❶ to display the charging power.

Warnings and precautions

1. When the battery power is lower than 10%, the AC output cannot be started. During AC output, if the battery power is lower than 10%, the AC output will automatically turn off.
2. When the battery power is lower than 5%, the DC power supply function will be turned off. During DC output, if the battery power is lower than 5%, the DC output will automatically turn off.
3. The AC output function cannot be activated during AC charging.
4. Please keep this product out of the reach of children to ensure their safety.
5. Please do not disassemble this product without permission. Any unofficial disassembly will void the warranty.
6. Please use accessories that come with the device or recommended by customer service.
7. Please use this product in a well-ventilated, dry place. Avoid using the product below -20°C . Do not charge the product when the temperature is below 0°C .
8. Please keep this product away from flammable substances and high temperature environments.
9. When storing, please keep the battery power between 50% and 70% and place it in a ventilated and dry place.
10. When storing the product, please charge it at least once every three months.
11. Long-term storage temperature: In the first case, the temperature is $-20\sim 45^{\circ}\text{C} \leq 1$ month (20%~50% SOC), and in the second case, the temperature is $-20\sim 35^{\circ}\text{C} \leq 6$ months (20%~50% SOC). If the battery is stored for more than 6 months, it is recommended to fully charge it once, discharge it once, and then charge it to 50% SOC, otherwise the battery life may be shortened.
12. It is strictly prohibited to violently hammer or tilt this product.
13. To prevent electric shock, do not use damaged or defective cables as connectors.
14. Artificial short circuit is prohibited.

Technical Parameters *All the data above are collected through experiments.



Mode	YH-PPS1000
Battery energy	1120Wh
AC Output Nominal Voltage	220V±5% 50Hz
AC Output Nominal Power	1000W(instantaneous peak power 2000W)
Output TYPE-C1 Output	5V/3A,9V/3A,12V/3A,15V/3A,20V/5A,MAX:100W
Output TYPE-C2 Output	5V/3A,9V/3A,12V/3A,15V/3A,20V/3.25A,MAX:65W
Output USB-A Output	5V/3A,9V/2A,12V/1.5A 18W MAX
DC Car Charging Output	(12V±1.5V)/10A
AC Charging	MAX. Power 800W
DC Charging	24V/7A
PV Charging	20V/7A ,140W solar panel
Wireless charging	15W MAX
Charging ambient temperature	0°C~45°C
Discharging ambient temperature	-20°C~55°C
Dimensions	420X197X205mm
Net Weight	About 14kg

Packing List

Portable power station* 1; Manual* 1; AC power cord* 1

Troubleshooting

Problems	Causes	Solutions
Charging Failures	The indicator on the screen fails to light up.	Check if there is a bad connection between AC charging line and socket, make sure the socket is powered. If it cannot be solved, contact our after-sales service team.
	The indicator on the screen lights up, but still no charging.	Please remove the AC charging line and contact our after-sales service team.
	The ambient temperature is too low.	Please charge the device where the ambient temperature is greater than 0°C.
	Other causes.	Please contact our after-sales service team.
No Power to the Outlet	The poor connection between the device and the cable.	Keep the device and the cable in good connection. Please use the universal connectors.
	The circuit protection is activated owing to overload.	For high current DC output, please use a car cigarette lighter adapter cable to connect. For AC output, please make sure the power of the electrical equipment conforms to the specification of this device.
	The battery power of the device gets low.	Please recharge the device.
	The ambient temperature is too low.	Please use the device where the ambient temperature is greater than -10°C in case the low temperature protection is activated.
	The power drawn by the load is far more than what is allowed in the specification.	Please stop using the device.
	Other causes.	Please contact the after-sales service team.
The power is cut off when the device is discharging.	The battery power of the device gets low.	Please recharge the device.
	The power of the electrical equipment gradually exceeds what is allowed in the specification.	Please use the equipment after power derating or contact our after sales service team for device of larger power.
	The over-temperature protection is activated.	Please use the device after it cools down.
	The motor in the electrical equipment like electrical fan, hair dryer or hand drill is not soft motor.	If the equipment is adjustable, please start it after power de-rating.
	Short circuit of your electrical equipment.	Please stop using the equipment.
	Short circuit of this device.	Please contact the after-sales service team.
	Other causes.	Please contact the after-sales service team.

Methods of Charging



It takes about 1.5 hours to fully charge the device via AC.



It takes about 10 hours to get this device fully charged with 200W solar panel (Ideal situation).

Warranty

Warranty Terms

1. Please keep this warranty card properly for future service request.
2. Please do not damage the warranty sticker on the connecting part of the product casing.
3. During the warranty period, if the product itself has quality problems or malfunctions, the official after-sales personnel will verify that it is true. Repairs and replacement parts will be provided free of charge.
4. The company reserves the right to modify and interpret all content.

This warranty does not cover product problems related to the following

1. The product is damaged owing to failure to follow operation instructions or misuse.
2. The warranty sticker on the product is removed or unauthorized teardown of the product.
3. The product number has been changed or does not conform to this manual.
4. The product was placed in an extreme environment not for its reasonable use including immersion, shaking, high temperature, and corrosive environment, which led to evident damage of the product.
5. Product failure caused by external causes beyond our reasonable control including accidents and natural disasters.