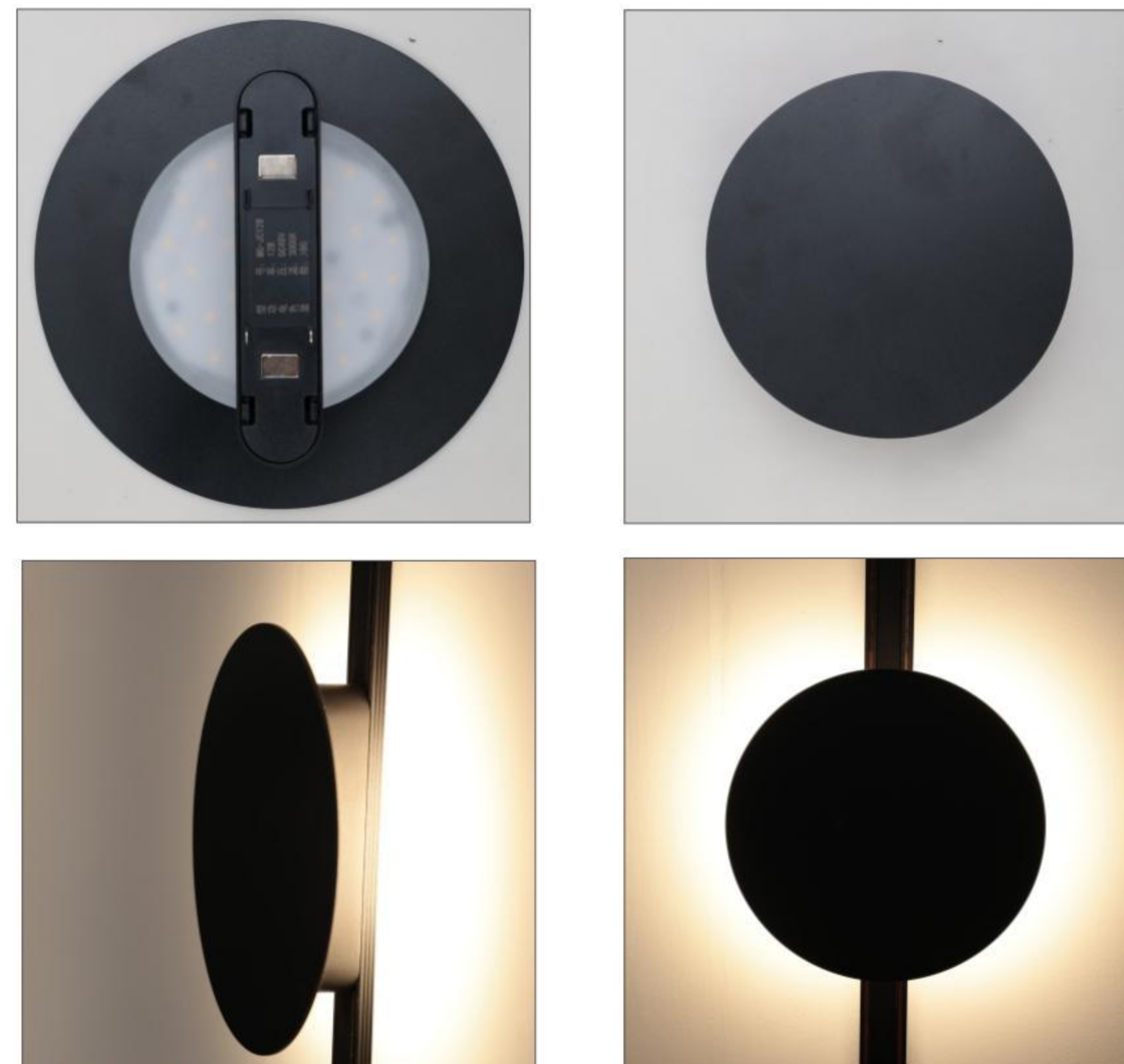


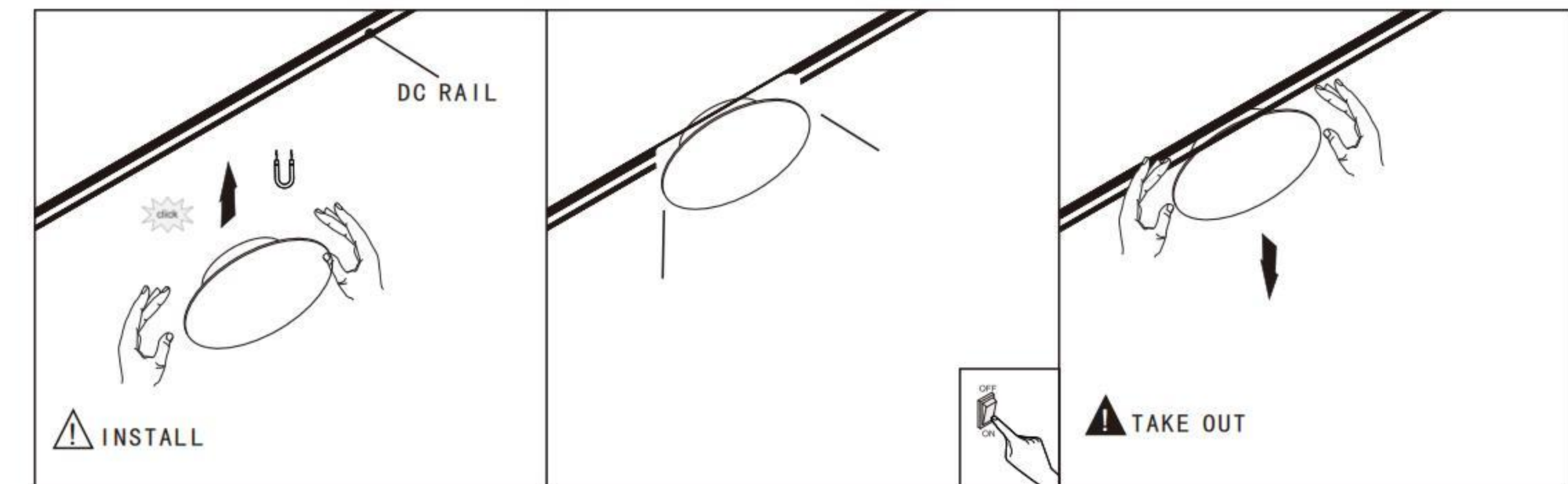


UTR-JC



UTR-JC SERIES

DC 48V	3000K Ra>90	ON/OFF	BK
	4000K Ra>90	0-10V Optional	WH
	6500K Ra>90	0-220V Optional	IP20
	UGR<6		
OSRAM	SAN AN	CREE	BRIDGELUX



TECHNICAL SPECIFICATIONS

Model No:	UTR-JC
Power :	12W
Colour Temperature :	3000K/4000K/6500K
Colour Rendering Index :	CRI>80
Housing material :	Alumium + PC
Input parameter :	DC48V
Light source type :	SMD

MODEL : UTR-JC12W

