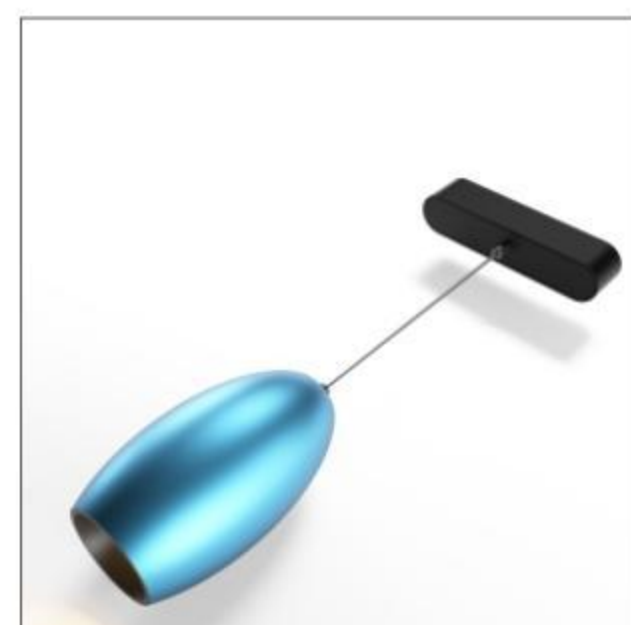
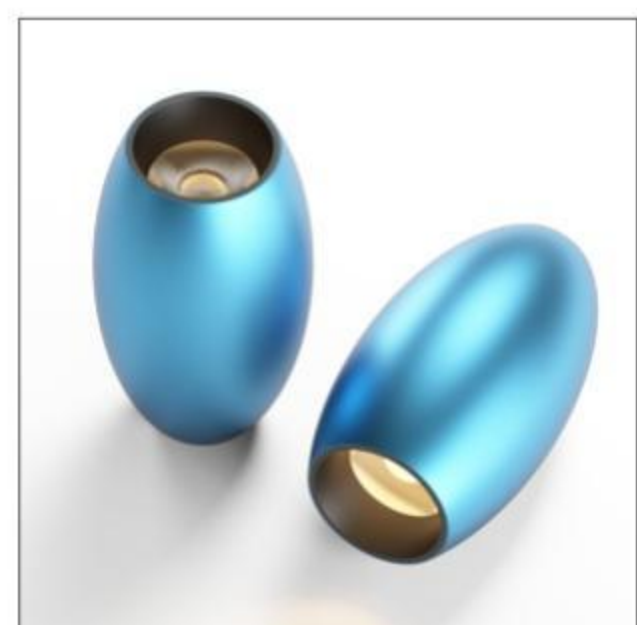
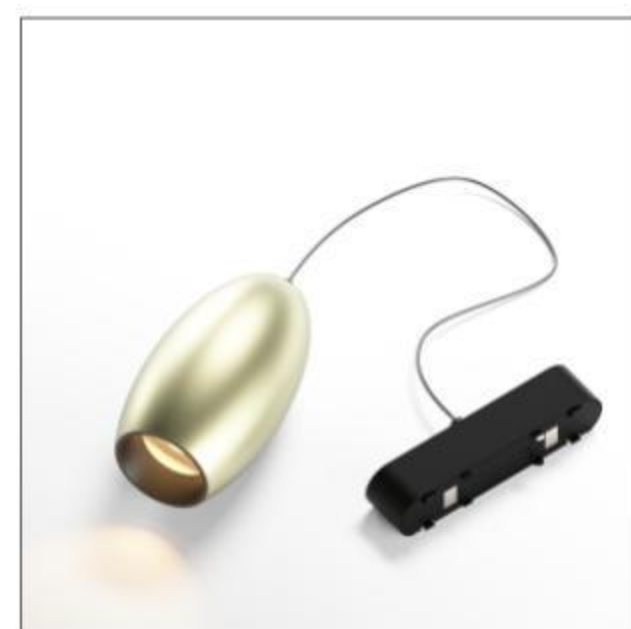




## UTR-CC

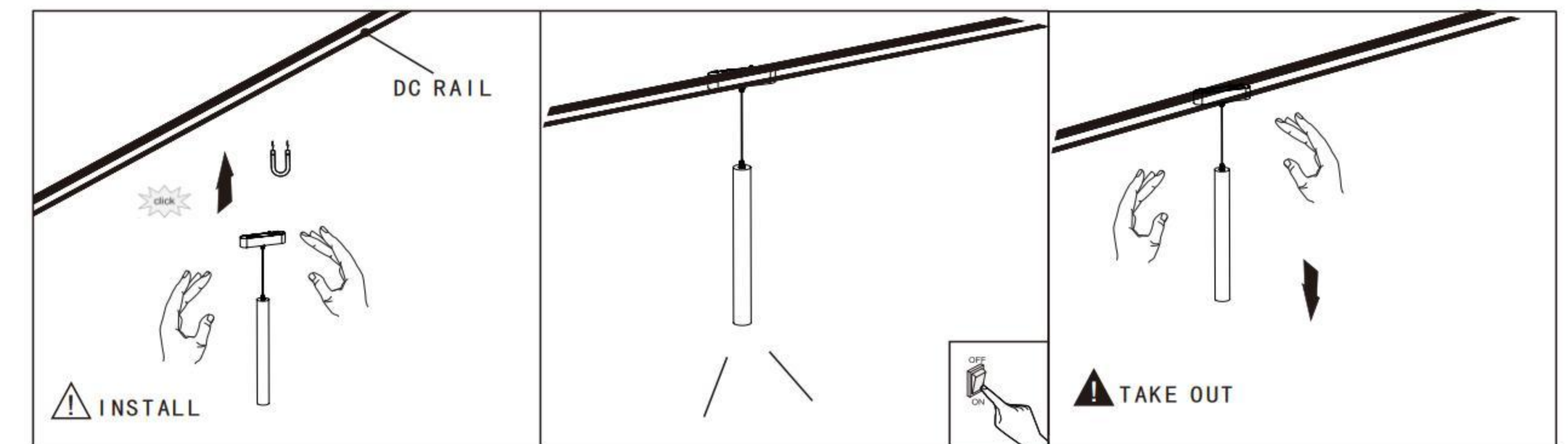


### UTR-CC SERIES



	24°		36°			
6W		h(m) Ea(lx) D(cm)		h(m) Ea(lx) D(cm)		
		1 1983 38.03		1 810.5 53.84		
		2 495.7 76.06		2 202.6 107.68		
		3 220.3 114.09		3 90.06 161.53		
		4 123.9 152.12		4 50.66 215.37		
		5 79.31 190.15		5 32.42 269.21		
12W		h(m) Ea(lx) D(cm)		h(m) Ea(lx) D(cm)		
		1 3114 49.76		1 6086 47.49		
		2 778.6 99.52		2 1522 94.98		
		3 346.0 149.29		3 676.2 142.46		
		4 194.6 199.05		4 380.4 189.95		
		5 124.6 248.81		5 243.4 237.44		

DC 48V	3000K Ra≥90	ON/OFF	BK
	4000K Ra≥90	0-10V Optional	WH
	6500K Ra≥90	0-220V Optional	IP20
	UGR≤6		
OSRAM	SAN AN	CREE	BRIDGELUX



### TECHNICAL SPECIFICATIONS

<b>Model No:</b>	UTR-CC
<b>Power :</b>	10W
<b>Colour Temperature :</b>	3000K/4000K/6500K
<b>Colour Rendering Index :</b>	CRI>80
<b>Housing material :</b>	Alumium + PC
<b>Input parameter :</b>	DC48V
<b>Light source type :</b>	SMD

MODEL : UTR-CC10W

