



**MG-DD**



MG-DD SERIES

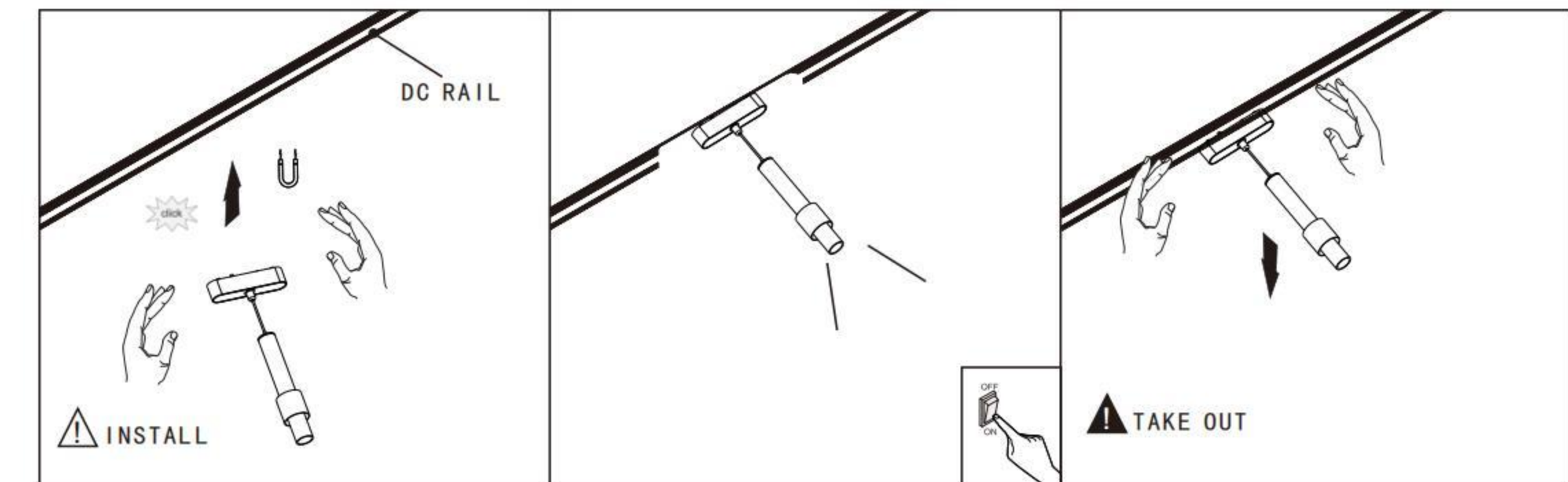


24°				36°			
h(m)	Ea(lx)	D(cm)		h(m)	Ea(lx)	D(cm)	
1	1983	38.03		1	810.5	53.84	
2	495.7	76.06		2	202.6	107.68	
3	220.3	114.09		3	90.06	161.53	
4	123.9	152.12		4	50.66	215.37	
5	79.31	190.15		5	32.42	269.21	

24°				36°			
h(m)	Ea(lx)	D(cm)		h(m)	Ea(lx)	D(cm)	
1	3114	49.76		1	6086	47.49	
2	778.6	99.52		2	1522	94.98	
3	346.0	149.29		3	676.2	142.46	
4	194.6	199.05		4	380.4	189.95	
5	124.6	248.81		5	243.4	237.44	

DC 48V	3000K Ra>90	ON/OFF	BK
	4000K Ra>90	0-10V Optional	WH
	6500K Ra>90	0-220V Optional	IP20
	UGR<6		
OSRAM	SAN AN	CREE	BRIDGELUX



**TECHNICAL SPECIFICATIONS**

<b>Model No:</b>	MG-DD
<b>Power :</b>	8W
<b>Colour Temperature :</b>	3000K/4000K/6500K
<b>Colour Rendering Index :</b>	CRI>90
<b>Housing material :</b>	Alumium + PC
<b>Input parameter :</b>	DC48V
<b>Light source type :</b>	COB

**MODEL : MG-DD-8W**

